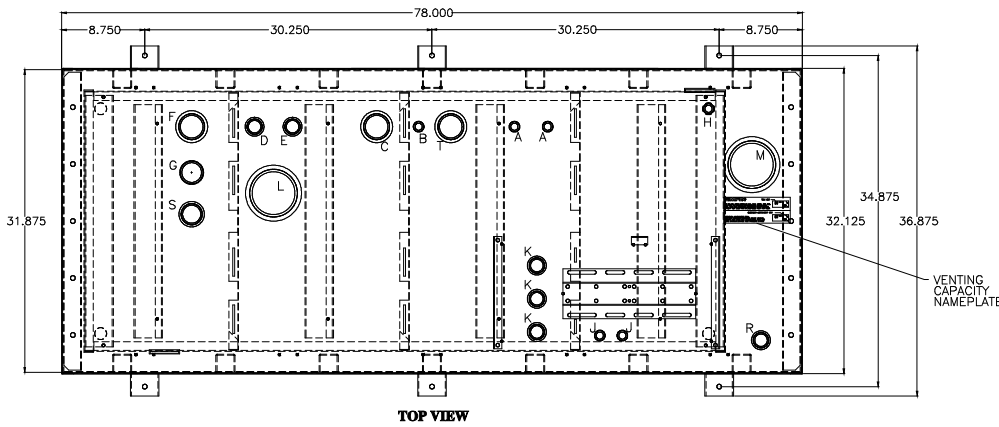


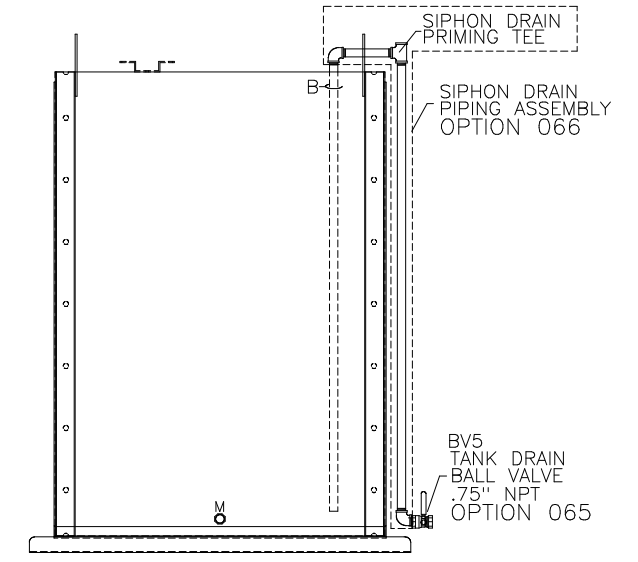
PORT	DESCRIPTION	SIZE
A	ENGINE SUPPLY DROP TUBE	0.75" NPT, MALE
B	SIPHON DRAIN DROP TUBE	0.75" NPT, MALE
C	OVERFLOW PORT	2.00" NPT, FEMALE
D	ENGINE RETURN PORT	1.00" NPT, FEMALE
E	EXTRA PIPE FLANGE	1.00" NPT, FEMALE
F	TANK VENT PORT	2.00" NPT, FEMALE
G	MANUAL FILL PORT	2.00" NPT, MALE
H	HAND PUMP DROP TUBE	0.75" NPT, MALE
J	PUMP DROP TUBE	0.75" NPT, MALE
K	SST FLOATSWITCH	1.00" NPT, FEMALE
L	PRIMARY EMERGENCY TANK VENT	4.00" NPT, FEMALE
M	SECONDARY EMERGENCY TANK VENT	4.00" NPT, FEMALE
R	LEAK SENSOR PORT	1.00" NPT, FEMALE
S	SIGHT GAUGE MTG. PORT	1.50" NPT, FEMALE
T	EXTRA PORT	2.00" NPT, FEMALE
U	CONTAINMENT DRAIN	0.375" NPT, FEMALE

- NOTES:**
- 1) CONSTRUCTION: 12 GA. H.R.S.
 - 2) LISTING: UL 142
 - 3) RATING: ATMOSPHERIC TANK TESTED TO 3 PSI
 - 4) FINISH: TANK POWDER COATED BONE WHITE
EQUIPMENT COVER POWDER COATED BONE WHITE
 - 5) DUE TO SYSTEM COMPLEXITY, SOME COMPONENTS MAY NOT BE VISIBLE IN ALL VIEWS
 - 6) ALL DIMENSIONS ±.125"



TOP VIEW

- OPTIONS INSTALLED**
- X002-DELETION OF STD PUMP & MOTOR
 - 015-MANUAL HAND PUMP
 - 025-MANUAL FILL PIPE W/LOCKABLE CAP
 - 060-FUEL STRAINER, Y-TYPE, 0.75" NPT., 40 MESH
 - 064-EMERGENCY VENT, 2.5 P.S.I., 4.00" NPT.
 - 065-TANK DRAIN BALL VALVE
 - 066-SIPHON DRAIN PIPING ASSEMBLY
 - 070-PRIMING TEE & CHECK VALVE ASSEMBLY
 - 080-SOLENOID VALVE, N.C. 115VAC
 - 087-MANUAL SHUT-OFF BALL VALVE .75"NPT
 - 125-INLET DROP TUBE, 1.00" NPT.
 - 130-RETURN PORT, 2.00" NPT
 - 191-FLOATSWITCH IN RUPTURE BASIN
 - 192-RUPTURE BASIN DRAIN BALL VALVE
 - 215-MECHANICAL LEVEL GAUGE
 - 270-POWER AVAILABLE PILOT LIGHT
 - 280-PUMP RUN-OFF-AUTO SWITCH
 - 311-LOW FUEL LEVEL ALARM
 - 312-HIGH FUEL LEVEL ALARM
 - 325-HIGH FUEL LEVEL PUMP STOP
 - 333-CRITICAL LOW FUEL ALARM
 - 340-PUMP RUNNING AMBER LIGHT
 - 345-DUPLEX PUMP CONTROLLER
 - 390-RETURN PUMP & CONTROLLER
 - 400-FILL PUMP, 7 G.P.M.
 - 721-FILL PUMP/MOTOR, 0.50 H.P., 460VAC,3Ø,60HZ
 - 400-RETURN PUMP, 7 G.P.M.
 - 721-RETURN PUMP/MOTOR, 0.50 H.P., 460VAC,3Ø,60HZ
 - HIGH TOP USED W/ SINGLE PUMP 3/4 H.P. OR DUPLEX PUMPS/MOTORS
 - TC-25 DIGITAL LEVEL TRANSDUCER WITH METER

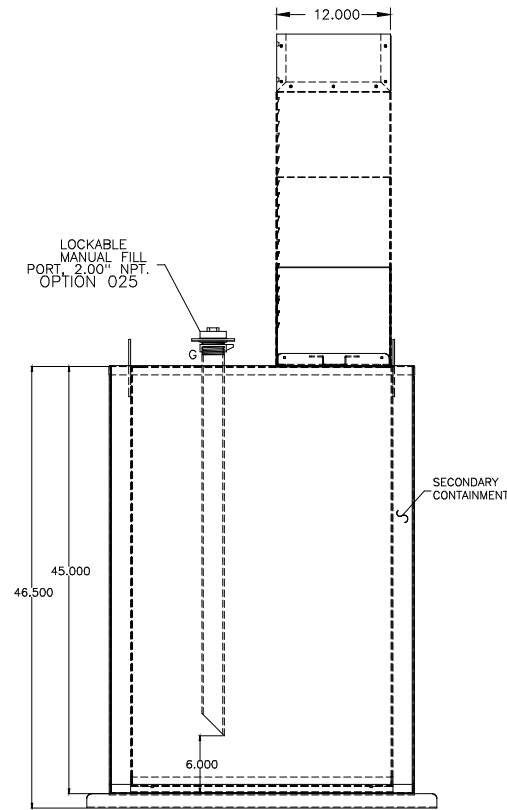


SIPHON DRAIN DETAIL

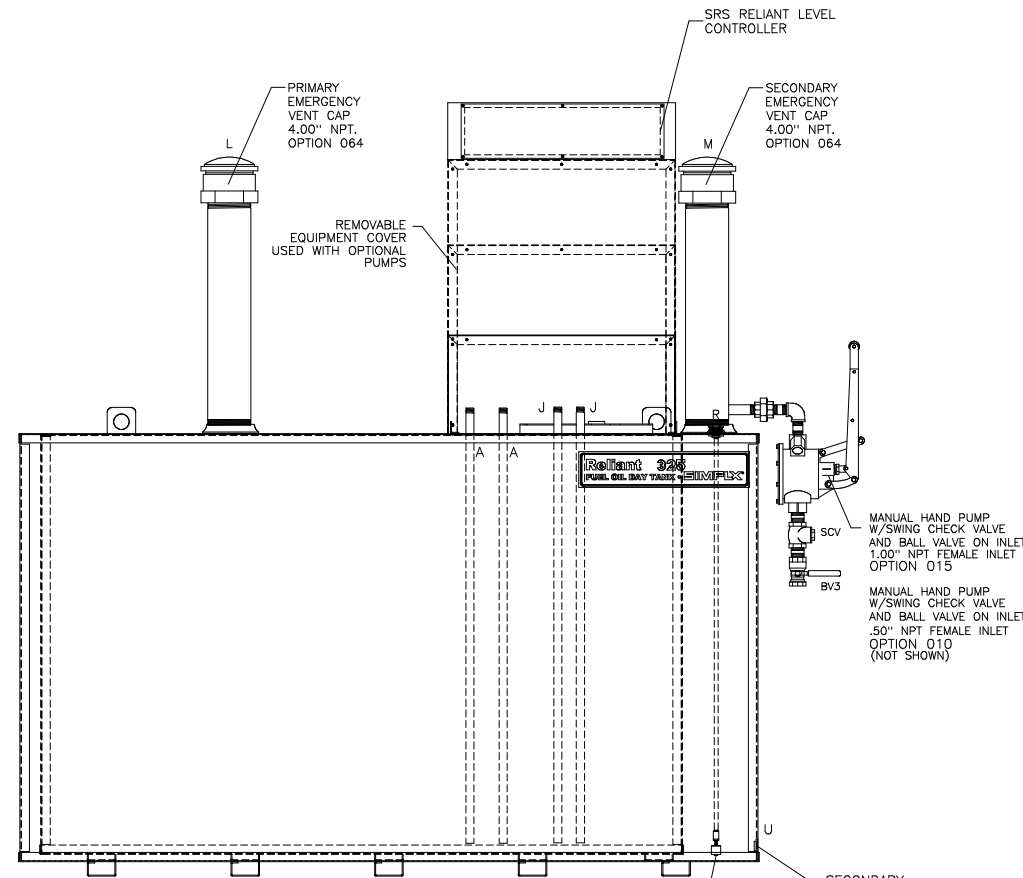
DAY TANK SHOWN WITH STANDARD CONTROL SECTION AND OPTIONAL DUPLEX PUMP/LARGE PUMP SECTION SEE TANK HEIGHT DETAIL.

OPTIONS SHIPPED LOOSE

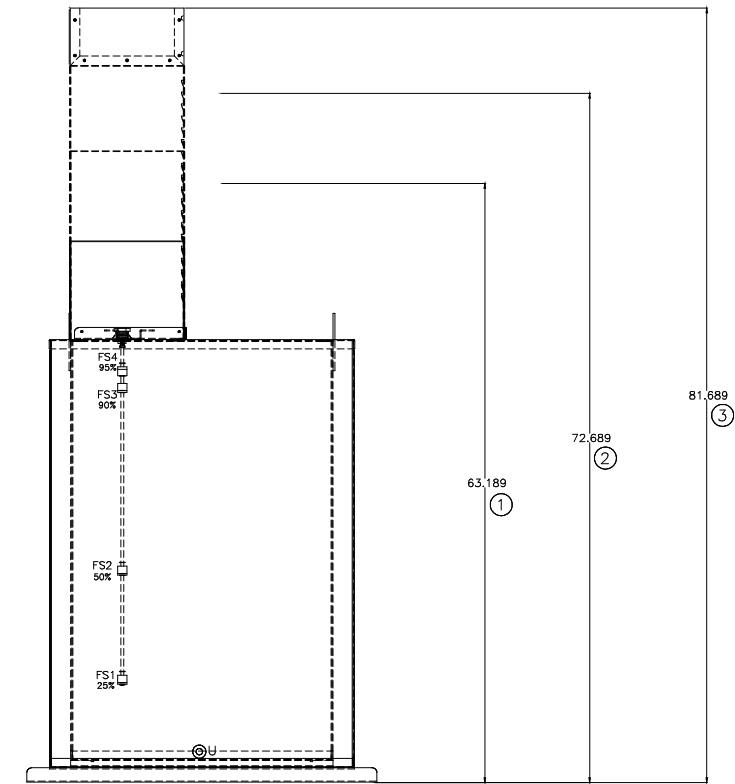
- 061-FUEL STRAINER, Y-TYPE, 1.0" NPT, 40 MESH
- 063-VENT CAP
- 087-MANUAL SHUT-OFF BALL VALVE .50"NPT
- 088-MANUAL SHUT-OFF BALL VALVE 1.00"NPT
- 090-FOOT VALVE 1.00" NPT
- 093-FUSIBLE LINK VALVE 1.50" NPT
- 110-RELOCATION OF STD PUMP & MOTOR
- 377-ANTI-SIPHON SOLENOID VALVE, N.O. 120VAC



L.H. VIEW



FRONT VIEW



R.H. VIEW

DISK S/N: 9066

THE INFORMATION HEREON IS THE PROPERTY OF SIMPLX, INC., AND/OR ITS SUBSIDIARIES. WITHOUT WRITTEN PERMISSION ANY COPYING, TRANSMITTAL TO OTHERS AND USE EXCEPT THAT FOR WHICH IT IS LOANED IS PROHIBITED.
© 2008 SIMPLX, INC. ALL RIGHTS RESERVED

SIMPLX		SPRINGFIELD, ILLINOIS	
SCALE : ~	APPROVED BY :	DRAWN BY : DLC	
DATE : 07/16/08		REVISED :	
FUEL OIL DAY TANK		SRS 325 RELIANT SECONDARY CONTAINMENT TANK	
CAPACITY 325 GALLONS		OPT:XXX	
W.O.# STANDARD		DRAWING NUMBER 181651	