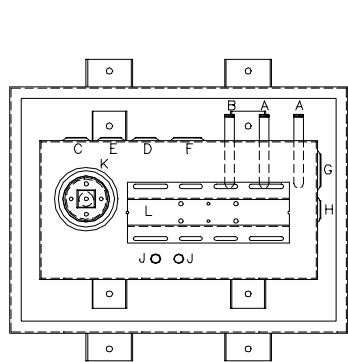


TANK FITTING SCHEDULE

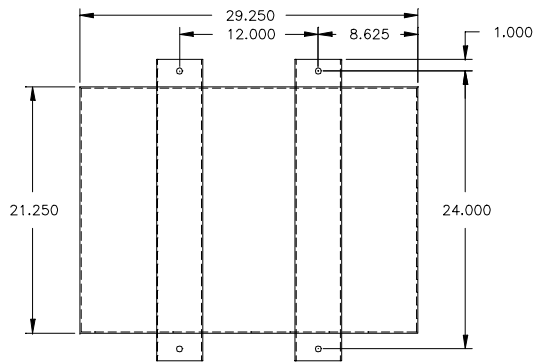
PORT	DESCRIPTION	SIZE
A	ENGINE SUPPLY DROP TUBE	0.50" NPT, MALE
B	SIPHON DRAIN DROP TUBE	0.50" NPT, MALE
C	OVERFLOW PORT	1.00" NPT, FEMALE
D	ENGINE RETURN PORT	1.00" NPT, FEMALE
E	EXTRA PIPE FLANGE	1.00" NPT, FEMALE
F	TANK VENT PORT	1.50" NPT, FEMALE
G	MANUAL FILL PORT	2.00" NPT, FEMALE
H	HAND PUMP MOUNTING PORT	0.75" NPT, FEMALE
J	PUMP CONNECTION TO TANK DROP TUBE	0.50" NPT, MALE
K	FLOATSWITCH MTG/INSPECTION PORT	3.50" NPT, FEMALE
L	RUPTURE BASIN DRAIN	.375" NPT, FEMALE
M	PUMP MOTOR MOUNTING BRACKET	

PUMP INLET

PUMP	GPM	INLET SIZE
STANDARD	2 GPM	.50" NPT INLET
OPTION 400	7 GPM	.75" NPT INLET
OPTION 410	10 GPM	.75" NPT INLET
OPTION 415	17 GPM	.75" NPT INLET
OPTION 417	25 GPM	1.25" NPT INLET
OPTION 420	3 GPM	.50" NPT INLET
OPTION 422	5 GPM	.50" NPT INLET
OPTION 424	11 GPM	1.00" NPT INLET
OPTION 426	13 GPM	1.25" NPT INLET
OPTION 428	28 GPM	1.50" NPT INLET



TANK FITTINGS TOP VIEW

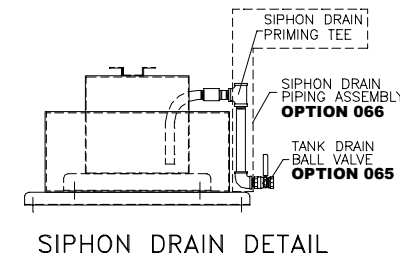


TANK MOUNTING DETAIL

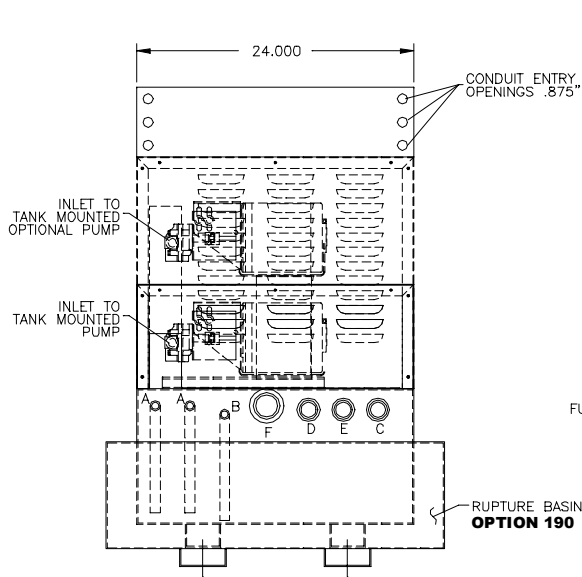
DAY TANK SHOWN WITH STANDARD CONTROL SECTION AND OPTIONAL DUPLEX PUMP/LARGE PUMP SECTION SEE TANK HEIGHT DETAIL BELOW.

DAY TANK HEIGHT

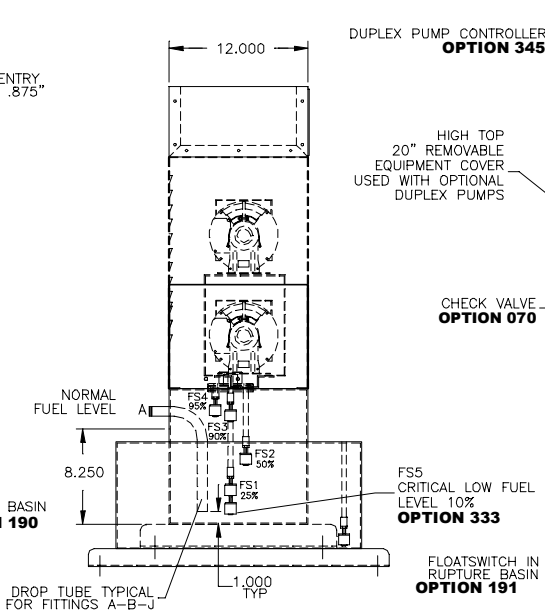
- ① WITHOUT ON-BOARD PUMP
- ② WITH SINGLE PUMP 1/3 & 1/2 H.P.
- ③ WITH SINGLE PUMP 3/4 & 1 H.P. OR DUPLEX PUMPS



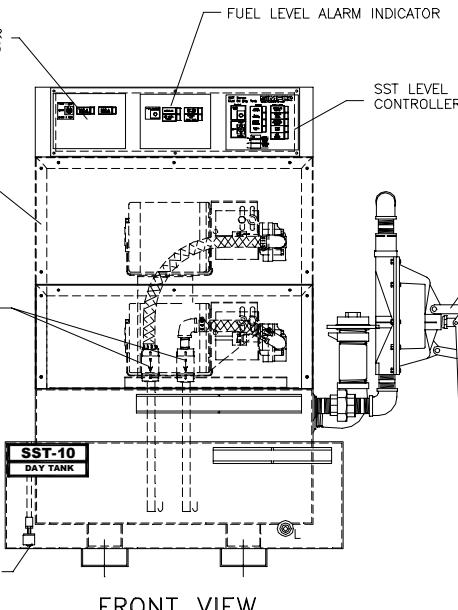
SIPHON DRAIN DETAIL



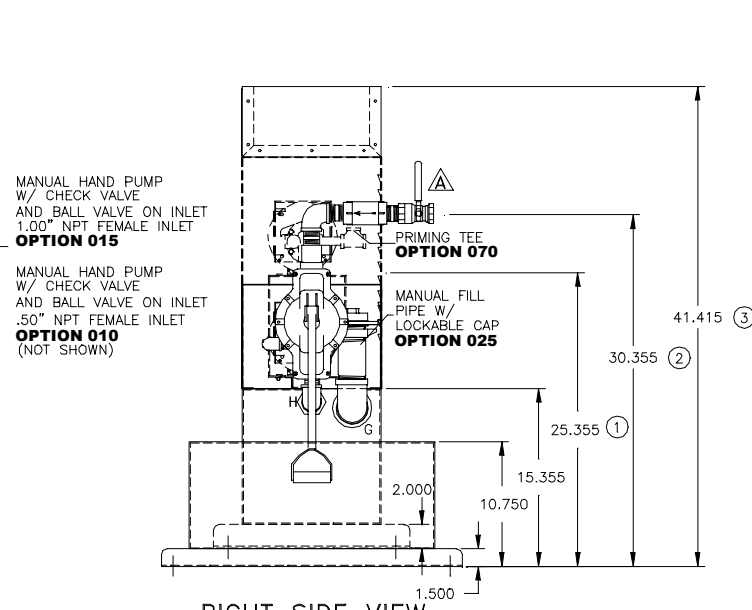
REAR VIEW



LEFT SIDE VIEW



FRONT VIEW



RIGHT SIDE VIEW

NOTES:

- 1) CONSTRUCTION: 12 GA HRS
- 2) LISTING: UL 142
- 3) RATING: ATMOSPHERIC TANK TESTED TO 5 PSI
- 4) FINISH: TANK PRIMED AND FINISH PAINTED ASA 61 LIGHT GRAY RUPTURE BASIN PRIMED AND FINISH PAINTED ASA 61 LIGHT GRAY EQUIPMENT COVER PRIMED AND FINISH PAINTED SIMPLEX BLUE
- 5) DUE TO SYSTEM COMPLEXITY, SOME COMPONENTS MAY NOT BE VISIBLE IN ALL VIEWS
- 6) ALL DIMENSIONS ±.125"
- 7) TANK FITTINGS A-L ARE STANDARD ON ALL TANKS

OPTIONS INSTALLED	OPTIONS INSTALLED	OPTIONS SHIPPED LOOSE
<input type="checkbox"/> X002-DELETION OF STD PUMP & MOTOR	<input type="checkbox"/> 191-FLOATSWITCH IN RUPTURE BASIN	<input type="checkbox"/> 060- FUEL STRAINER, Y-TYPE, .75" NPT., 40 MESH
<input type="checkbox"/> 010-MANUAL HAND PUMP	<input type="checkbox"/> 192-RUPTURE BASIN DRAIN BALL VALVE	<input type="checkbox"/> 061- FUEL STRAINER, Y-TYPE, 1.0" NPT., 40 MESH
<input type="checkbox"/> 015-MANUAL HAND PUMP	<input type="checkbox"/> 195-RUPTURE BASIN SCREEN COVER	<input type="checkbox"/> 063- VENT CAP
<input type="checkbox"/> 025-MANUAL FILL PIPE W/LOCKABLE CAP	<input type="checkbox"/> 261-CONTROL POWER ON-OFF CIRCUIT BREAKER	<input type="checkbox"/> 087- MANUAL SHUT-OFF BALL VALVE .50"NPT
<input type="checkbox"/> 040-WALL MOUNTING BRACKETS	<input type="checkbox"/> 333-CRITICAL LOW FUEL LEVEL 10%	<input type="checkbox"/> 087- MANUAL SHUT-OFF BALL VALVE .75"NPT
<input type="checkbox"/> 065-TANK DRAIN BALL VALVE	<input type="checkbox"/> 345-DUPLEX PUMP CONTROLLER	<input type="checkbox"/> 088- MANUAL SHUT-OFF BALL VALVE 1.00"NPT
<input type="checkbox"/> 066-SIPHON DRAIN PIPING ASSEMBLY	<input type="checkbox"/> 390-OVERFLOW RETURN PUMP & CONTROLLER	<input type="checkbox"/> 090- FOOT VALVE 1.00" NPT
<input type="checkbox"/> 070-PRIMING TEE & CHECK VALVE ASSEMBLY	<input type="checkbox"/> HIGH TOP USED W/ SINGLE PUMP 3/4 H.P. OR DUPLEX PUMPS/MOTORS	<input type="checkbox"/> 093- FUSIBLE LINK VALVE 1.50" NPT
<input type="checkbox"/> 080-SOLENOID VALVE, N.C. 120VAC		<input type="checkbox"/> 110-RELOCATION OF STD PUMP & MOTOR
<input type="checkbox"/> 120-EXTRA 1.00" PIPE CONNECTION		
<input type="checkbox"/> 125-EXTRA ENGINE SUCTION STANDPIPE		

THE INFORMATION HEREON IS THE PROPERTY OF SIMPLEX, INC. AND/OR ITS SUBSIDIARIES. WITHOUT WRITTEN PERMISSION ANY COPYING, TRANSMITTAL TO OTHERS AND USE EXCEPT THAT FOR WHICH IT IS LOANED IS PROHIBITED.
© 1999 SIMPLEX, INC. ALL RIGHTS RESERVED

DISK S/N: 9054

A	ADDED BALL VALVE	REVISED BY: JDS	DATE: 03/22/99
SIMPLX		SPRINGFIELD, ILLINOIS	
SCALE: ~	APPROVED BY:	DRAWN BY: JDS	
DATE: 09/14/96	REVISED:		
FUEL OIL DAY TANK		SST 10-C/190	
CAPACITY: 10 GALLONS		OPT:XXX	
W.O. #XXXX-XX-XX		DRAWING NUMBER 8BD79004A	