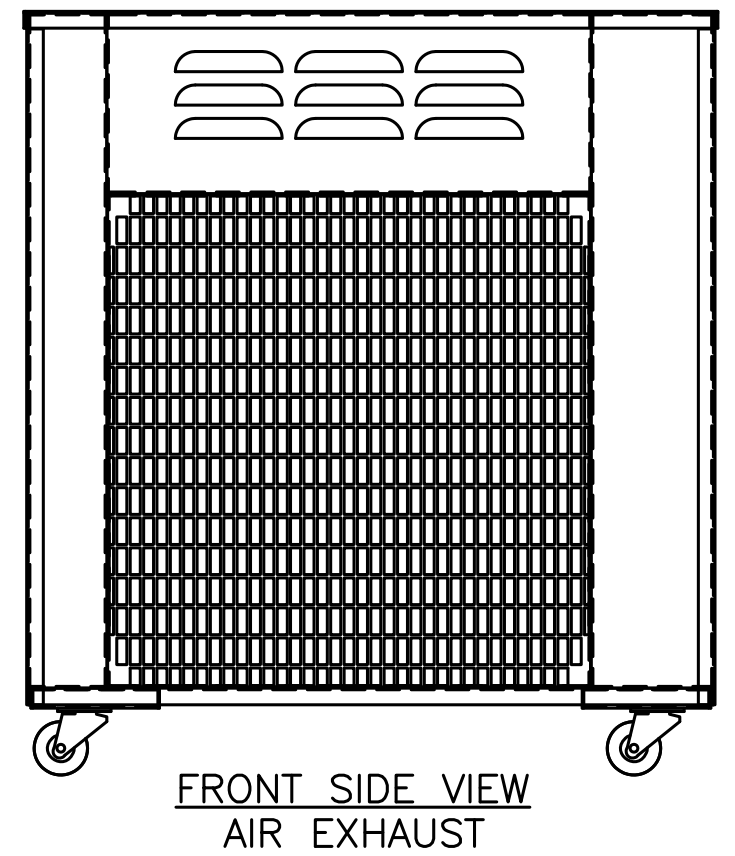
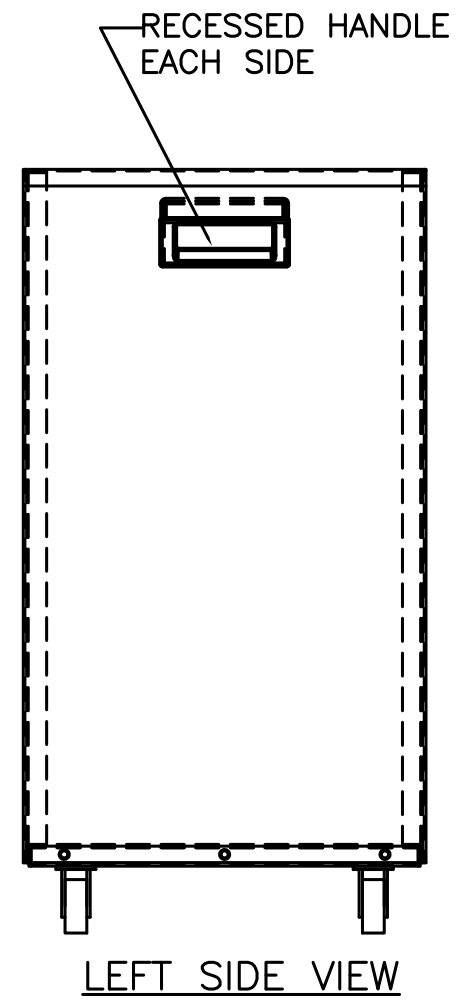
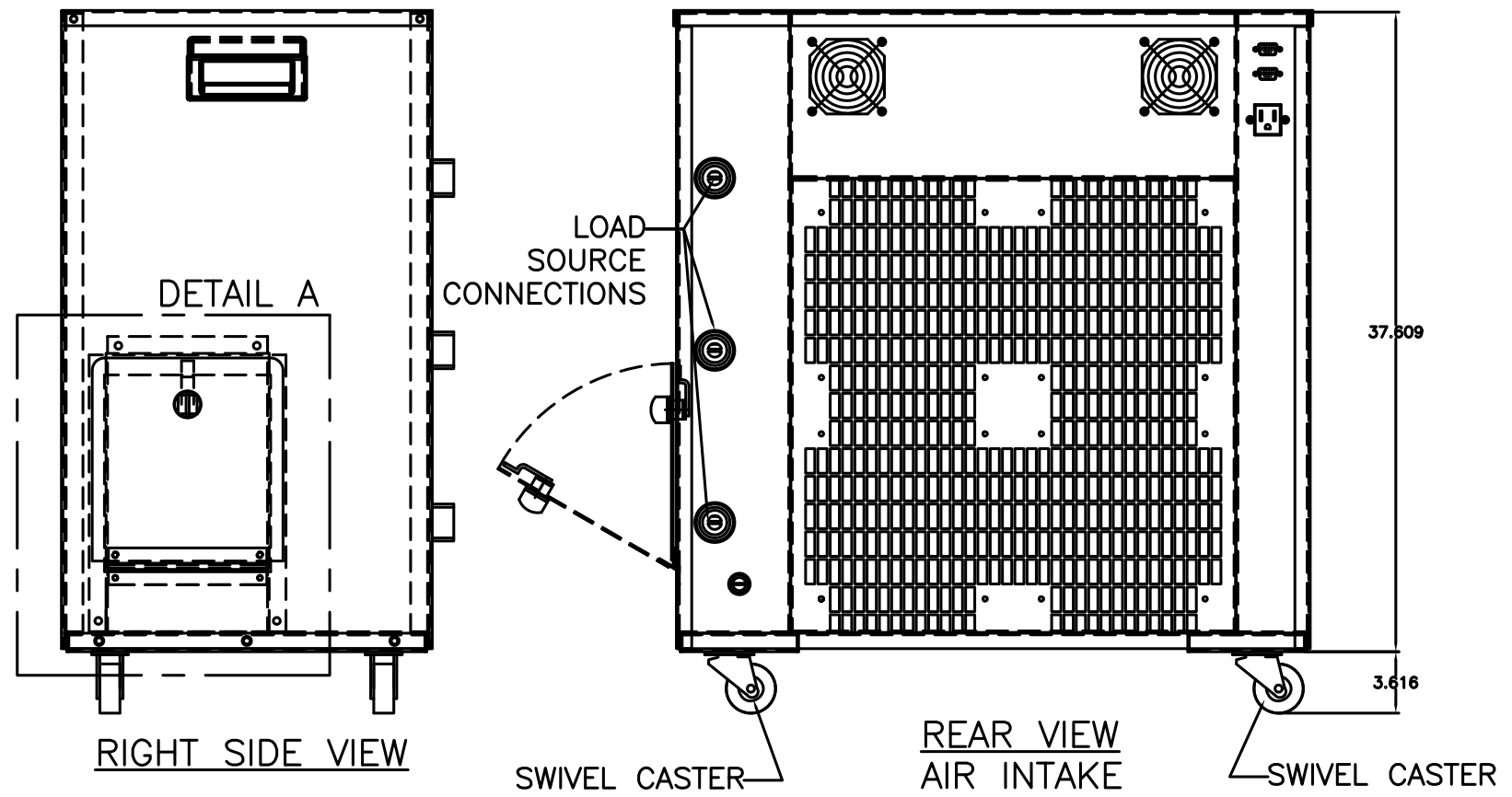


- NOTES: 1. CONSTRUCTION: ALUMINUM.
 2. PAINT: POWDER COAT GRAPHITE
 3. EXHAUST & INTAKE SCREEN UNPAINTED.



THE INFORMATION HEREON IS THE PROPERTY OF SIMPLEX, INC., AND/OR ITS SUBSIDIARIES. WITHOUT WRITTEN PERMISSION ANY COPYING, TRANSMITTAL TO OTHERS AND USE EXCEPT THAT FOR WHICH IT IS LOANED IS PROHIBITED. DESIGN SUBJECT TO CHANGE WITHOUT NOTICE.
 ©2010 SIMPLEX, INC. ALL RIGHTS RESERVED.

SIMPLEX		SPRINGFIELD, ILLINOIS
SCALE :	APPROVED BY :	DRAWN BY : RER
DATE : 08-02-10		REVISED :
POWERSTAR-100 LOAD BANK PICTORIAL		
STANDARD		DRAWING NUMBER 211930