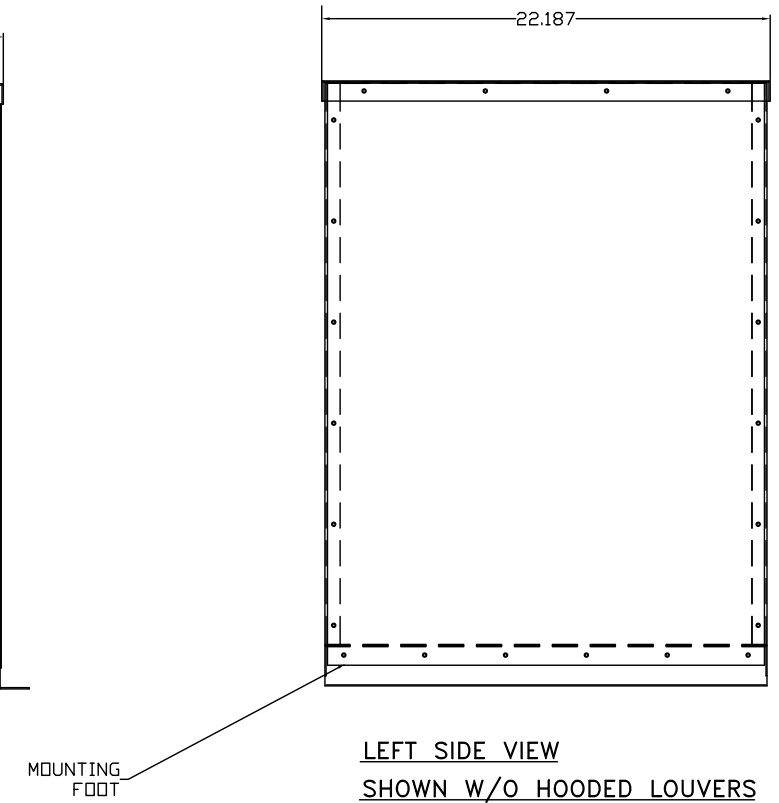
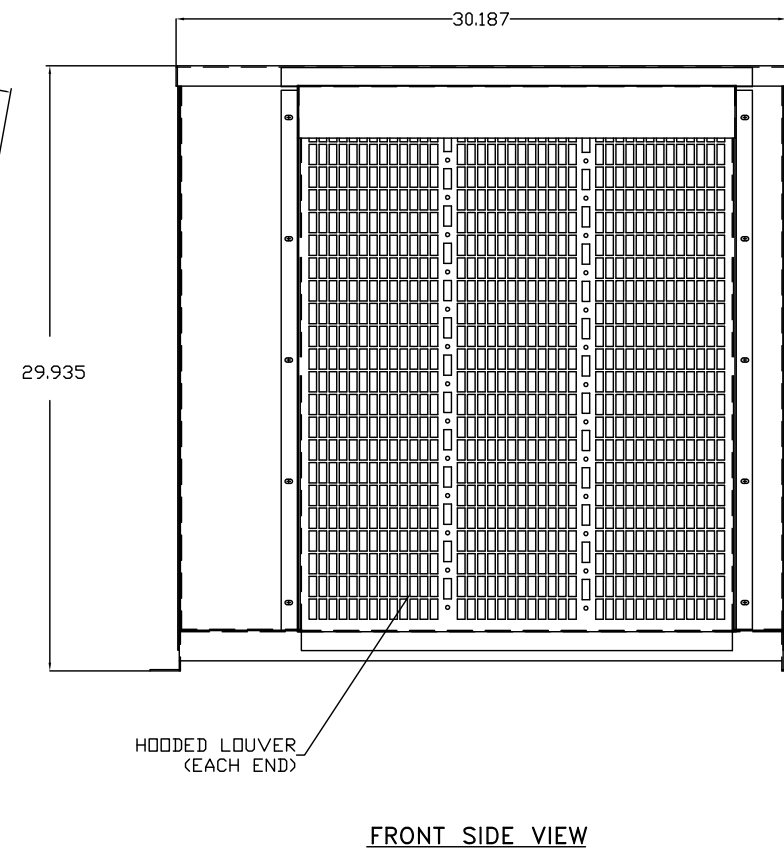
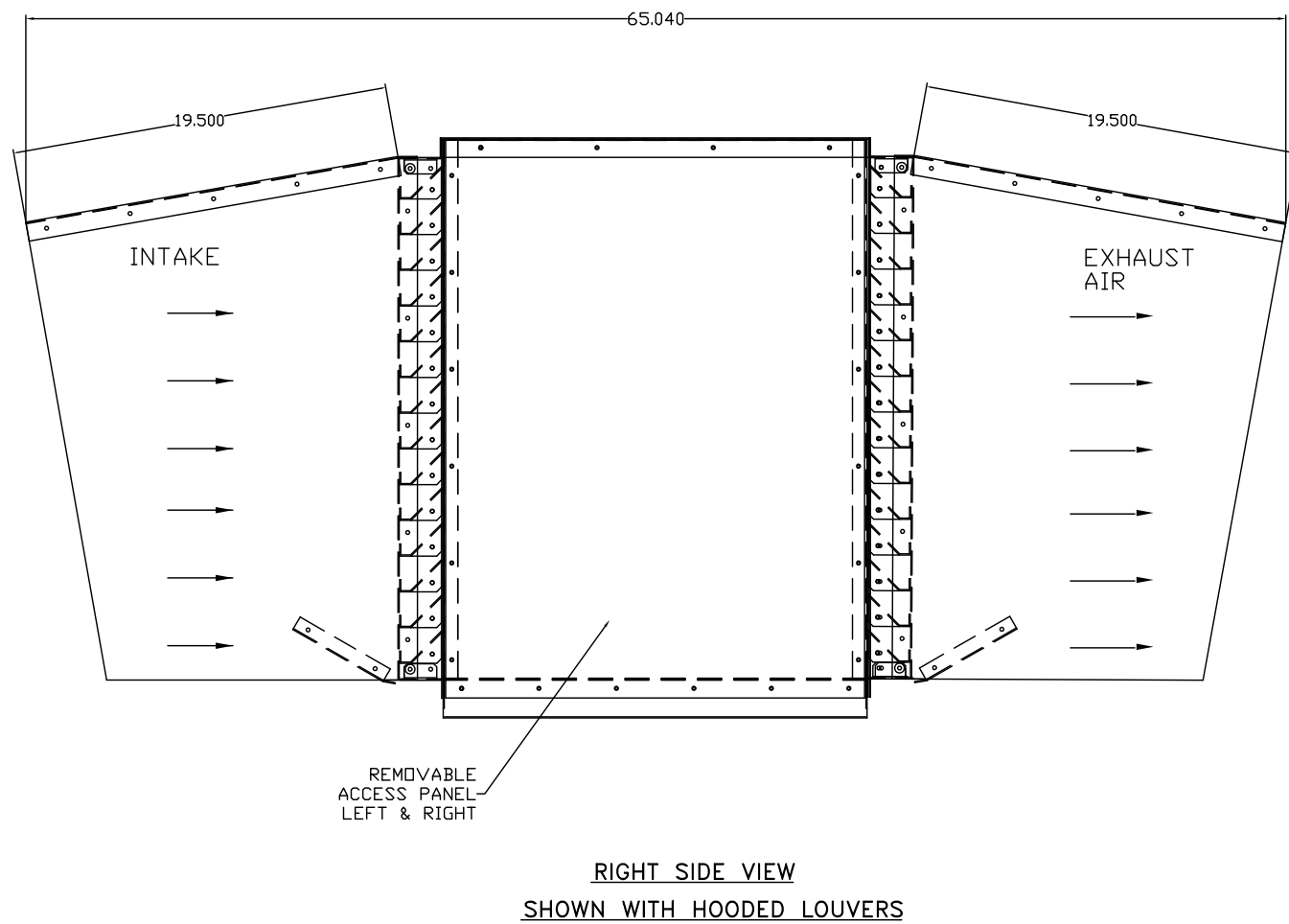
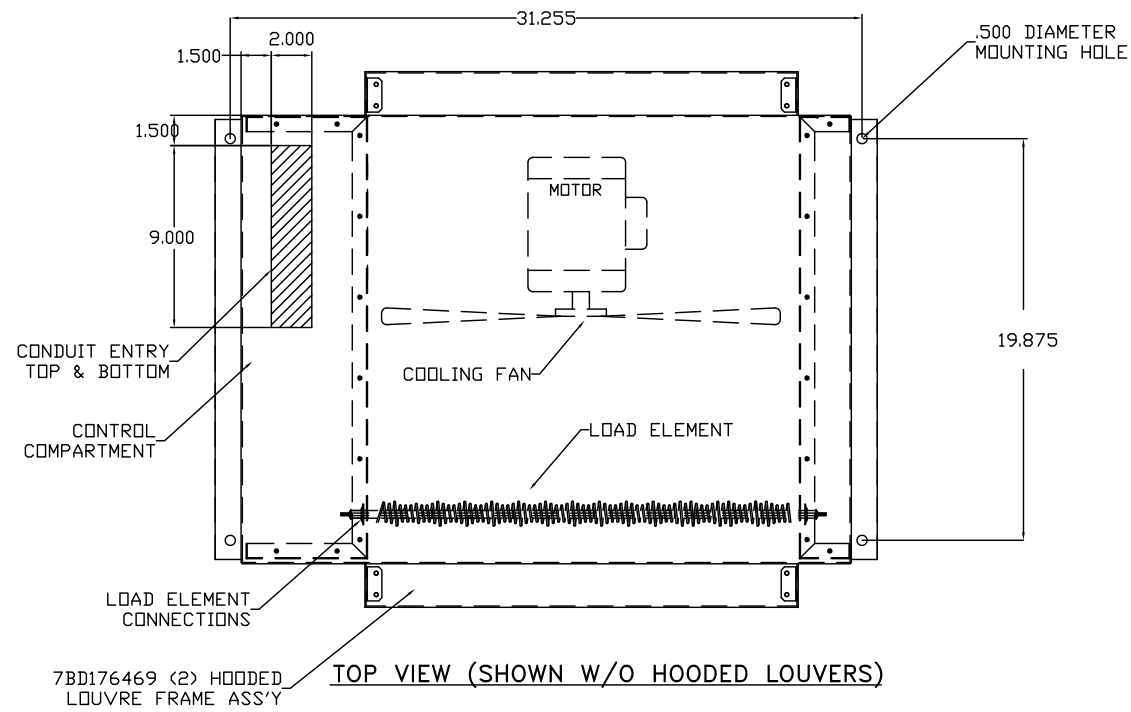


NOTES:

1. CONSTRUCTION: ALL BOLTED FORMED HOT ROLLED STEEL
INTERIOR PARTS FORMED GALVANIZED
2. SURFACE PREPARATION: ABRASIVE CLEANED OR CHEMICALLY CLEANED AND PHOSPHATIZED
FINISH COLOR: ASA 49 GRAY
PRIMER: RECOATABLE EPOXY PRIMER
(24702600), PART G, B67H5, BUFF PRIMER
(24702700), PART H, B67V5, CATALYST

PAINT: POLANE HS PLUS POLYURETHANE
(24702800), F63JXA5108-1407, ASA 49 GRAY
(24702801), V66V55, CATALYST
(24702802), V66VB11, ACCELERATOR
3. ENVIRONMENTAL: TYPE 3R
4. UNIT WEIGHT: 210 LBS.
5. SHIPPING WEIGHT: 250 LBS.



THE INFORMATION HEREON IS THE PROPERTY OF SIMPLEX, INC., AND/OR ITS SUBSIDIARIES. WITHOUT WRITTEN PERMISSION ANY COPYING, TRANSMITTAL TO OTHERS AND USE EXCEPT THAT FOR WHICH IT IS LOANED IS PROHIBITED. DESIGN SUBJECT TO CHANGE WITHOUT NOTICE.
©2010 SIMPLEX, INC. ALL RIGHTS RESERVED.

SIMPLEX			SPRINGFIELD, ILLINOIS
SCALE :	APPROVED BY :	DRAWN BY : RER	
DATE : 08-02-10		REVISED :	
POLARIS-75 LOAD BANK PICTORIAL			
STANDARD			DRAWING NUMBER 211940