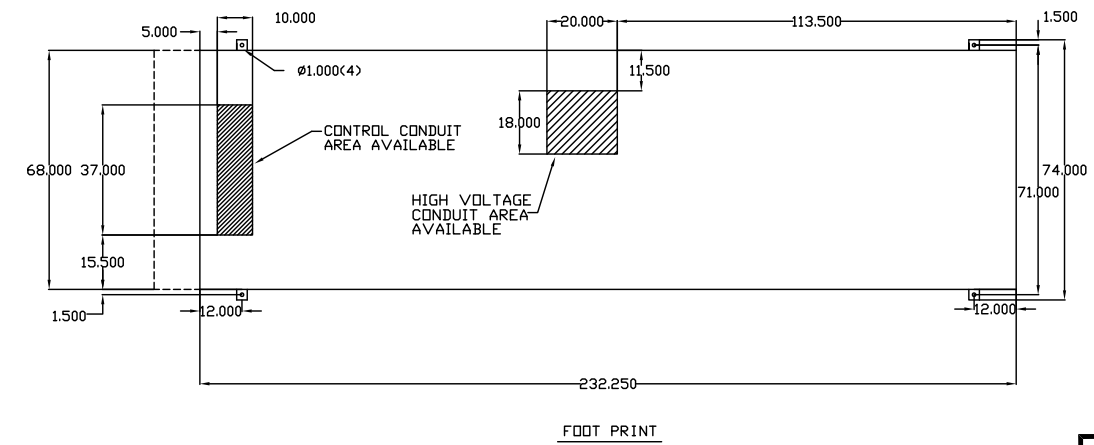
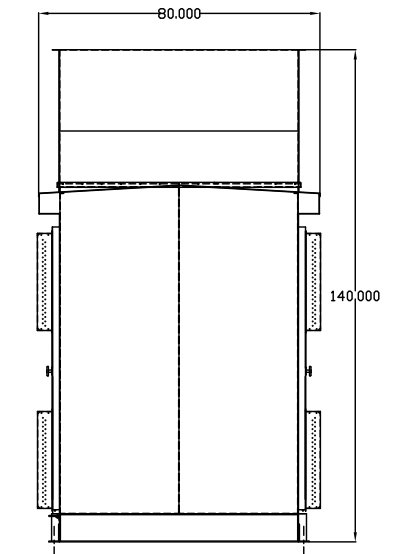
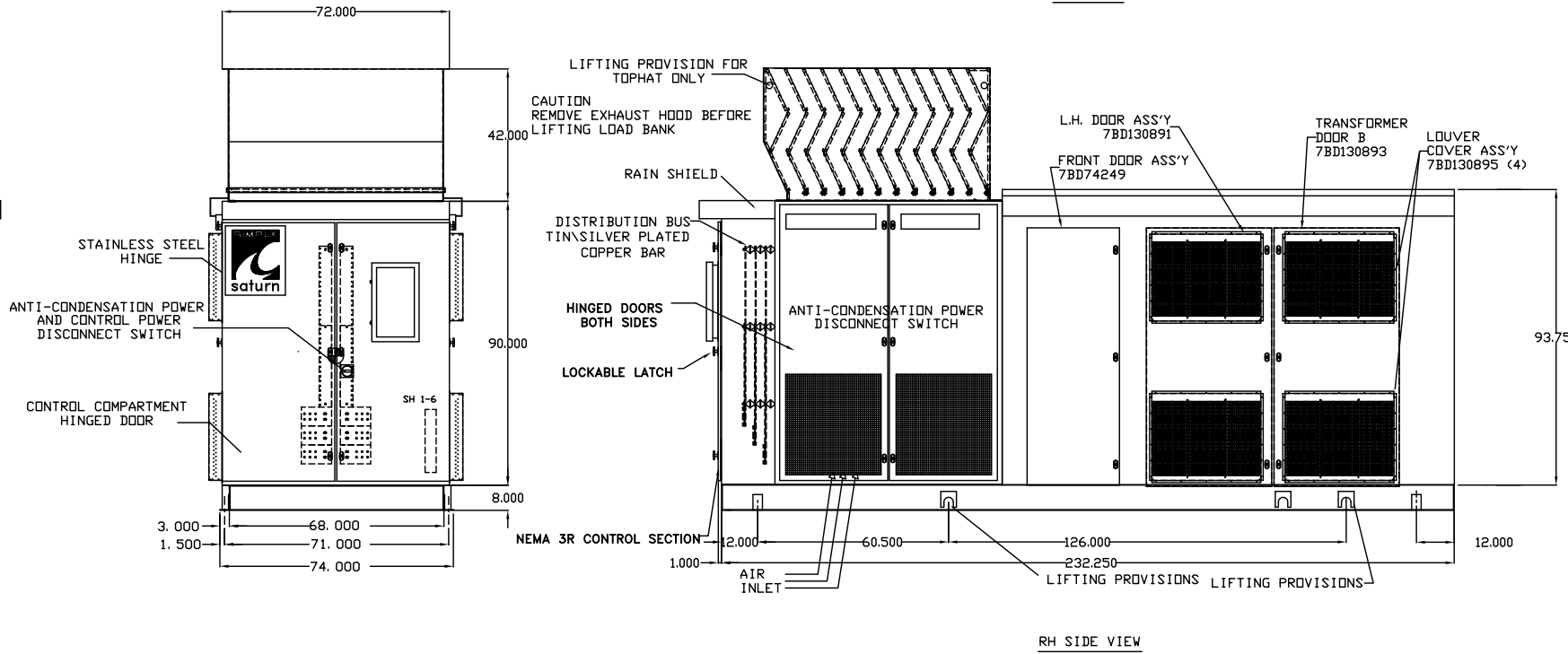
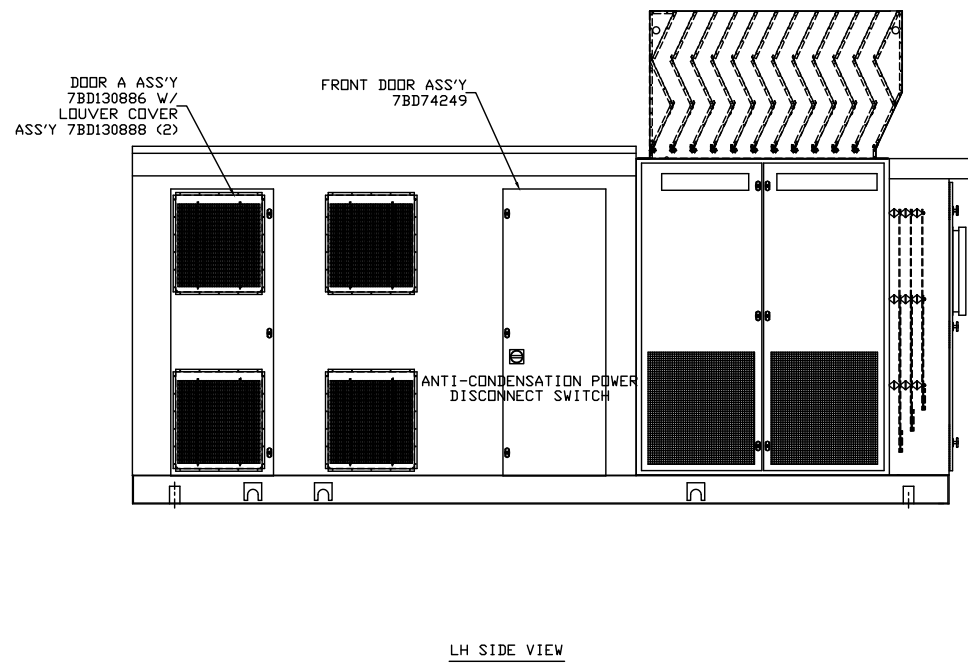
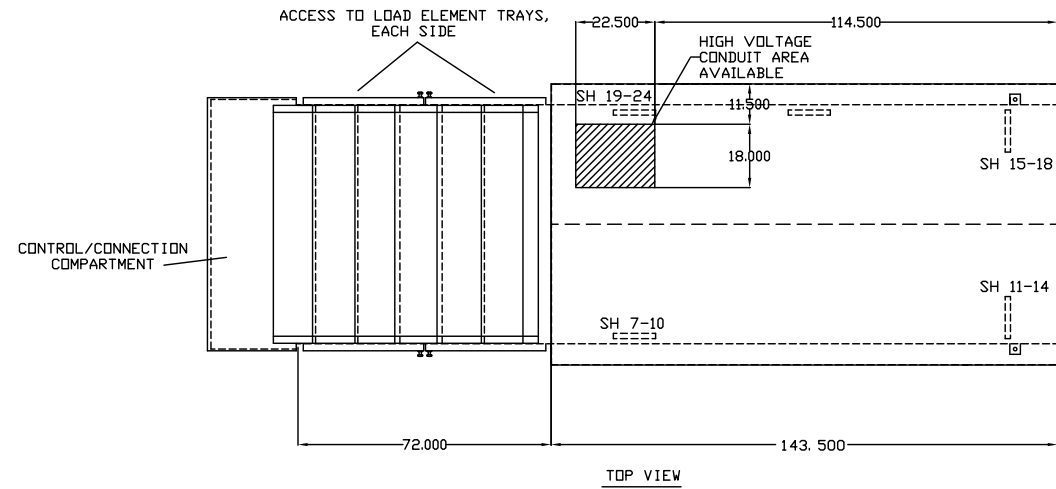


NOTES:

1. BOTTOM OF CONTROL COMPARTMENT AVAILABLE FOR CONDUIT ENTRY.
2. CONSTRUCTION: ALL WELDED FORMED STEEL FRAME, DOORS, PANELS AND SKID. SKID AND STRUCTURAL MEMBERS 7GA HRS, OUTER SHELL 12GA HRS AND HINGED DOORS 14GA HRS. ALL HINGES, EXTERIOR FASTENERS, AND EXTERIOR HARDWARE IS STAINLESS STEEL.
3. SURFACE PREPARATION: ABRASIVE CLEANED OR CHEMICALLY CLEANED AND PHOSPHATIZED  
FINISH COLOR:  
PRIMER: RECOATABLE EPOXY PRIMER (24702600), PART G, B67H5 (24702700), PART H, B67V5      BUFF PRIMER (24702800), F63JXA5108-1407 (24702801), V66V55 (24702802), V66VB11      CATALYST      ASA 49 GRAY CATALYST ACCELERATOR
4. APPROXIMATE SHIPPING WEIGHT: 23,650 LBS. TOTAL UNIT  
: 22,550 LBS. LOAD BANK  
: 1100 LBS. TOPHAT
5. 20 HP MOTOR, 60" COOLING FAN



THE INFORMATION HEREON IS THE PROPERTY OF SIMPLEX, INC., AND/OR ITS SUBSIDIARIES. WITHOUT WRITTEN PERMISSION ANY COPYING, TRANSMITTAL TO OTHERS AND USE EXCEPT THAT FOR WHICH IT IS LOANED IS PROHIBITED. DESIGN SUBJECT TO CHANGE WITHOUT NOTICE. ©2010 SIMPLEX, INC. ALL RIGHTS RESERVED.

<b>SIMPLEX</b>		SPRINGFIELD, ILLINOIS
SCALE :	APPROVED BY :	DRAWN BY : RER
DATE : 08-02-10		REVISED :
SATURN-HV LOAD BANK PICTORIAL		
STANDARD	DRAWING NUMBER 211947	