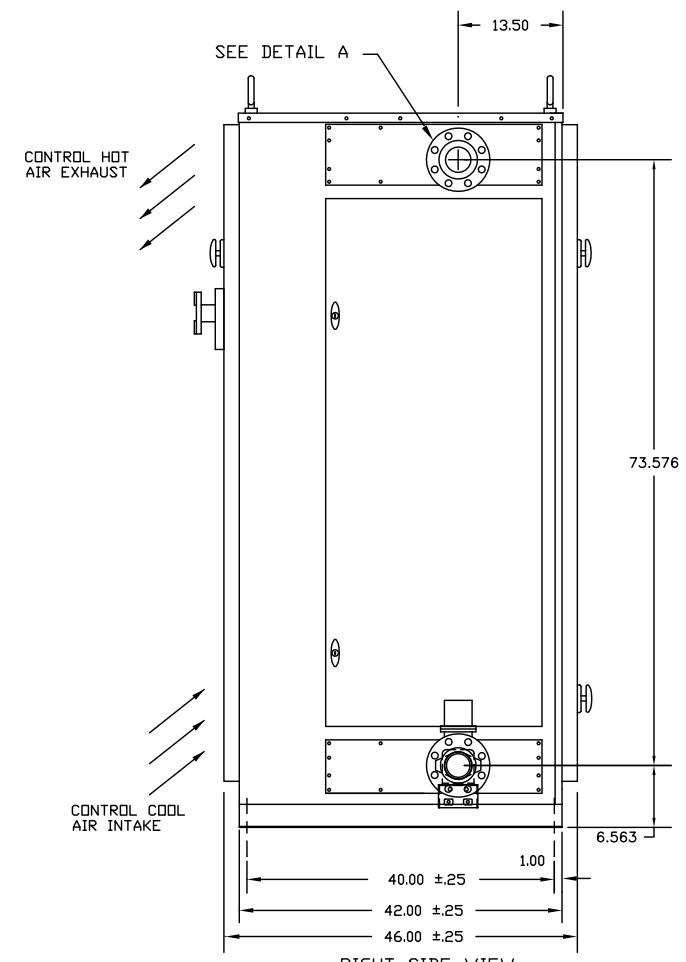
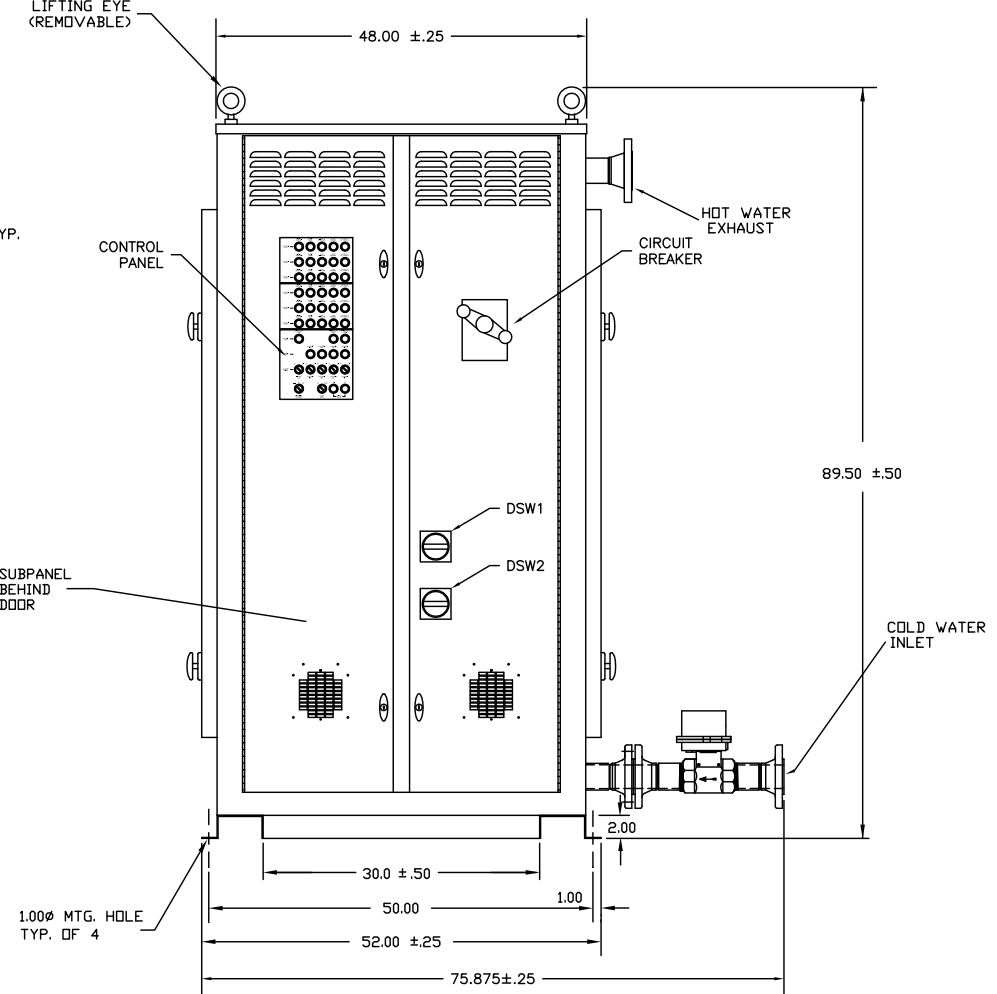
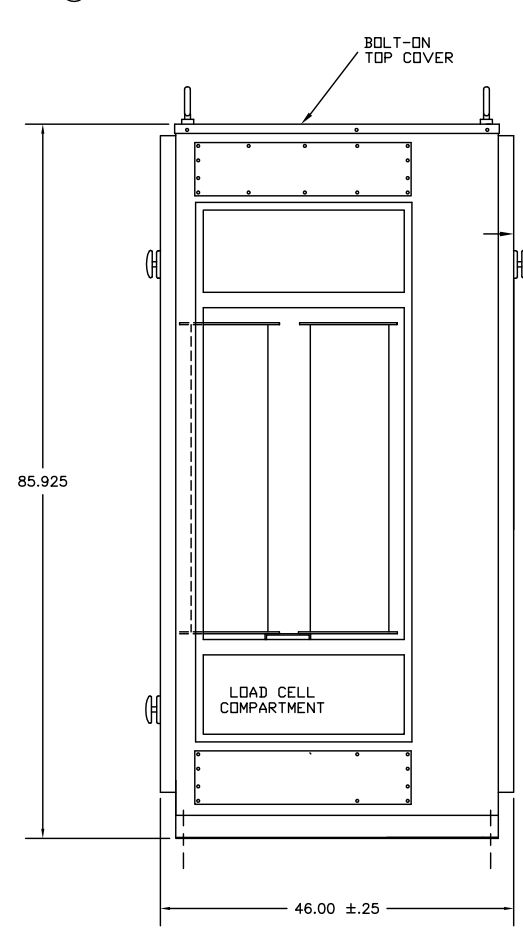


- NOTES
- CONSTRUCTION:
 - FRAME - ALL WELDED STEEL, HRS
 - BASE - FORMED STEEL CHANNEL WITH BOLT DOWN FLANGE
 - SIDE PANELS, TOP, AND DOORS - 14 GAUGE SHEET STEEL
 - ELECTRICAL SUB-PANELS - 12 GAUGE GALVANIZED SHEET STEEL
 - COOLING VESSELS 10\"/>
 - PIPING SCHEDULE 80, GRADE B STD BLACK PIPE AND FLEXIBLE HOSE. 200 PSI MIN. TEST PRESSURE
 - HINGES - STAINLESS STEEL
 - ALL BUS BAR - TIN PLATED COPPER
 - ALL HARDWARE ZINC PLATED
 - SURFACE PREPARATION: ABRASIVE CLEANED OR CHEMICALLY CLEANED AND PHOSPHATIZED
 FINISH COLOR: ASA 49 GRAY
 PRIMER: TILE CLAD WB EPOXY (24702501), PART A, B73A200, GRAY PRIMER (24702502), PART B, B73V200, CATALYST
 PAINT: CENTURION POLYURETHANE (24708500), B65W711, ASA 49 GRAY (24722500), B65V700, CATALYST
 - RATINGS:
 - ENCLOSURE - NEMA 1
 - APPROXIMATE WEIGHT - 3100 LBS. (APPROX. WEIGHT FILLED WITH WATER - 4000 LBS.)
 - MINIMUM FLOW REQUIRED - 90GPM FOR 600KW
 - 150 MICRON FILTRATION RECOMMENDED
 - ALARM SENSORS

OVER TEMPERATURE - 175°F	} (ONE EACH PER LOAD CELL)
OVER PRESSURE - 75 PSI	
LOSS OF FLOW - 12 GPM	

(FLOW SWITCH ALSO FUNCTIONS AS LOW LEVEL SENSOR)



LEFT SIDE VIEW WITH ACCESS DOOR REMOVED

FRONT VIEW (LESS MOTORIZED BALL VALVE)

RIGHT SIDE VIEW (LESS MOTORIZED BALL VALVE)

THE INFORMATION HEREON IS THE PROPERTY OF SIMPLEX, INC., AND/OR ITS SUBSIDIARIES. WITHOUT WRITTEN PERMISSION ANY COPYING, TRANSMITTAL TO OTHERS AND USE EXCEPT THAT FOR WHICH IT IS LOANED IS PROHIBITED. DESIGN SUBJECT TO CHANGE WITHOUT NOTICE. ©2010 SIMPLEX, INC. ALL RIGHTS RESERVED.

SIMPLEX			SPRINGFIELD, ILLINOIS
SCALE :	APPROVED BY :	DRAWN BY : RER	
DATE : 08-02-10		REVISED :	
LBW-600 LOAD BANK PICTORIAL			
STANDARD			DRAWING NUMBER 211956