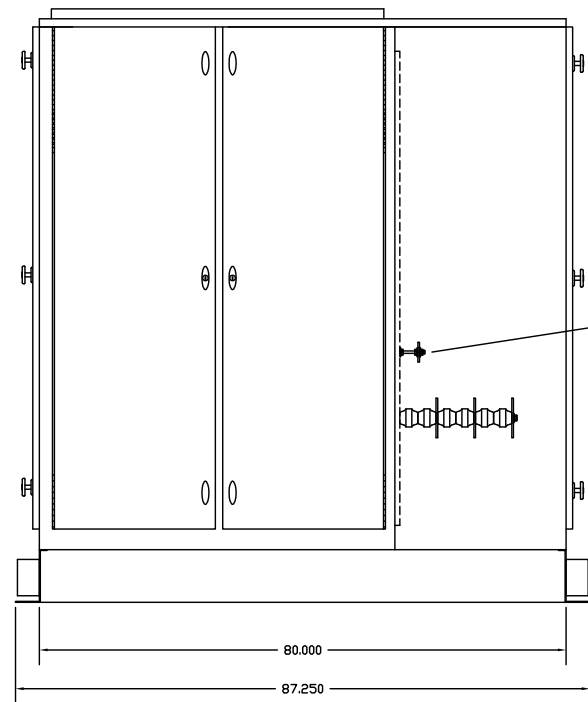


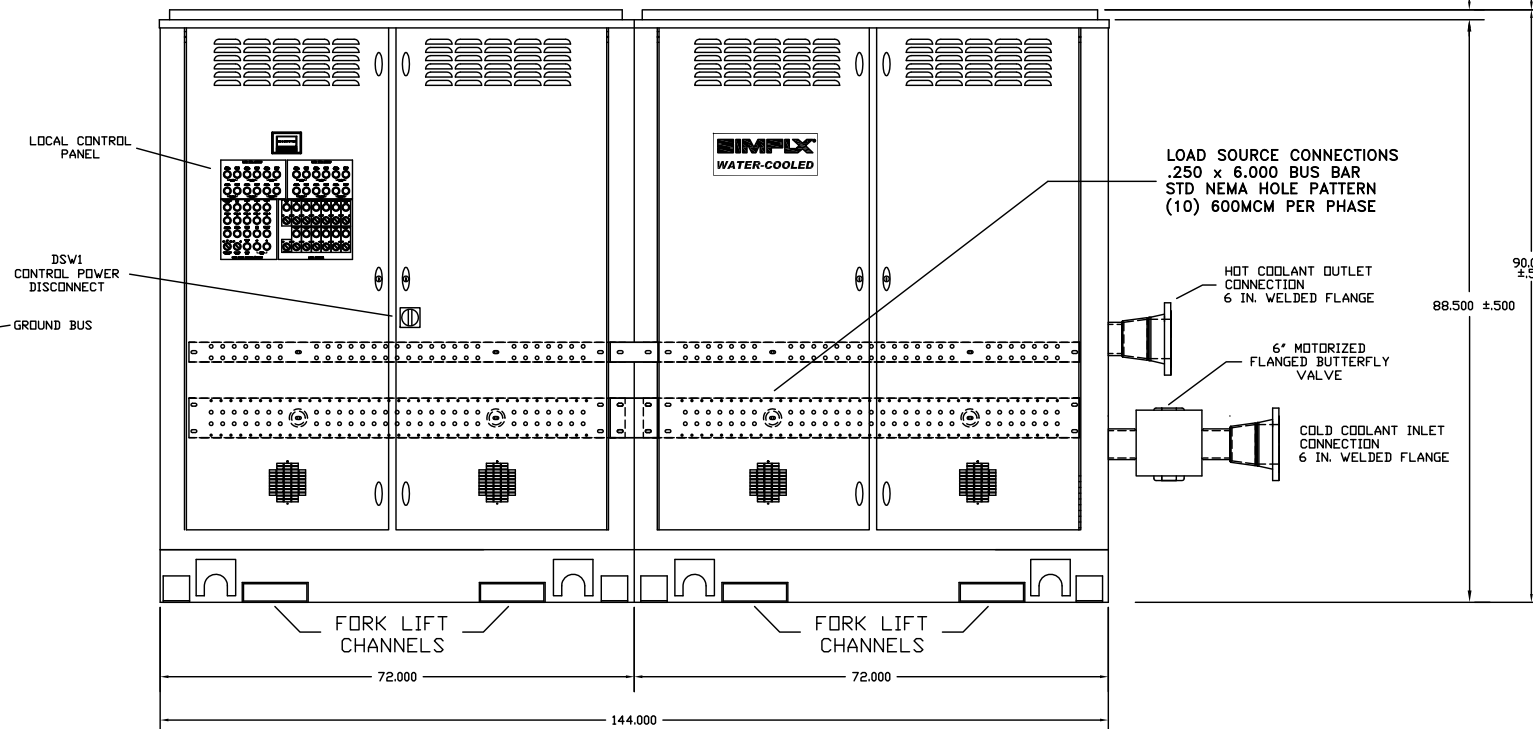
TOP VIEW  
(COVERS REMOVED) 2" MIN. HEADROOM CLEARANCE REQUIRED FOR LOAD BANK SERVICING

**NOTES:**

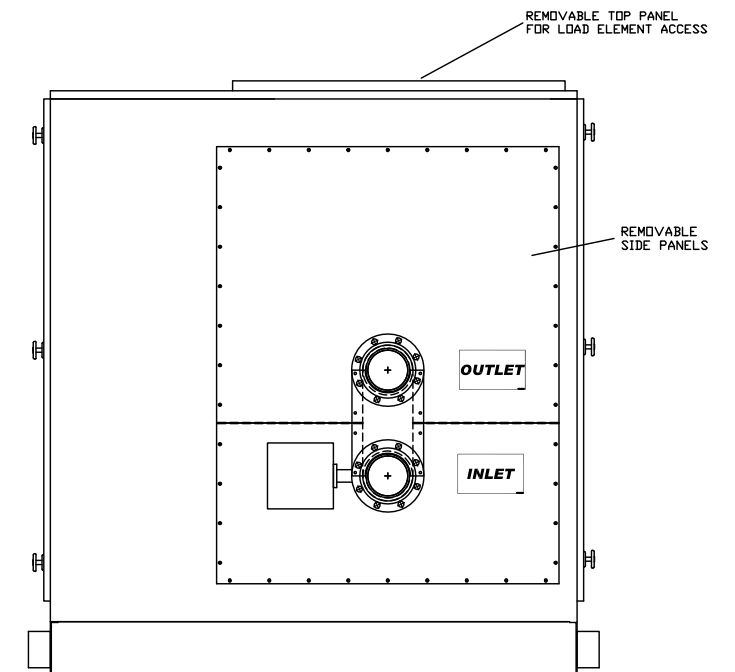
1. CONSTRUCTION:
  - A. ENCLOSURE: ALL WELDED FORMED STEEL FRAME, DOORS, COVER PANELS, AND BASE.
  - B. COOLING VESSEL: 10 IN NOMINAL STEEL PIPE, SCH-40, GRADE B 0.500 IN THICK WALL,
  - C. PLUMBING: SCHEDULE 80 BLACK PIPE
2. SURFACE PREPARATION: ABRASIVE CLEANED OR CHEMICALLY CLEANED AND PHOSPHATIZED
  - FINISH COLOR: ASA 49 GRAY
  - PRIMER: RECOATABLE EPOXY PRIMER (24702600), PART G, B67H5 (24702700), PART H, B67V5
  - PAINT: POLANE HS PLUS POLYURETHANE (24702800), F63JXA5108-1407 (24702801), V66V55 (24702802), V66VB11
  - BUFF PRIMER CATALYST
  - ASA 49 GRAY CATALYST ACCELERATOR



SIDE VIEW



FRONT VIEW



SIDE VIEW

THE INFORMATION HEREON IS THE PROPERTY OF SIMPLEX, INC., AND/OR ITS SUBSIDIARIES. WITHOUT WRITTEN PERMISSION ANY COPYING, TRANSMITTAL TO OTHERS AND USE EXCEPT THAT FOR WHICH IT IS LOANED IS PROHIBITED. DESIGN SUBJECT TO CHANGE WITHOUT NOTICE. ©2010 SIMPLEX, INC. ALL RIGHTS RESERVED.

<b>SIMPLEX</b>			SPRINGFIELD, ILLINOIS
SCALE :	APPROVED BY :	DRAWN BY : RER	
DATE : 08-02-10		REVISED :	
LBW-2250 LOAD BANK PICTORIAL			
STANDARD			DRAWING NUMBER 211957