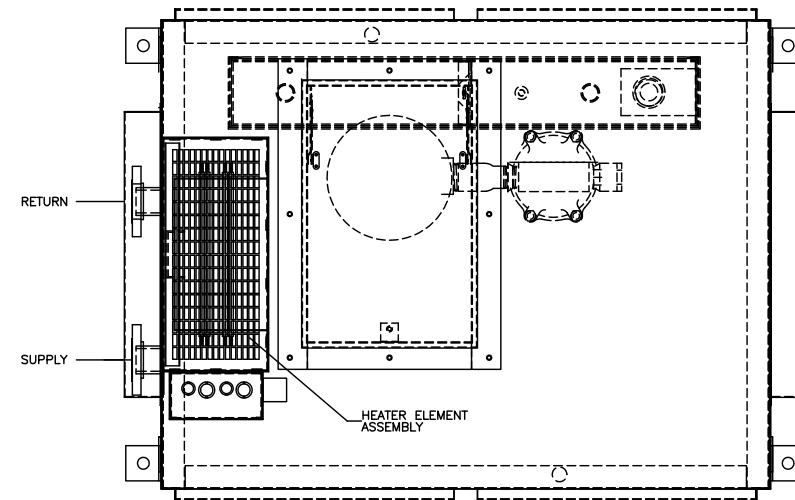
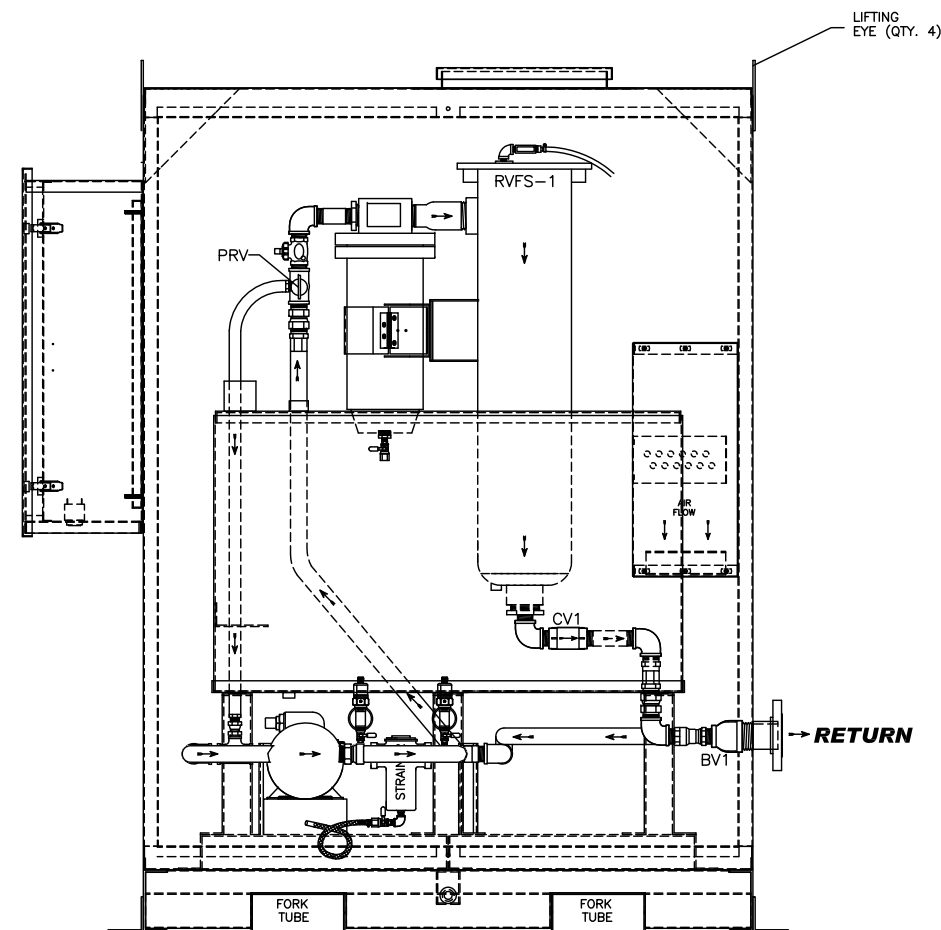


NOTES:

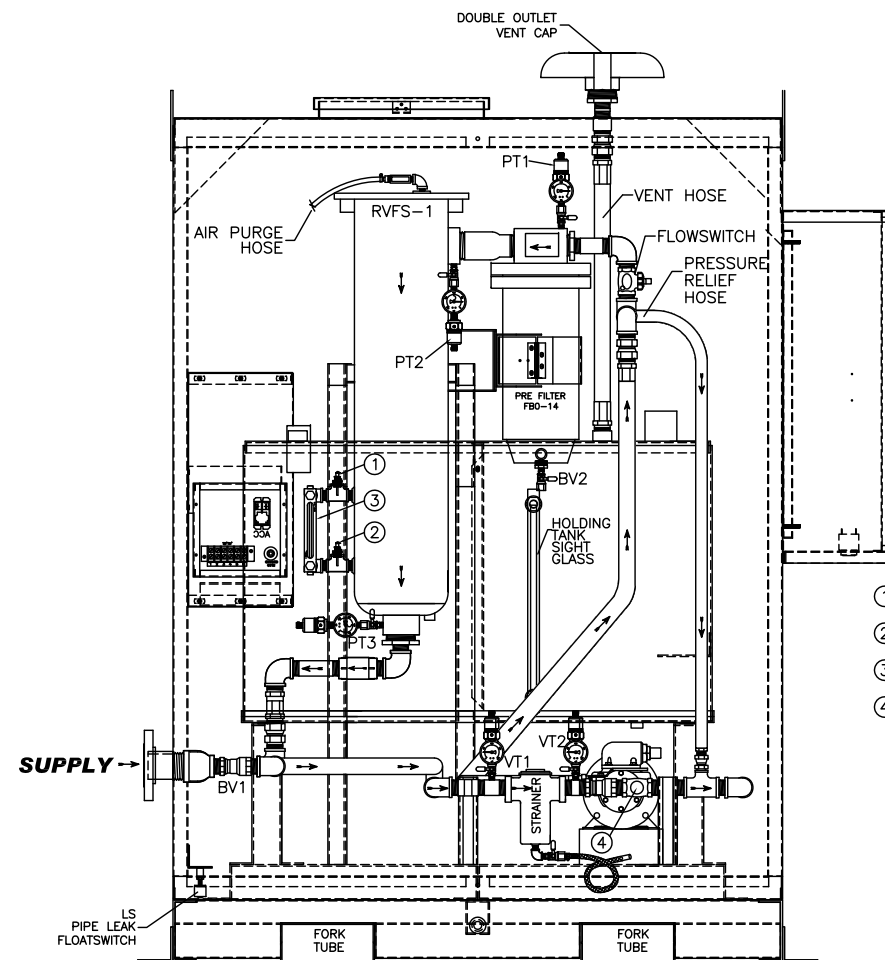
1. UNIT MUST BE GROUNDED FOR OPERATORS SAFETY.
2. CONTROLLER TYPE 3R
3. CABINET PRIMED & PAINTED 49 GRAY
4. ALUMINUM HOLDING TANK CAPACITY, 25 GALLONS
5. PIPING BLACK PIPE, SCH 40, FITTINGS THREADED OR FLANGED 150LB
6. FILTRATION = 5 MICRON. FILTER VESSEL CONSTRUCTION, 250 P.S.I. ASME CODE, CARBON STEEL.
7. CABINET CONSTRUCTION, 12 GA. H.R.S.
8. SEE WATER TANK DETAIL FOR ADDITIONAL FUEL AND WATER PLUMBING.



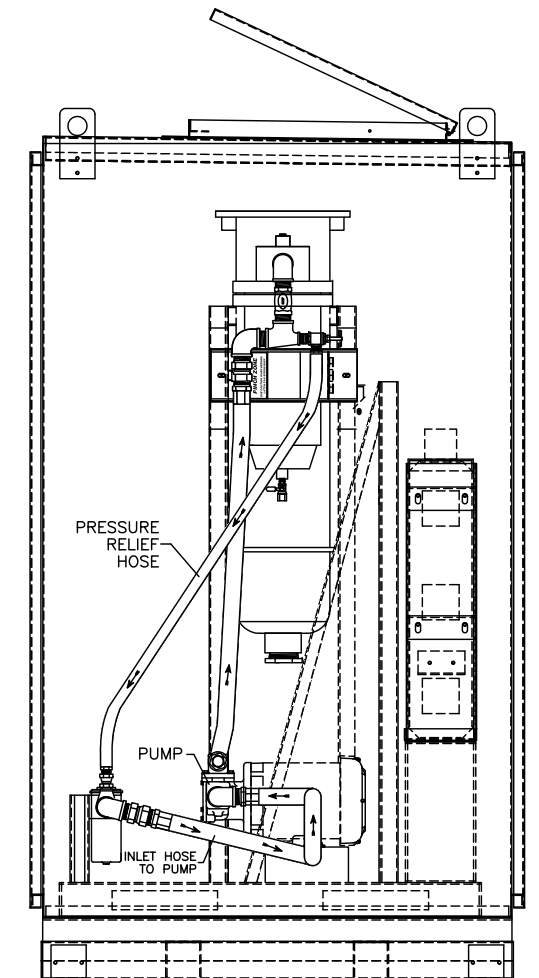
TOP VIEW



REAR VIEW  
LESS OUTER DOORS



FRONT VIEW  
LESS OUTER DOORS



RIGHT SIDE VIEW

THE INFORMATION HEREON IS THE PROPERTY OF SIMPLEX, INC., AND/OR ITS SUBSIDIARIES. WITHOUT WRITTEN PERMISSION ANY COPYING, TRANSMITTAL TO OTHERS AND USE EXCEPT THAT FOR WHICH IT IS LOANED IS PROHIBITED. DESIGN SUBJECT TO CHANGE WITHOUT NOTICE. ©2010 SIMPLEX, INC. ALL RIGHTS RESERVED.

<b>SIMPLEX</b>		SPRINGFIELD, ILLINOIS
SCALE :	APPROVED BY :	DRAWN BY : RER
DATE : 08-10-10		REVISED :
SMARTFILTER PLUMBING		
STANDARD	DRAWING NUMBER 211963	