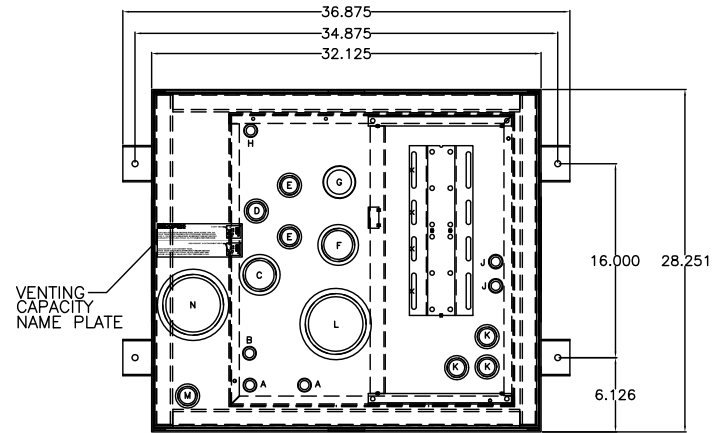


TANK FITTING SCHEDULE

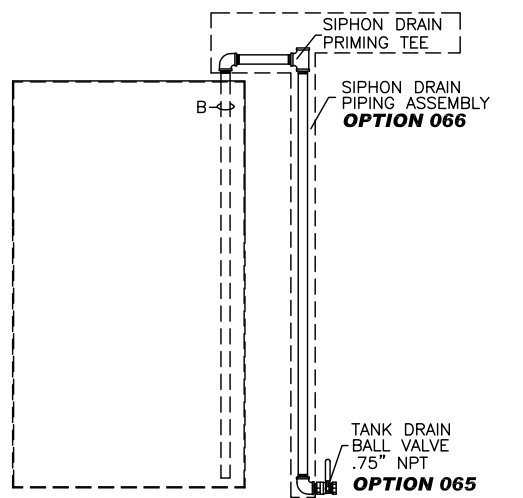
PORT	DESCRIPTION	
A	ENGINE SUPPLY DROP TUBE	0.75" NPT, MALE
B	SIPHON DRAIN DROP TUBE	0.75" NPT, MALE
C	OVERFLOW PORT (NOT USED WITH RETURN PUMP)	2.00" NPT, FEMALE
D	ENGINE RETURN PORT	1.00" NPT, FEMALE
E	EXTRA PIPE FLANGE	1.00" NPT, FEMALE
F	TANK VENT PORT	2.00" NPT, FEMALE
G	MANUAL FILL PORT	2.00" NPT, MALE
H	HAND PUMP DROP TUBE	0.75" NPT, MALE
J	PUMP CONNECTION TO TANK	0.75" NPT, MALE
K	FLOATSWITCH MOUNTING PORT	1.00" NPT, FEMALE
L	TANK EMERGENCY VENT	4.00" NPT, FEMALE
M	LEAK SENSOR PORT	1.00" NPT, FEMALE
N	SECONDARY CONTAINMENT EMERGENCY VENT	4.00" NPT, FEMALE
P	RUPTURE BASIN DRAIN	0.375" NPT, FEMALE



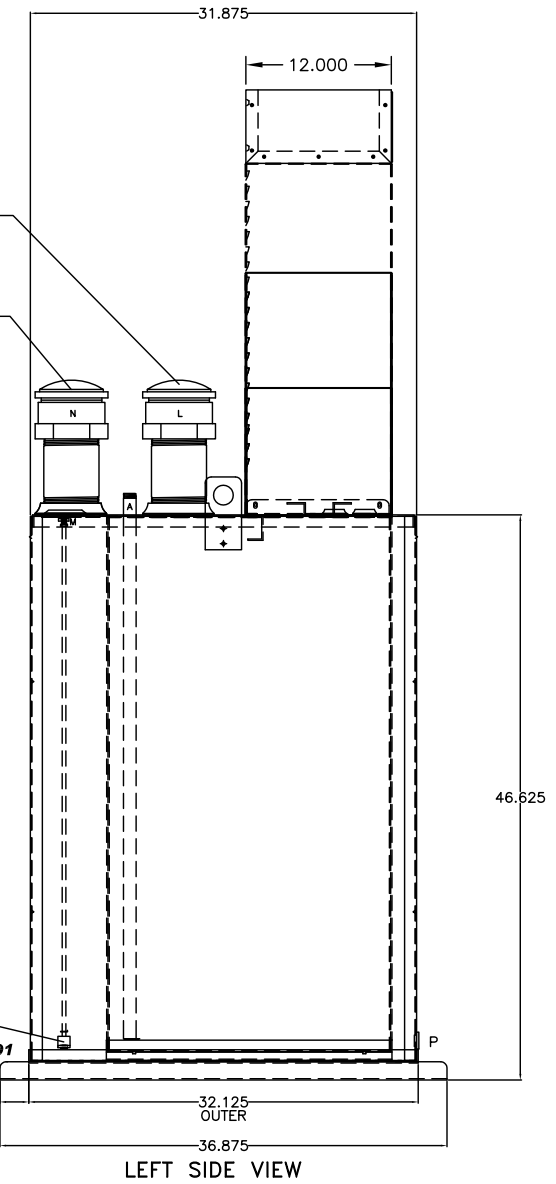
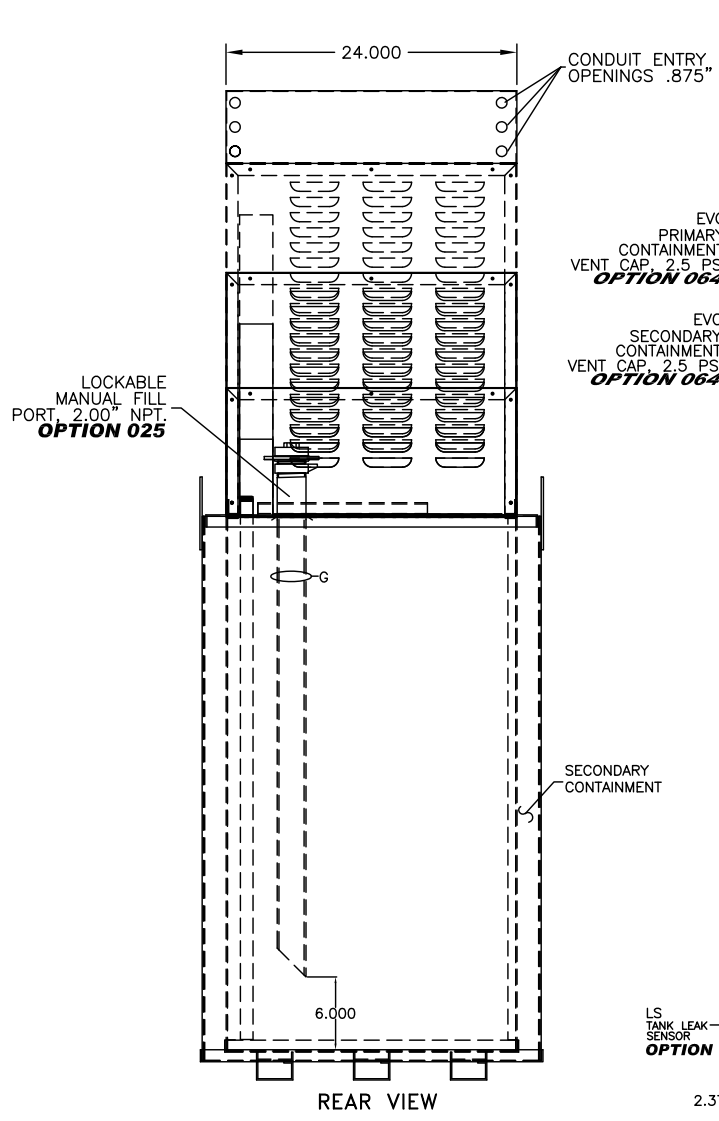
OPTIONS INSTALLED	OPTIONS INSTALLED
<input type="checkbox"/> X002-DELETION OF STD PUMP & MOTOR	<input type="checkbox"/> 215- SPIRAL LEVEL GAUGE
<input type="checkbox"/> 015-MANUAL HAND PUMP	<input type="checkbox"/> 260- MAIN DISCONNECT SWITCH
<input type="checkbox"/> 025-MANUAL FILL PIPE W/LOCKABLE CAP	<input type="checkbox"/> 270- POWER AVAILABLE PILOT LIGHT
<input type="checkbox"/> 060-FUEL STRAINER, Y-TYPE, 1.0"NPT., 20 MESH	<input type="checkbox"/> 280- PUMP RUN-OFF-AUTO SWITCH
<input type="checkbox"/> 064-EMERGENCY VENT CAP, 4.00"NPT., 2.5 P.S.I.	<input type="checkbox"/> 311-LOW FUEL LEVEL ALARM
<input type="checkbox"/> 065-TANK DRAIN BALL VALVE	<input type="checkbox"/> 312-HIGH FUEL LEVEL ALARM
<input type="checkbox"/> 066-SIPHON DRAIN PIPING ASSEMBLY	<input type="checkbox"/> 325-HIGH FUEL LEVEL PUMP STOP
<input type="checkbox"/> 070-PRIMING TEE & CHECK VALVE ASSEMBLY	<input type="checkbox"/> 334-ALARM HORN WITH SILENCE PUSHBUTTON
<input type="checkbox"/> 080-SOLENOID VALVE, M.C. 115VAC	<input type="checkbox"/> 340- PUMP RUNNING LIGHT
<input type="checkbox"/> 087-PUMP INLET BALL VALVE	<input type="checkbox"/> 345- DUPLEX PUMP CONTROLLER
<input type="checkbox"/> 180-WEATHERPROOF MODIFICATIONS	<input type="checkbox"/> 390-OVERFLOW RETURN PUMP & CONTROLLER
<input type="checkbox"/> 191-FLOATSWITCH IN RUPTURE BASIN	
<input type="checkbox"/> 192-RUPTURE BASIN DRAIN BALL VALVE	

- NOTES:
- 1) CONSTRUCTION: 12 GA. H.R.S.
 - 2) LISTING: UL 142
 - 3) RATING: ATMOSPHERIC TANK TESTED TO 3 PSI
 - 4) FINISH: TANK POWDER COATED BONE WHITE
EQUIPMENT COVER POWDER COATED BONE WHITE
 - 5) DUE TO SYSTEM COMPLEXITY, SOME COMPONENTS MAY NOT BE VISIBLE IN ALL VIEWS
 - 6) ALL DIMENSIONS ±.125"

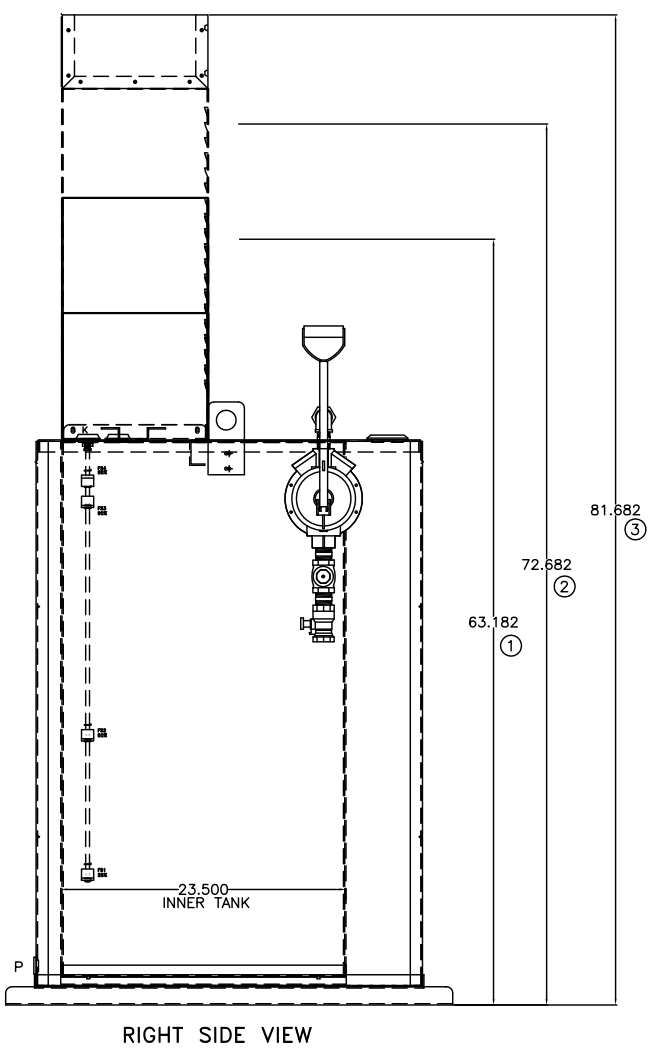
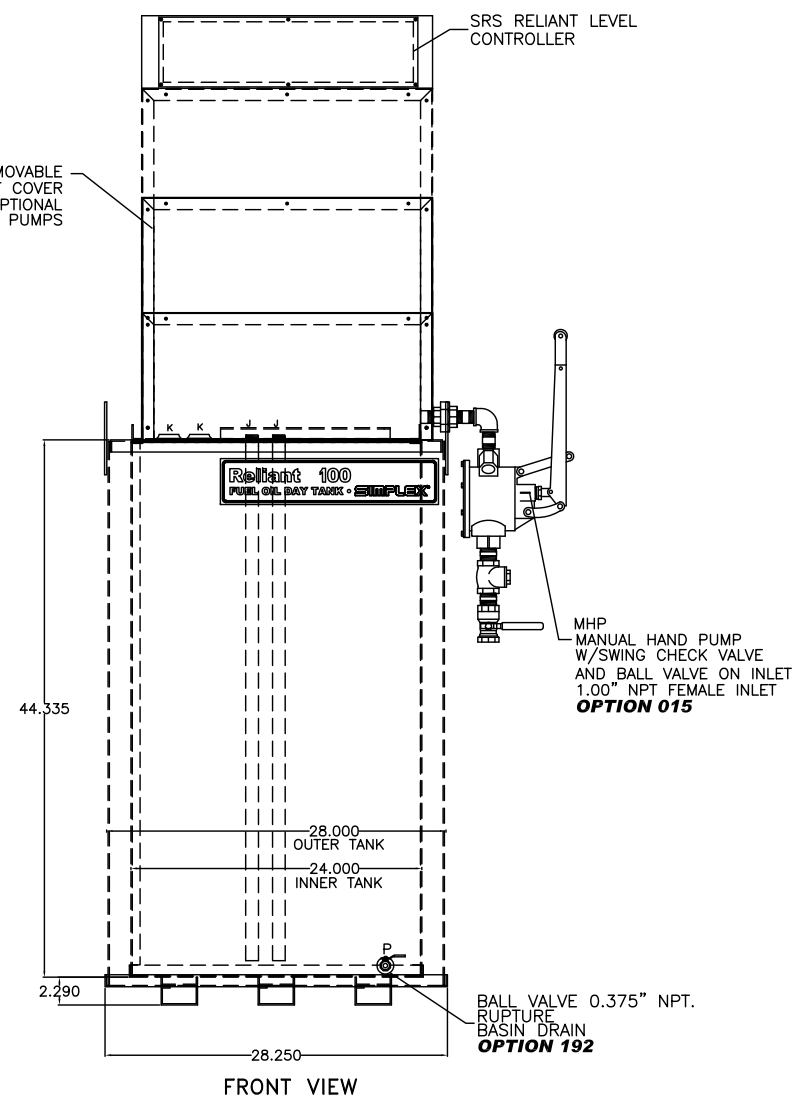
OPTIONS SHIPPED LOOSE
<input type="checkbox"/> 040-WALL MOUNTING BRACKET
<input type="checkbox"/> 062- DUPLEX BASKET FUEL STRAINER, 1.0" NPT
<input type="checkbox"/> 063- VENT CAP
<input type="checkbox"/> 087- MANUAL SHUT-OFF BALL VALVE .50"NPT
<input type="checkbox"/> 088- MANUAL SHUT-OFF BALL VALVE 1.00"NPT
<input type="checkbox"/> 090- FOOT VALVE 1.00" NPT
<input type="checkbox"/> 093- FUSIBLE LINK VALVE 1.50" NPT
<input type="checkbox"/> 103-FLOW GAUGE, 1.00"NPT, 2-20GPM
<input type="checkbox"/> 286- PRESSURE DIFFERENTIAL SWITCH FOR STRAINER



SIPHON DRAIN DETAIL



DAY TANK SHOWN WITH STANDARD CONTROL SECTION AND OPTIONAL DUPLEX PUMP/LARGE PUMP SECTION SEE TANK HEIGHT.



THE INFORMATION HEREON IS THE PROPERTY OF SIMPLEX, INC., AND/OR ITS SUBSIDIARIES. WITHOUT WRITTEN PERMISSION ANY COPYING, TRANSMITTAL TO OTHERS AND USE EXCEPT THAT FOR WHICH IT IS LOANED IS PROHIBITED. DESIGN SUBJECT TO CHANGE WITHOUT NOTICE. ©2010 SIMPLEX, INC. ALL RIGHTS RESERVED.

SIMPLEX		SPRINGFIELD, ILLINOIS
SCALE :	APPROVED BY :	DRAWN BY : RER
DATE : 08-10-10		REVISED :
RELIANT 100 FUEL OIL DAY TANK PICTORIAL		
STANDARD	DRAWING NUMBER 211968	