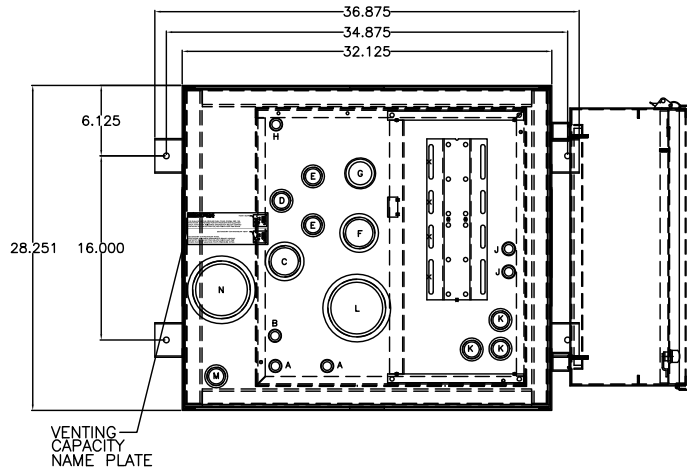


**TANK FITTING SCHEDULE**

PORT	DESCRIPTION	
A	ENGINE SUPPLY DROP TUBE	0.75" NPT, MALE
B	SIPHON DRAIN DROP TUBE	0.75" NPT, MALE
C	OVERFLOW PORT (NOT USED WITH RETURN PUMP)	2.00" NPT, FEMALE
D	ENGINE RETURN PORT	1.00" NPT, FEMALE
E	EXTRA PIPE FLANGE	1.00" NPT, FEMALE
F	TANK VENT PORT	2.00" NPT, FEMALE
G	MANUAL FILL PORT	2.00" NPT, MALE
H	HAND PUMP DROP TUBE	0.75" NPT, MALE
J	PUMP CONNECTION TO TANK	0.75" NPT, MALE
K	FLOATSWITCH MOUNTING PORT	1.00" NPT, FEMALE
L	TANK EMERGENCY VENT	4.00" NPT, FEMALE
M	LEAK SENSOR PORT	1.00" NPT, FEMALE
N	SECONDARY CONTAINMENT EMERGENCY VENT	4.00" NPT, FEMALE
P	RUPTURE BASIN DRAIN	0.375" NPT, FEMALE

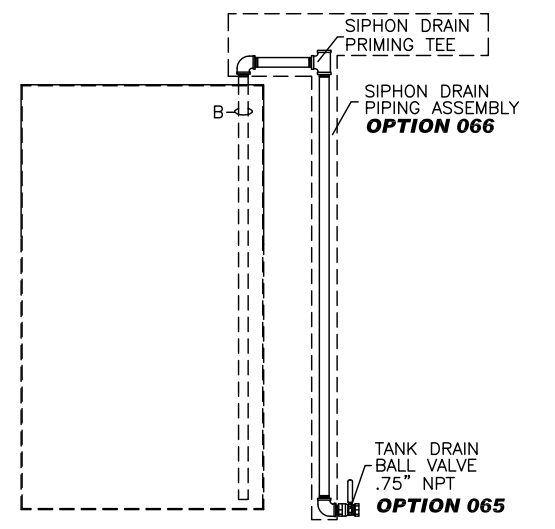


- OPTIONS INSTALLED**
- X002-DELETION OF STD PUMP & MOTOR
  - 015-MANUAL HAND PUMP
  - 025-MANUAL FILL PIPE W/LOCKABLE CAP
  - 060-FUEL STRAINER, Y-TYPE, 1.0"NPT., 20 MESH
  - 064-EMERGENCY VENT CAP, 4.00"NPT., 2.5 P.S.I.
  - 065-TANK DRAIN BALL VALVE
  - 066-SIPHON DRAIN PIPING ASSEMBLY
  - 070-PRIMING TEE & CHECK VALVE ASSEMBLY
  - 080-SOLENOID VALVE, N.C. 115VAC
  - 087-PUMP INLET BALL VALVE
  - 180-WEATHERPROOF MODIFICATIONS
  - 191-FLOATSWITCH IN RUPTURE BASIN
  - 192-RUPTURE BASIN DRAIN BALL VALVE

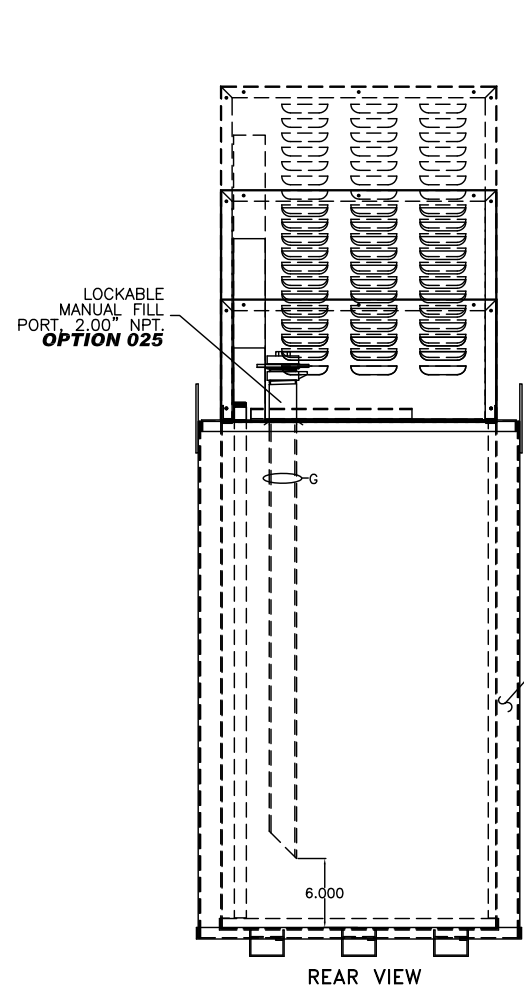
- OPTIONS INSTALLED**
- 215- SPIRAL LEVEL GAUGE
  - 260- MAIN DISCONNECT SWITCH
  - 270- POWER AVAILABLE PILOT LIGHT
  - 280- PUMP RUN-OFF-AUTO SWITCH
  - 311-LOW FUEL LEVEL ALARM
  - 312-HIGH FUEL LEVEL ALARM
  - 325-HIGH FUEL LEVEL PUMP STOP
  - 334-ALARM HORN WITH SILENCE PUSHBUTTON
  - 340- PUMP RUNNING LIGHT
  - 345- DUPLEX PUMP CONTROLLER
  - 390-OVERFLOW RETURN PUMP & CONTROLLER
- HIGH TOP USED W/ SINGLE PUMP 3/4 H.P. OR DUPLEX PUMPS/MOTORS

- OPTIONS SHIPPED LOOSE**
- 040-WALL MOUNTING BRACKET
  - 062- DUPLEX BASKET FUEL STRAINER, 1.0" NPT
  - 063- VENT CAP
  - 087- MANUAL SHUT-OFF BALL VALVE .50"NPT
  - 088- MANUAL SHUT-OFF BALL VALVE 1.00"NPT
  - 090- FOOT VALVE 1.00" NPT
  - 093- FUSIBLE LINK VALVE 1.50" NPT
  - 103-FLOW GAUGE, 1.00"NPT, 2-20GPM
  - 286- PRESSURE DIFFERENTIAL SWITCH FOR STRAINER

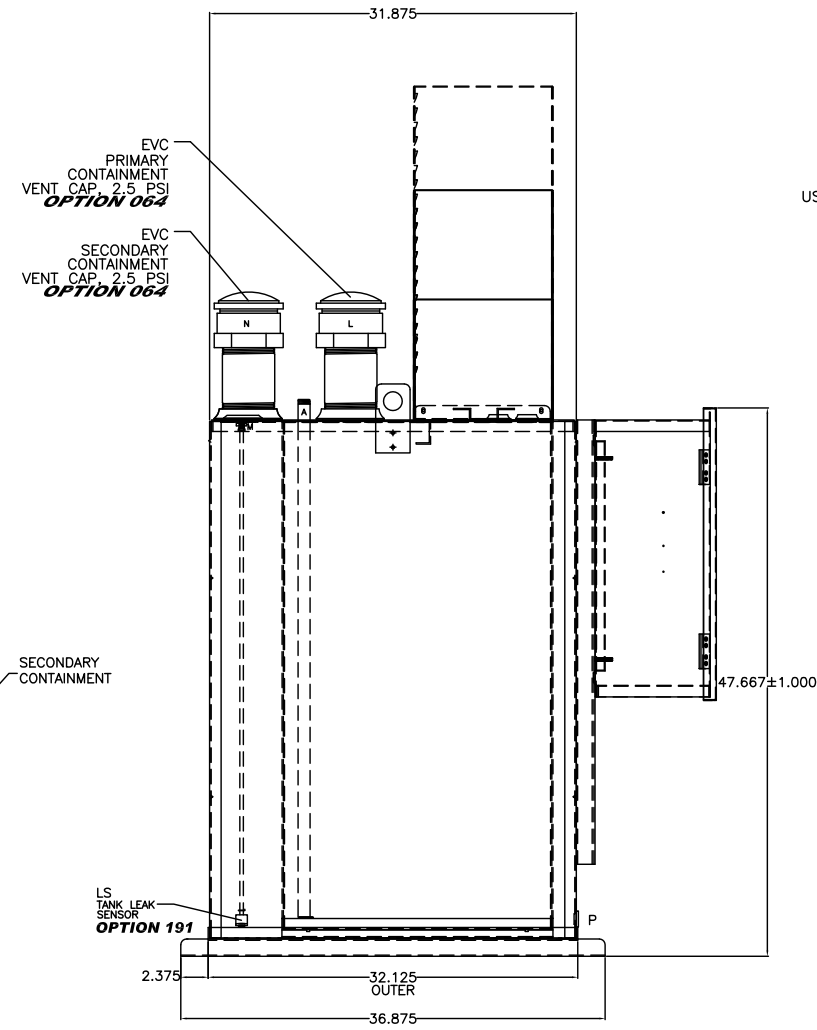
NOTES:  
 1) CONSTRUCTION: 12 GA. H.R.S.  
 2) LISTING: UL 142  
 3) RATING: ATMOSPHERIC TANK TESTED TO 3 PSI  
 4) FINISH: TANK POWDER COATED BONE WHITE  
 EQUIPMENT COVER POWDER COATED BONE WHITE  
 5) DUE TO SYSTEM COMPLEXITY, SOME COMPONENTS MAY NOT BE VISIBLE IN ALL VIEWS  
 6) ALL DIMENSIONS ±.125"



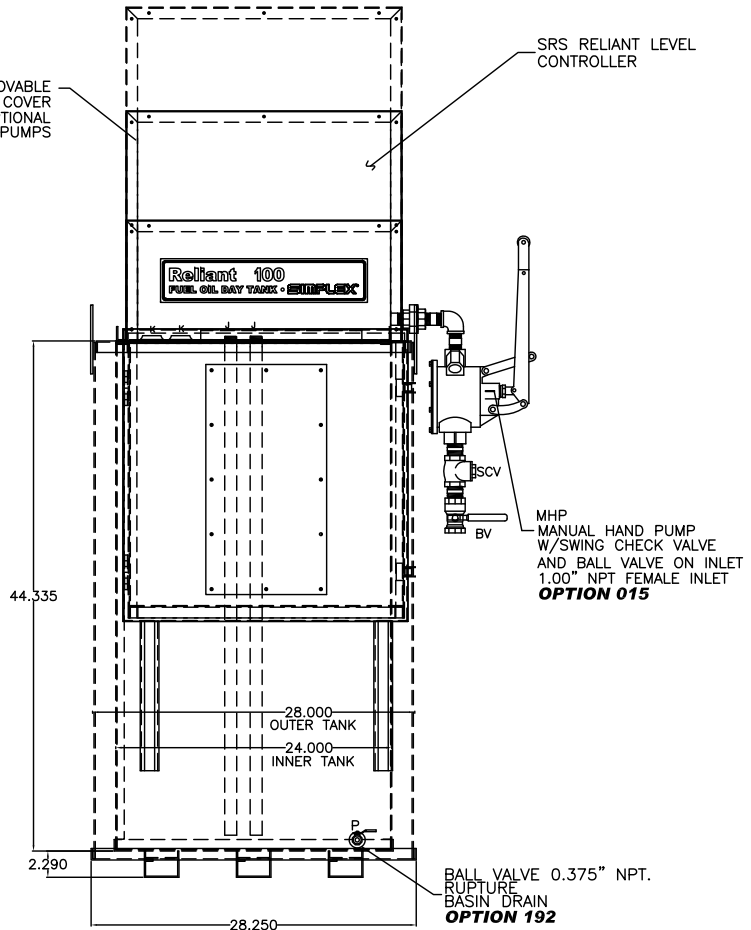
**SIPHON DRAIN DETAIL**



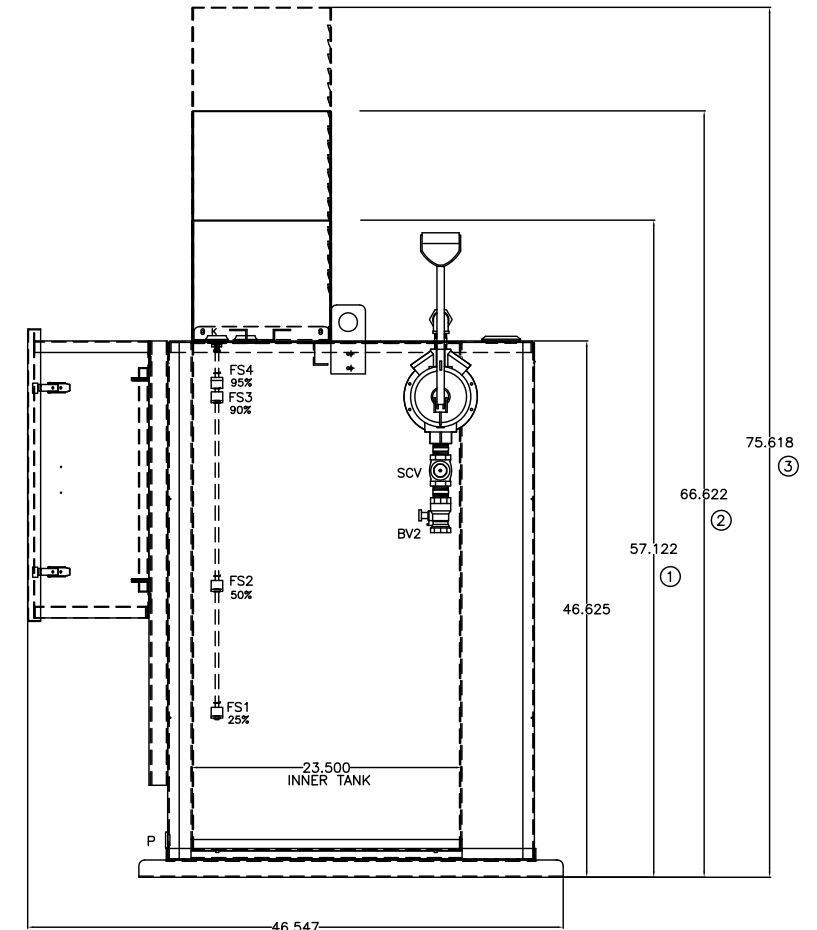
**REAR VIEW**



**LEFT SIDE VIEW**



**FRONT VIEW**



**RIGHT SIDE VIEW**

DAY TANK SHOWN WITH STANDARD CONTROL SECTION AND OPTIONAL DUPLEX PUMP/LARGE PUMP SECTION SEE TANK HEIGHT.

THE INFORMATION HEREON IS THE PROPERTY OF SIMPLEX, INC., AND/OR ITS SUBSIDIARIES. WITHOUT WRITTEN PERMISSION ANY COPYING, TRANSMITTAL TO OTHERS AND USE EXCEPT THAT FOR WHICH IT IS LOANED IS PROHIBITED. DESIGN SUBJECT TO CHANGE WITHOUT NOTICE.  
 ©2010 SIMPLEX, INC. ALL RIGHTS RESERVED.

<b>SIMPLEX</b>		SPRINGFIELD, ILLINOIS
SCALE :	APPROVED BY :	DRAWN BY : RER
DATE : 08-10-10		REVISED :
RELIANT 100 FUEL OIL DAY TANK PICTORIAL WITH SIDE BOX		
STANDARD	DRAWING NUMBER 211969	