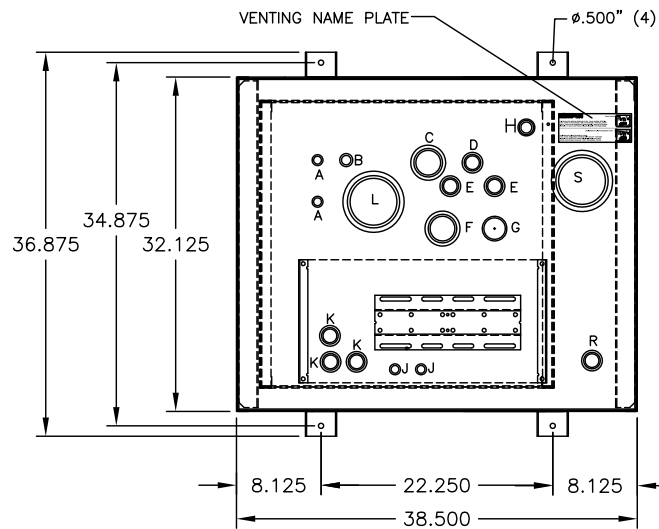


TANK FITTING SCHEDULE

PORT	DESCRIPTION	SIZE
A	ENGINE SUPPLY DROP TUBE	0.75" NPT, MALE
B	SIPHON DRAIN DROP TUBE	0.75" NPT, MALE
C	OVERFLOW PORT (NOT USED WITH RETURN PUMP)	2.00" NPT, FEMALE
D	ENGINE RETURN PORT	1.00" NPT, FEMALE
E	EXTRA PIPE FLANGE	1.00" NPT, FEMALE
F	TANK VENT PORT	2.00" NPT, FEMALE
G	MANUAL FILL DROP TUBE	2.00" NPT, MALE
H	HAND PUMP MOUNTING DROP TUBE	0.75" NPT, MALE
J	EXTRA DROP TUBE	0.75" NPT, MALE
K	FLOATSWITCH MTG/INSPECTION PORT	1.00" NPT, FEMALE
L	TANK EMERGENCY VENT	4.00" NPT, FEMALE
M	SECONDARY CONTAINMENT DRAIN	0.375" NPT, FEMALE
R	CONTAINMENT FLOATSWITCH MTG PORT	1.00" NPT, FEMALE
S	SECONDARY CONTAINMENT EMERGENCY VENT	4.00" NPT, FEMALE



TOP VIEW

OPTIONS INSTALLED

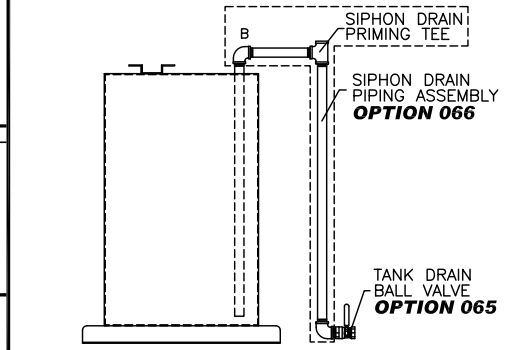
- X002-DELETION OF STD PUMP & MOTOR
- 015-MANUAL HAND PUMP
- 025-MANUAL FILL PIPE W/LOCKABLE CAP
- 060-FUEL STRAINER, Y-TYPE, 0.75" NPT., 40 MESH
- 064-EMERGENCY VENT, 2.5 P.S.I., 4.00" NPT.
- 065-TANK DRAIN BALL VALVE
- 066-SIPHON DRAIN PIPING ASSEMBLY
- 070-PRIMING TEE & CHECK VALVE ASSEMBLY
- 080-SOLENOID VALVE, N.C. 115VAC
- 088-FIRE RATED SHUT-OFF BALL VALVE .50"NPT
- 101-VACUUM GAUGE
- 191-FLOATSWITCH IN RUPTURE BASIN
- 192-RUPTURE BASIN DRAIN BALL VALVE

OPTIONS INSTALLED

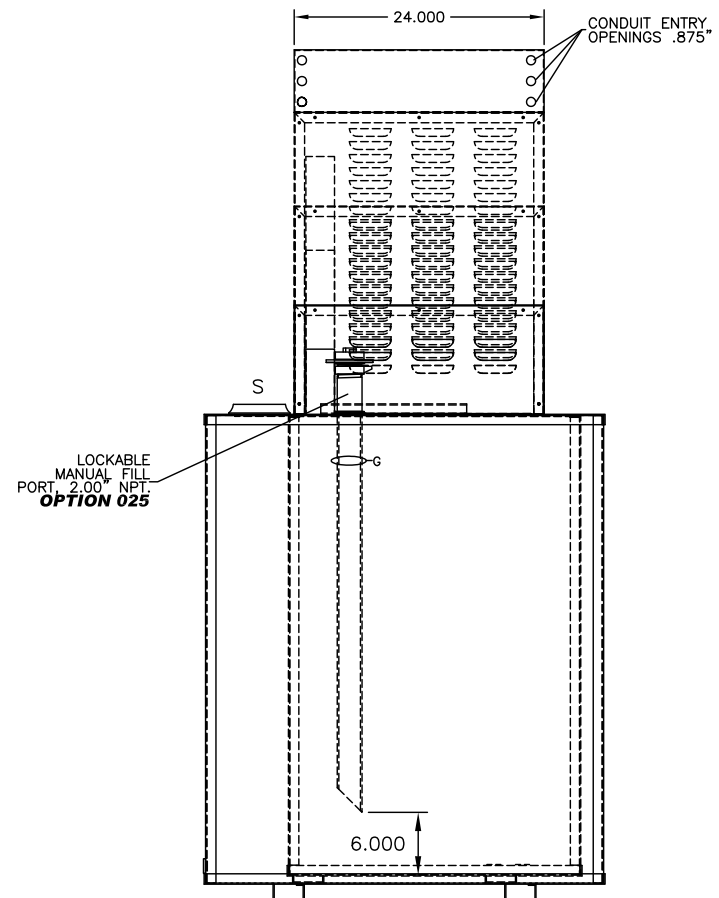
- 215-SPIRAL LEVEL GAUGE
- 270-POWER AVAILABLE PILOT LIGHT
- 280-PUMP RUN-OFF-AUTO SWITCH
- 311-LOW FUEL LEVEL ALARM
- 312-HIGH FUEL LEVEL ALARM
- 325-HIGH FUEL LEVEL PUMP STOP
- 340-PUMP RUNNING LIGHT
- 345-DUPLEX PUMP CONTROLLER
- 390-OVERFLOW RETURN PUMP & CONTROLLER

OPTIONS SHIPPED LOOSE

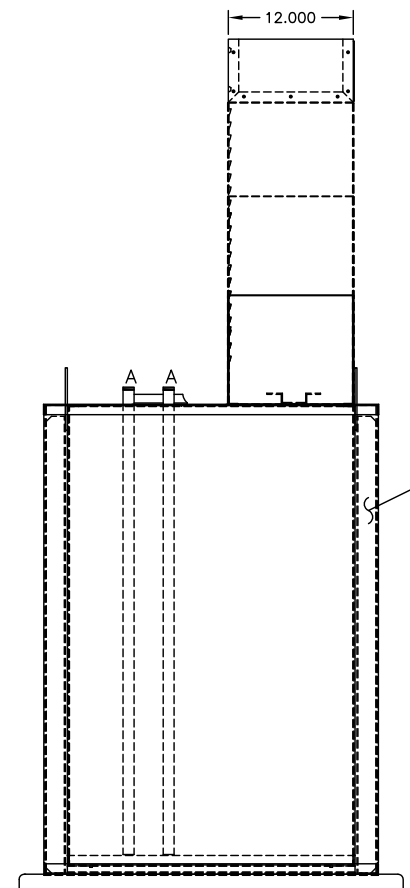
- 040-WALL MOUNTING BRACKET
- 061-FUEL STRAINER, Y-TYPE, 1.0" NPT, 40 MESH
- 063-VENT CAP
- 087-MANUAL SHUT-OFF BALL VALVE .50"NPT
- 088-MANUAL SHUT-OFF BALL VALVE 1.00"NPT
- 090-FOOT VALVE 1.00" NPT
- 093-FUSIBLE LINK VALVE 1.50" NPT
- 110-RELOCATION OF STD PUMP & MOTOR
- 377-ANTI-SIPHON SOLENOID VALVE, N.C. 120VAC



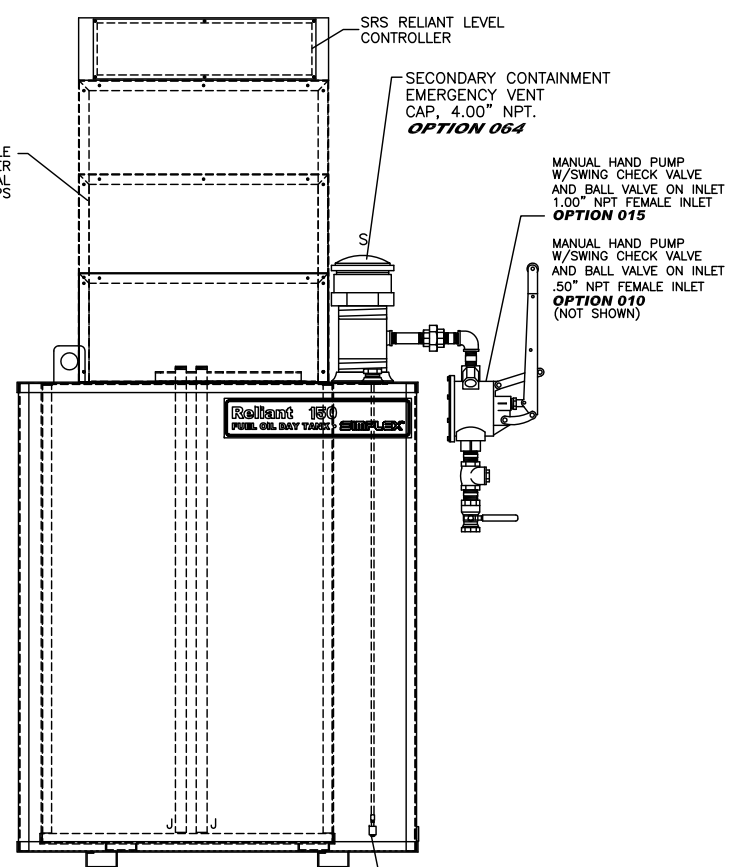
SIPHON DRAIN DETAIL



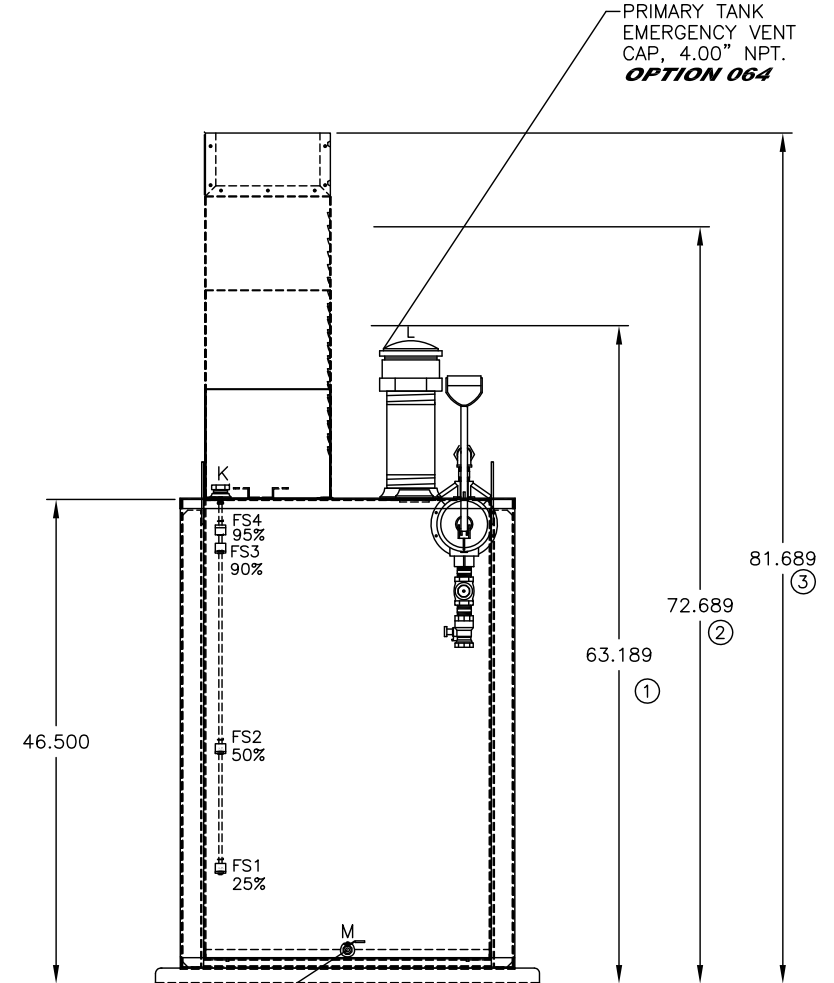
REAR VIEW



LEFT SIDE VIEW



FRONT VIEW



RIGHT SIDE VIEW

- NOTES:**
- CONSTRUCTION: 12 GA. H.R.S.
 - LISTING: UL 142**
 - RATING: ATMOSPHERIC TANK TESTED TO 3 PSI
 - FINISH: TANK POWDER COATED BONE WHITE
EQUIPMENT COVER POWDER COATED BONE WHITE
 - DUE TO SYSTEM COMPLEXITY, SOME COMPONENTS MAY NOT BE VISIBLE IN ALL VIEWS
 - ALL DIMENSIONS ±.125"

DAY TANK SHOWN WITH STANDARD CONTROL SECTION AND OPTIONAL DUPLEX PUMP/LARGE PUMP SECTION SEE TANK HEIGHT DETAIL.

THE INFORMATION HEREON IS THE PROPERTY OF SIMPLEX, INC., AND/OR ITS SUBSIDIARIES. WITHOUT WRITTEN PERMISSION ANY COPYING, TRANSMITTAL TO OTHERS AND USE EXCEPT THAT FOR WHICH IT IS LOANED IS PROHIBITED. DESIGN SUBJECT TO CHANGE WITHOUT NOTICE. ©2010 SIMPLEX, INC. ALL RIGHTS RESERVED.

SIMPLEX		SPRINGFIELD, ILLINOIS
SCALE :	APPROVED BY :	DRAWN BY : RER
DATE : 08-10-10		REVISED :
RELIANT 150 FUEL OIL DAY TANK PICTORIAL		
STANDARD		DRAWING NUMBER 211970