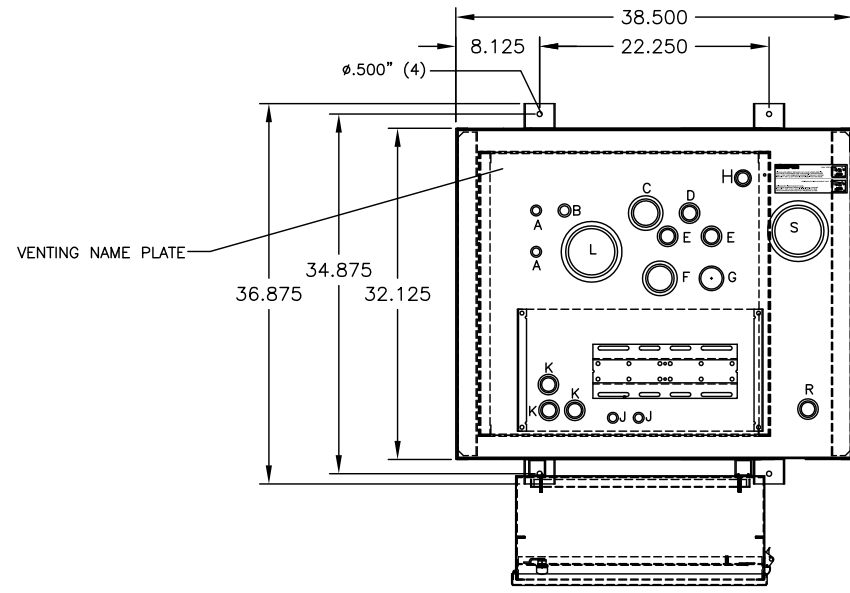


TANK FITTING SCHEDULE

PORT	DESCRIPTION	SIZE
A	ENGINE SUPPLY DROP TUBE	0.75" NPT, MALE
B	SIPHON DRAIN DROP TUBE	0.75" NPT, MALE
C	OVERFLOW PORT (NOT USED WITH RETURN PUMP)	2.00" NPT, FEMALE
D	ENGINE RETURN PORT	1.00" NPT, FEMALE
E	EXTRA PIPE FLANGE	1.00" NPT, FEMALE
F	TANK VENT PORT	2.00" NPT, FEMALE
G	MANUAL FILL DROP TUBE	2.00" NPT, MALE
H	HAND PUMP MOUNTING DROP TUBE	0.75" NPT, MALE
J	EXTRA DROP TUBE	0.75" NPT, MALE
K	FLOATSWITCH MTG/INSPECTION PORT	1.00" NPT, FEMALE
L	TANK EMERGENCY VENT	4.00" NPT, FEMALE
M	SECONDARY CONTAINMENT DRAIN	0.375" NPT, FEMALE
R	CONTAINMENT FLOATSWITCH MTG PORT	1.00" NPT, FEMALE
S	SECONDARY CONTAINMENT EMERGENCY VENT	4.00" NPT, FEMALE

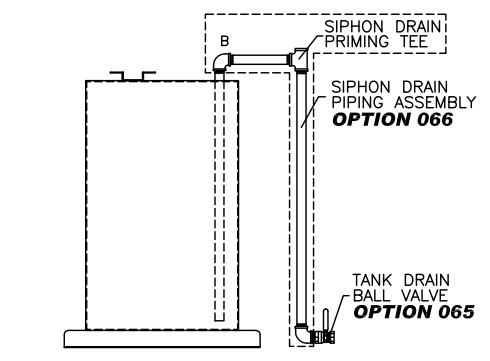


TOP VIEW

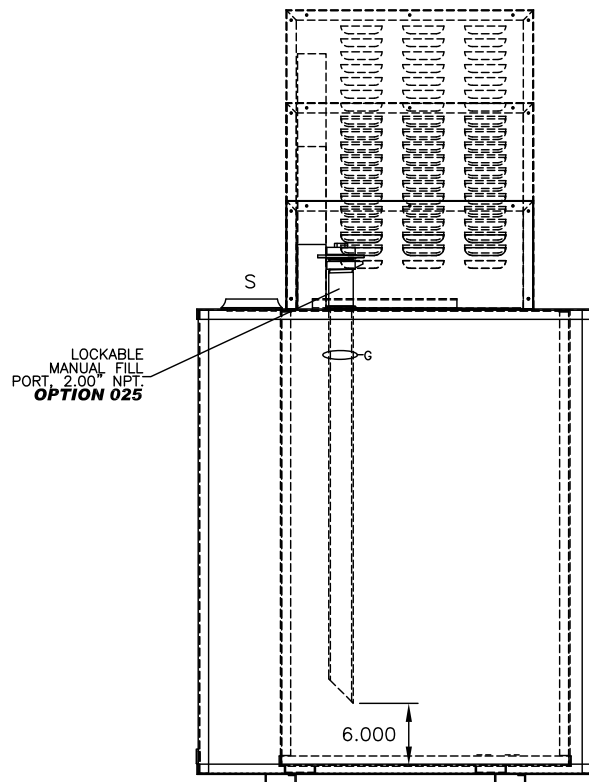
OPTIONS INSTALLED	
<input type="checkbox"/>	X002-DELETION OF STD PUMP & MOTOR
<input type="checkbox"/>	015-MANUAL HAND PUMP
<input type="checkbox"/>	025-MANUAL FILL PIPE W/LOCKABLE CAP
<input type="checkbox"/>	060-FUEL STRAINER, Y-TYPE, 0.75" NPT., 40 MESH
<input type="checkbox"/>	064-EMERGENCY VENT, 2.5 P.S.I., 4.00" NPT.
<input type="checkbox"/>	065-TANK DRAIN BALL VALVE
<input type="checkbox"/>	066-SIPHON DRAIN PIPING ASSEMBLY
<input type="checkbox"/>	070-PRIMING TEE & CHECK VALVE ASSEMBLY
<input type="checkbox"/>	080-SOLENOID VALVE, N.C. 115VAC
<input type="checkbox"/>	088-FIRE RATED SHUT-OFF BALL VALVE .50"NPT
<input type="checkbox"/>	101-VACUUM GAUGE
<input type="checkbox"/>	191-FLOATSWITCH IN RUPTURE BASIN
<input type="checkbox"/>	192-RUPTURE BASIN DRAIN BALL VALVE

OPTIONS INSTALLED	
<input type="checkbox"/>	215- SPIRAL LEVEL GAUGE
<input type="checkbox"/>	270- POWER AVAILABLE PILOT LIGHT
<input type="checkbox"/>	280- PUMP RUN-OFF-AUTO SWITCH
<input type="checkbox"/>	311-LOW FUEL LEVEL ALARM
<input type="checkbox"/>	312-HIGH FUEL LEVEL ALARM
<input type="checkbox"/>	325-HIGH FUEL LEVEL PUMP STOP
<input type="checkbox"/>	340- PUMP RUNNING LIGHT
<input type="checkbox"/>	345- DUPLEX PUMP CONTROLLER
<input type="checkbox"/>	390-OVERFLOW RETURN PUMP & CONTROLLER

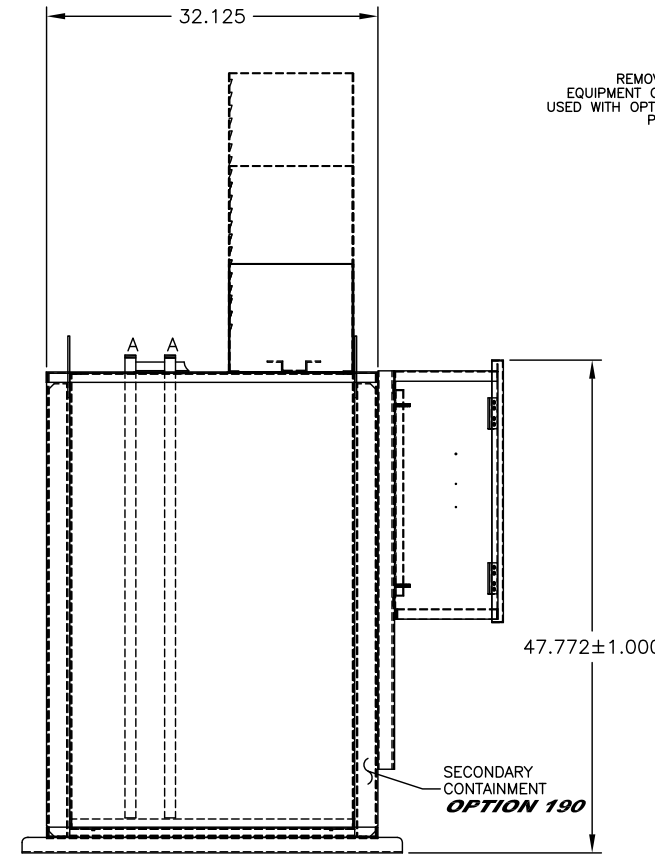
OPTIONS SHIPPED LOOSE	
<input type="checkbox"/>	040- WALL MOUNTING BRACKET
<input type="checkbox"/>	061- FUEL STRAINER, Y-TYPE, 1.0" NPT, 40 MESH
<input type="checkbox"/>	063- VENT CAP
<input type="checkbox"/>	087- MANUAL SHUT-OFF BALL VALVE .50"NPT
<input type="checkbox"/>	088- MANUAL SHUT-OFF BALL VALVE 1.00"NPT
<input type="checkbox"/>	090- FOOT VALVE 1.00" NPT
<input type="checkbox"/>	093- FUSIBLE LINK VALVE 1.50" NPT
<input type="checkbox"/>	110-RELOCATION OF STD PUMP & MOTOR
<input type="checkbox"/>	377- ANTI-SIPHON SOLENOID VALVE, N.C. 120VAC



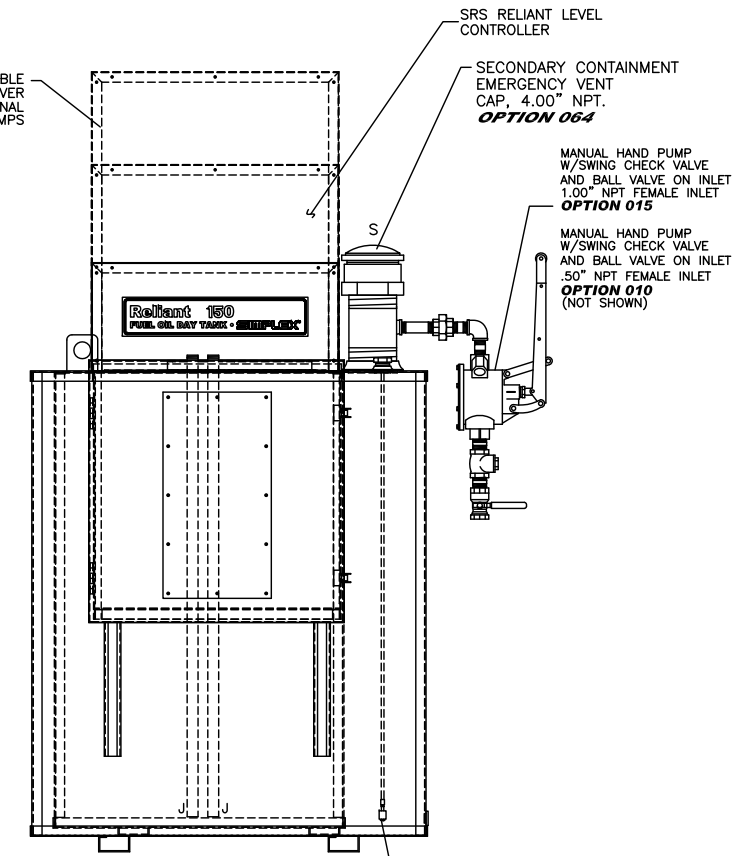
SIPHON DRAIN DETAIL



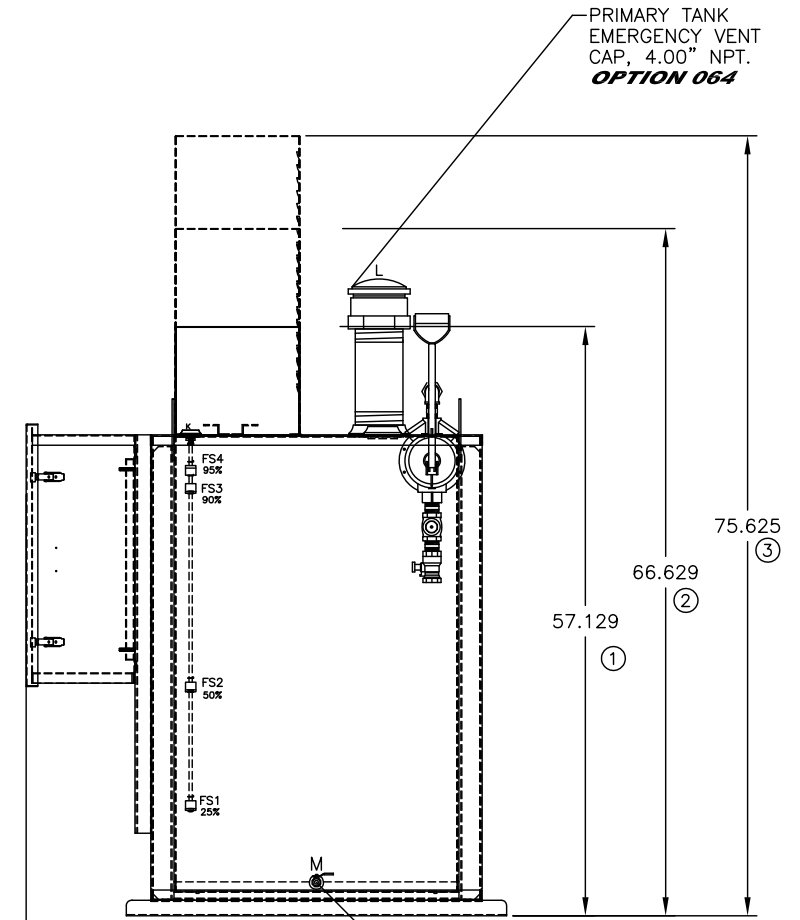
REAR VIEW



LEFT SIDE VIEW



FRONT VIEW



RIGHT SIDE VIEW

NOTES:

- CONSTRUCTION: 12 GA. H.R.S.
- LISTING: UL 142**
- RATING: ATMOSPHERIC TANK TESTED TO 3 PSI
- FINISH: TANK POWDER COATED BONE WHITE
EQUIPMENT COVER POWDER COATED BONE WHITE
- DUE TO SYSTEM COMPLEXITY, SOME COMPONENTS MAY NOT BE VISIBLE IN ALL VIEWS
- ALL DIMENSIONS ±.125"

DAY TANK SHOWN WITH STANDARD CONTROL SECTION AND OPTIONAL DUPLEX PUMP/LARGE PUMP SECTION SEE TANK HEIGHT DETAIL.

THE INFORMATION HEREON IS THE PROPERTY OF SIMPLEX, INC., AND/OR ITS SUBSIDIARIES. WITHOUT WRITTEN PERMISSION ANY COPYING, TRANSMITTAL TO OTHERS AND USE EXCEPT THAT FOR WHICH IT IS LOANED IS PROHIBITED. DESIGN SUBJECT TO CHANGE WITHOUT NOTICE.
©2010 SIMPLEX, INC. ALL RIGHTS RESERVED.

SIMPLEX		SPRINGFIELD, ILLINOIS
SCALE :	APPROVED BY :	DRAWN BY : RER
DATE : 08-10-10		REVISED :
RELIANT 150 FUEL OIL DAY TANK PICTORIAL WITH SIDE BOX		DRAWING NUMBER
STANDARD		211971