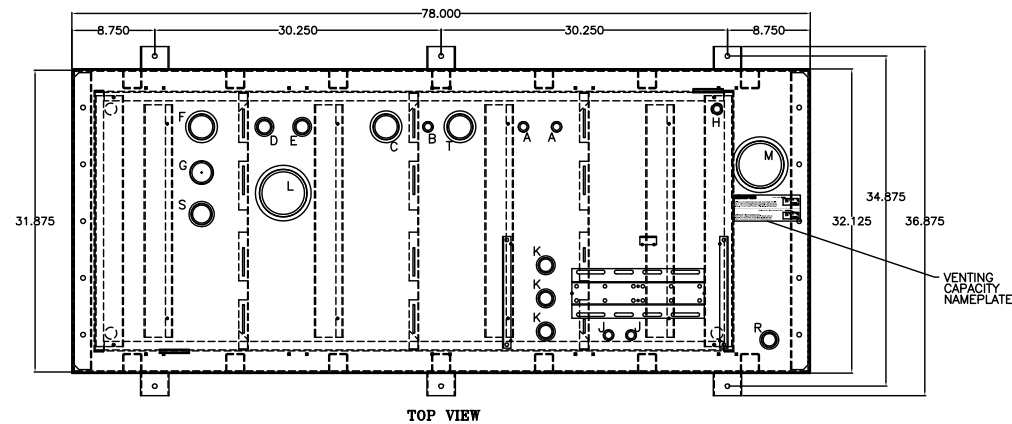
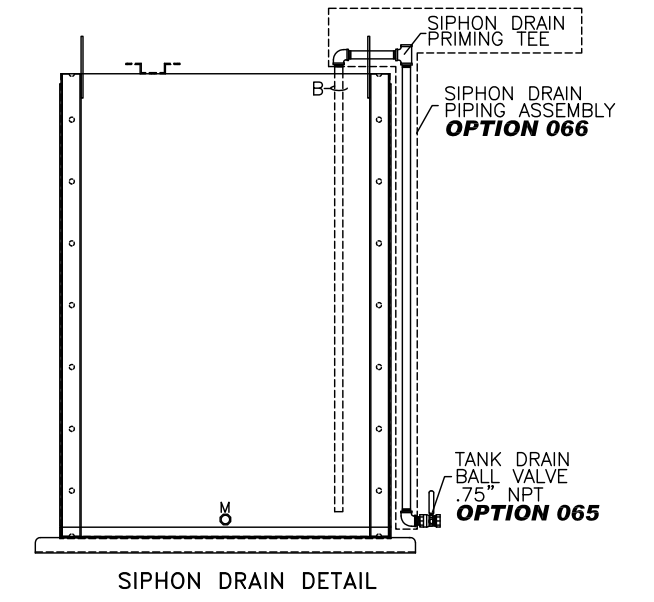


PORT	DESCRIPTION	SIZE
A	ENGINE SUPPLY DROP TUBE	0.75" NPT, MALE
B	SIPHON DRAIN DROP TUBE	0.75" NPT, MALE
C	OVERFLOW PORT (NOT USED WITH RETURN PORT)	2.00" NPT, FEMALE
D	ENGINE RETURN PORT	1.00" NPT, FEMALE
E	EXTRA PIPE FLANGE	1.00" NPT, FEMALE
F	TANK VENT PORT	2.00" NPT, FEMALE
G	MANUAL FILL PORT	2.00" NPT, MALE
H	HAND PUMP DROP TUBE	0.75" NPT, MALE
J	PUMP DROP TUBE	0.75" NPT, MALE
K	SST FLOATSWITCH	1.00" NPT, FEMALE
L	TANK EMERGENCY VENT	4.00" NPT, FEMALE
M	SECONDARY CONTAINMENT EMERGENCY VENT	4.00" NPT, FEMALE
R	LEAK SENSOR PORT	1.00" NPT, FEMALE
S	SIGHT GAUGE MTG. PORT	1.50" NPT, FEMALE
T	EXTRA PORT	2.00" NPT, FEMALE
U	CONTAINMENT DRAIN	0.375" NPT, FEMALE

- NOTES:
- CONSTRUCTION: 12 GA. H.R.S.
  - LISTING: UL 142**
  - RATING: ATMOSPHERIC TANK  
TESTED TO 3 PSI
  - FINISH: TANK PRIMED AND FINISHED PAINTED  
ASA 61 GRAY  
EQUIPMENT COVER  
POWDER COATED BONE WHITE
  - DUE TO SYSTEM COMPLEXITY, SOME  
COMPONENTS MAY NOT BE VISIBLE IN ALL VIEWS
  - ALL DIMENSIONS ±.125"

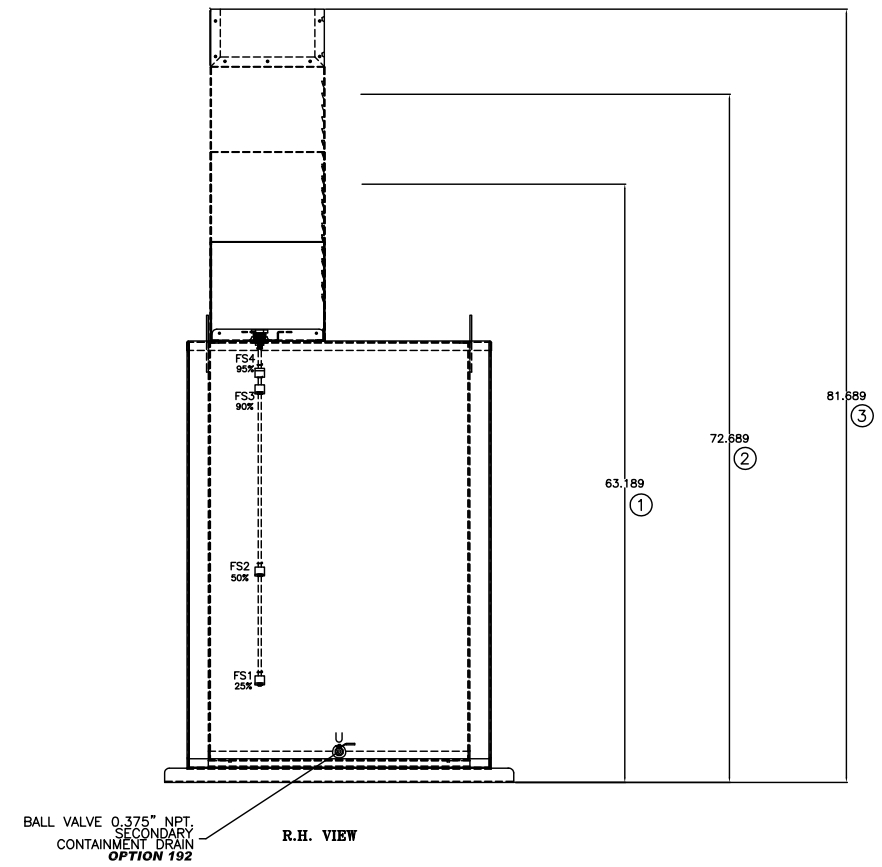
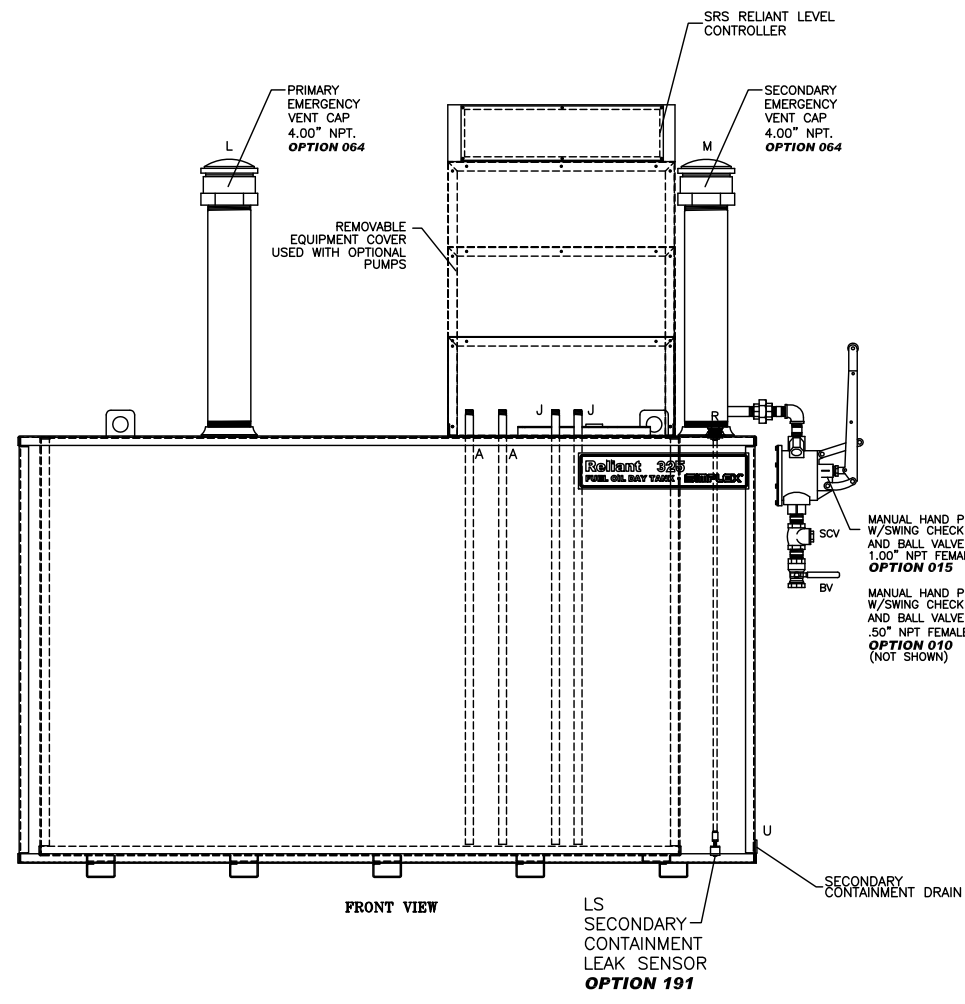
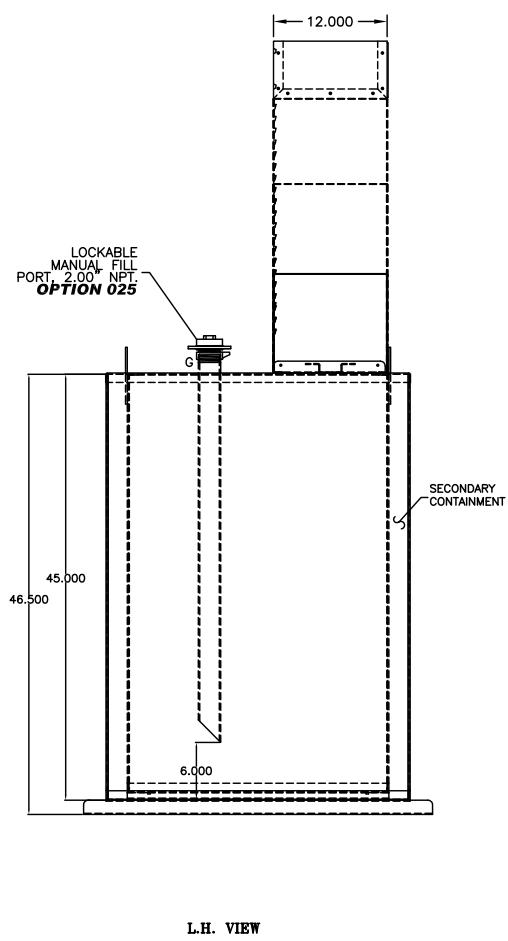


- OPTIONS INSTALLED
- X002-DELETION OF STD PUMP & MOTOR
  - 015-MANUAL HAND PUMP
  - 025-MANUAL FILL PIPE W/LOCKABLE CAP
  - 060-FUEL STRAINER, Y-TYPE, 0.75" NPT., 40 MESH
  - 064-EMERGENCY VENT, 2.5 P.S.I., 4.00" NPT.
  - 065-TANK DRAIN BALL VALVE
  - 066-SIPHON DRAIN PIPING ASSEMBLY
  - 070-PRIMING TEE & CHECK VALVE ASSEMBLY
  - 080-SOLENOID VALVE, N.C. 115VAC
  - 087-MANUAL SHUT-OFF BALL VALVE .75"NPT
  - 125-INLET DROP TUBE, 1.00" NPT.
  - 130-RETURN PORT, 2.00" NPT
  - 191-FLOATSWITCH IN RUPTURE BASIN
  - 192-RUPTURE BASIN DRAIN BALL VALVE
  - 215-MECHANICAL LEVEL GAUGE
  - 270-POWER AVAILABLE PILOT LIGHT
  - 280-PUMP RUN-OFF-AUTO SWITCH
  - 311-LOW FUEL LEVEL ALARM
  - 312-HIGH FUEL LEVEL ALARM
  - 325-HIGH FUEL LEVEL PUMP STOP
  - 333-CRITICAL LOW FUEL ALARM
  - 340-PUMP RUNNING AMBER LIGHT
  - 345-DUPLEX PUMP CONTROLLER
  - 390-RETURN PUMP & CONTROLLER
  - 400-FILL PUMP, 7 G.P.M.
  - 721-FILL PUMP/MOTOR, 0.50 H.P., 460VAC,3#,60HZ
  - 400-RETURN PUMP, 7 G.P.M.
  - 721-RETURN PUMP/MOTOR, 0.50 H.P., 460VAC,3#,60HZ
  - HIGH TOP USED W/ SINGLE PUMP 3/4 H.P. OR DUPLEX PUMPS/MOTORS
  - TC-25-DIGITAL LEVEL TRANSDUCER WITH METER



DAY TANK SHOWN WITH STANDARD CONTROL SECTION AND OPTIONAL DUPLEX PUMP/LARGE PUMP SECTION SEE TANK HEIGHT DETAIL.

- OPTIONS SHIPPED LOOSE
- 061-FUEL STRAINER, Y-TYPE, 1.0" NPT, 40 MESH
  - 063-VENT CAP
  - 087-MANUAL SHUT-OFF BALL VALVE .50"NPT
  - 088-MANUAL SHUT-OFF BALL VALVE 1.00"NPT
  - 090-FOOT VALVE 1.00" NPT
  - 093-FUSIBLE LINK VALVE 1.50" NPT
  - 110-RELOCATION OF STD PUMP & MOTOR
  - 377-ANTI-SIPHON SOLENOID VALVE, N.O. 120VAC



THE INFORMATION HEREON IS THE PROPERTY OF SIMPLEX, INC., AND/OR ITS SUBSIDIARIES. WITHOUT WRITTEN PERMISSION ANY COPYING, TRANSMITTAL TO OTHERS AND USE EXCEPT THAT FOR WHICH IT IS LOANED IS PROHIBITED. DESIGN SUBJECT TO CHANGE WITHOUT NOTICE. ©2010 SIMPLEX, INC. ALL RIGHTS RESERVED.

<b>SIMPLEX</b>		SPRINGFIELD, ILLINOIS
SCALE :	APPROVED BY :	DRAWN BY : RER
DATE : 08-10-10		REVISED :
RELIANT 325 FUEL OIL DAY TANK PICTORIAL		
STANDARD	DRAWING NUMBER 211976	