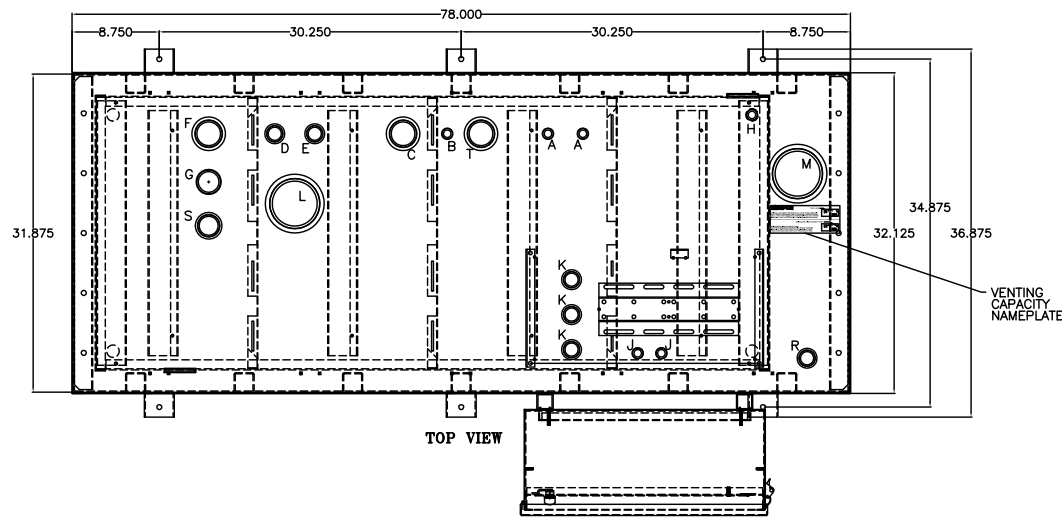


PORT	DESCRIPTION	SIZE
A	ENGINE SUPPLY DROP TUBE	0.75" NPT, MALE
B	SIPHON DRAIN DROP TUBE	0.75" NPT, MALE
C	OVERFLOW PORT (NOT USED WITH RETURN PORT)	2.00" NPT, FEMALE
D	ENGINE RETURN PORT	1.00" NPT, FEMALE
E	EXTRA PIPE FLANGE	1.00" NPT, FEMALE
F	TANK VENT PORT	2.00" NPT, FEMALE
G	MANUAL FILL PORT	2.00" NPT, MALE
H	HAND PUMP DROP TUBE	0.75" NPT, MALE
J	PUMP DROP TUBE	0.75" NPT, MALE
K	SST FLOATSWITCH	1.00" NPT, FEMALE
L	TANK EMERGENCY VENT	4.00" NPT, FEMALE
M	SECONDARY CONTAINMENT EMERGENCY VENT	4.00" NPT, FEMALE
R	LEAK SENSOR PORT	1.00" NPT, FEMALE
S	SIGHT GAUGE MTG. PORT	1.50" NPT, FEMALE
T	EXTRA PORT	2.00" NPT, FEMALE
U	CONTAINMENT DRAIN	0.375" NPT, FEMALE

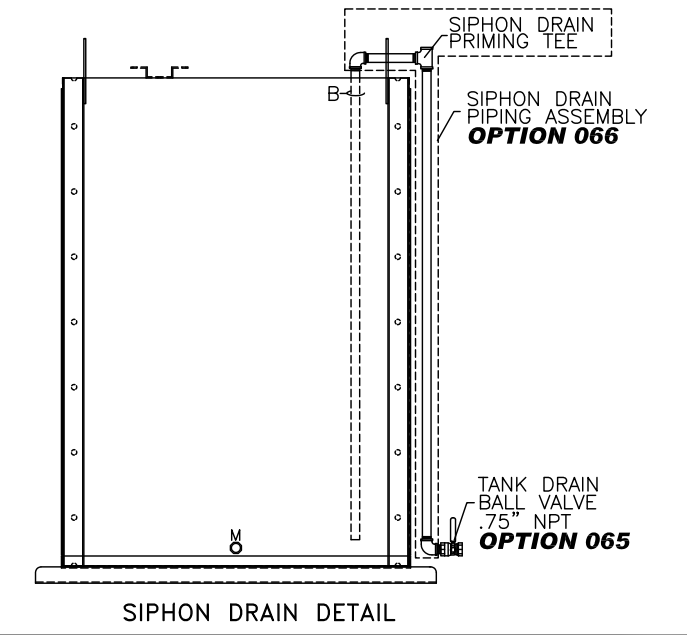
NOTES:

- 1) CONSTRUCTION: 12 GA. H.R.S.
- 2) LISTING: UL 142
- 3) RATING: ATMOSPHERIC TANK TESTED TO 3 PSI
- 4) FINISH: TANK PRIMED AND FINISH PAINTED ASA 61 GRAY
EQUIPMENT COVER POWDER COATED BONE WHITE
- 5) DUE TO SYSTEM COMPLEXITY, SOME COMPONENTS MAY NOT BE VISIBLE IN ALL VIEWS
- 6) ALL DIMENSIONS ±.125"



OPTIONS INSTALLED

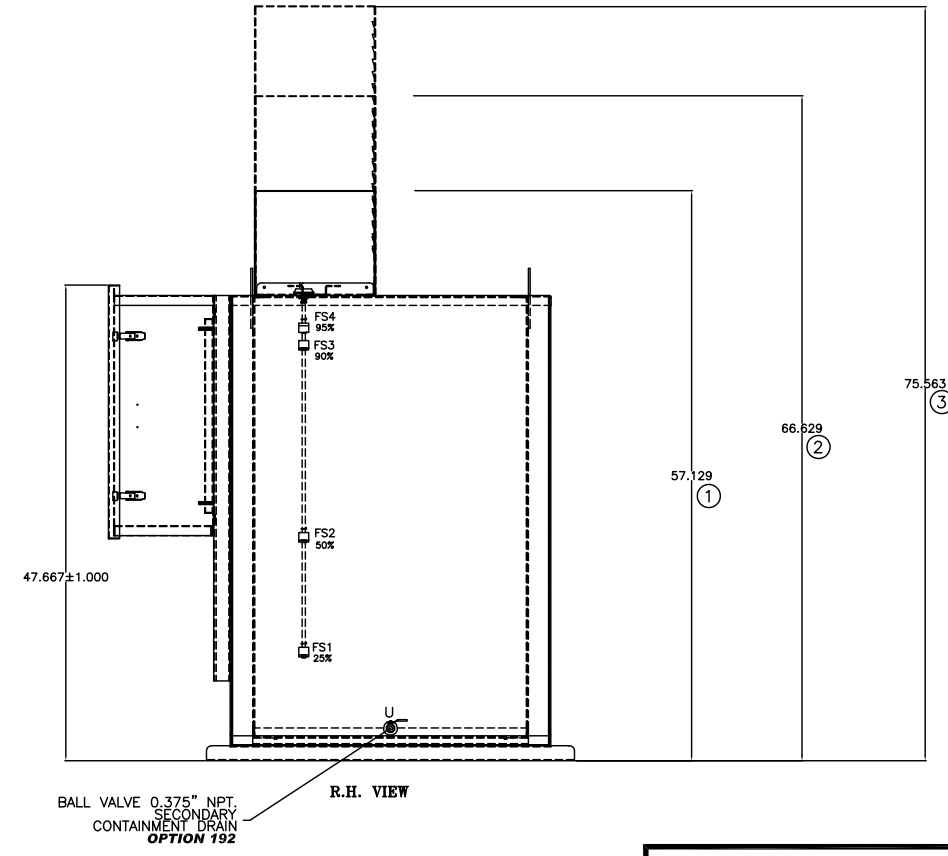
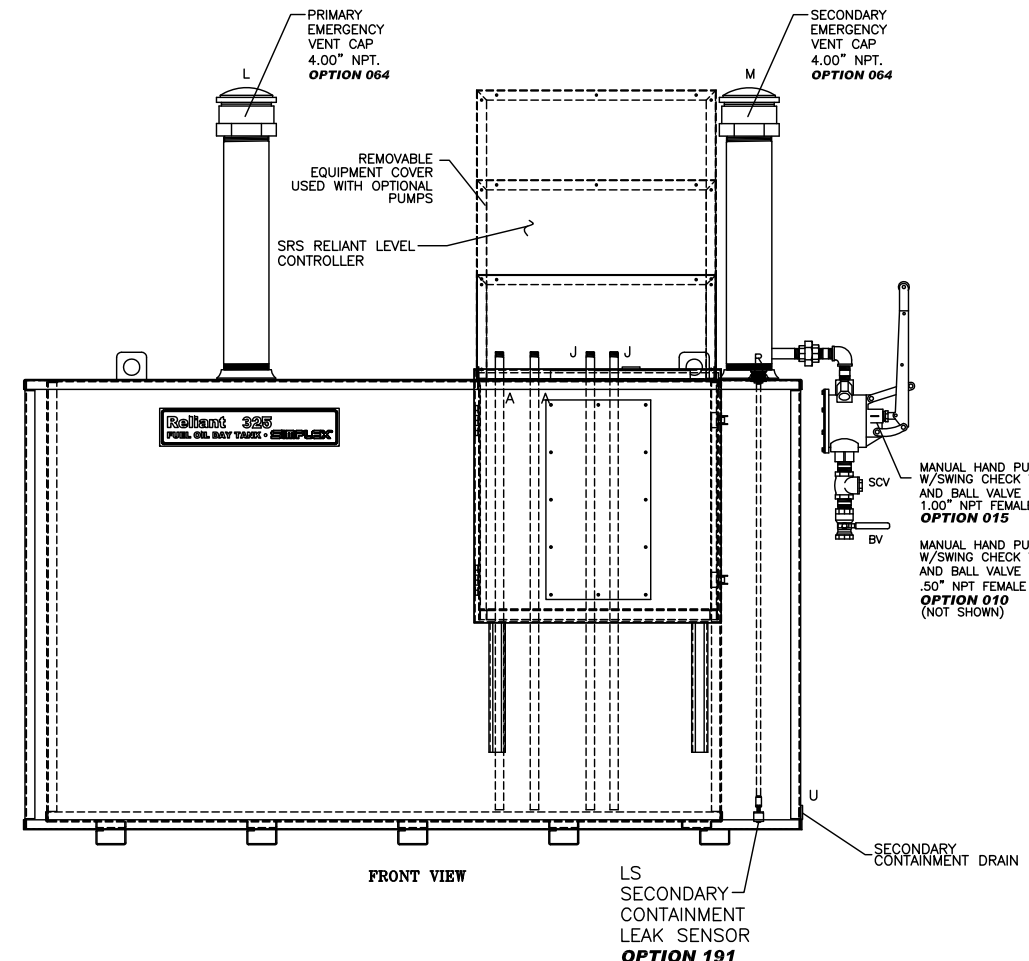
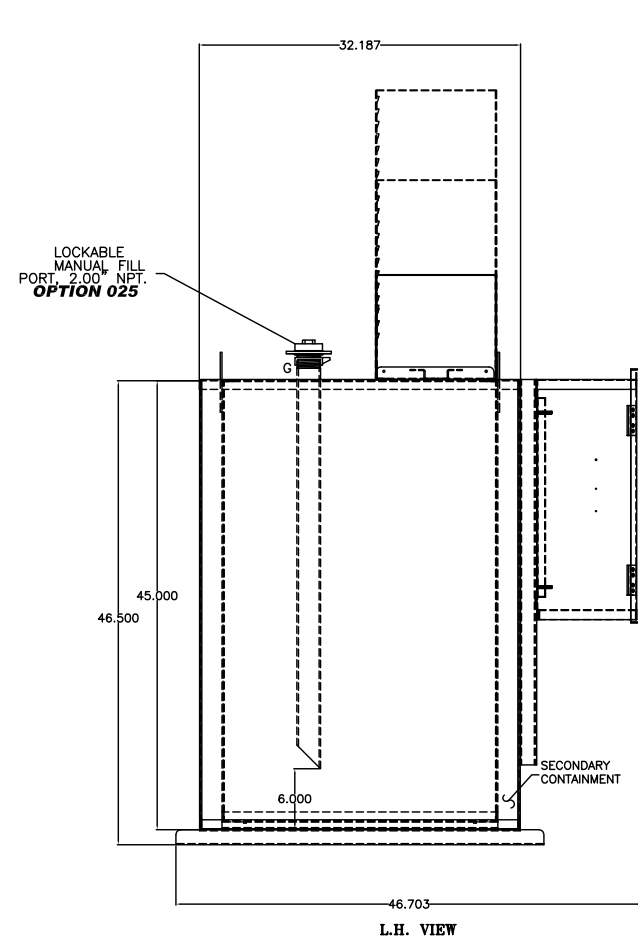
- X002-DELETION OF STD PUMP & MOTOR
- 015-MANUAL HAND PUMP
- 025-MANUAL FILL PIPE W/LOCKABLE CAP
- 060-FUEL STRAINER, Y-TYPE, 0.75" NPT., 40 MESH
- 064-EMERGENCY VENT, 2.5 P.S.I., 4.00" NPT.
- 065-TANK DRAIN BALL VALVE
- 066-SIPHON DRAIN PIPING ASSEMBLY
- 070-PRIMING TEE & CHECK VALVE ASSEMBLY
- 080-SOLENOID VALVE, N.C. 115VAC
- 087-MANUAL SHUT-OFF BALL VALVE .75"NPT
- 125-INLET DROP TUBE, 1.00" NPT.
- 130-RETURN PORT, 2.00" NPT
- 191-FLOATSWITCH IN RUPTURE BASIN
- 192-RUPTURE BASIN DRAIN BALL VALVE
- 215-MECHANICAL LEVEL GAUGE
- 270-POWER AVAILABLE PILOT LIGHT
- 280-PUMP RUN-OFF-AUTO SWITCH
- 311-LOW FUEL LEVEL ALARM
- 312-HIGH FUEL LEVEL ALARM
- 325-HIGH FUEL LEVEL PUMP STOP
- 333-CRITICAL LOW FUEL ALARM
- 340-PUMP RUNNING AMBER LIGHT
- 345-DUPLEX PUMP CONTROLLER
- 390-RETURN PUMP & CONTROLLER
- 400-FILL PUMP, 7 G.P.M.
- 721-FILL PUMP/MOTOR, 0.50 H.P., 460VAC,3ø,60HZ
- 400-RETURN PUMP, 7 G.P.M.
- 721-RETURN PUMP/MOTOR, 0.50 H.P., 460VAC,3ø,60HZ
- HIGH TOP USED W/ SINGLE PUMP 3/4 H.P. OR DUPLEX PUMPS/MOTORS
- TC-25-DIGITAL LEVEL TRANSDUCER WITH METER



DAY TANK SHOWN WITH STANDARD CONTROL SECTION AND OPTIONAL DUPLEX PUMP/LARGE PUMP SECTION SEE TANK HEIGHT DETAIL.

OPTIONS SHIPPED LOOSE

- 061-FUEL STRAINER, Y-TYPE, 1.0" NPT, 40 MESH
- 063-VENT CAP
- 087-MANUAL SHUT-OFF BALL VALVE .50"NPT
- 088-MANUAL SHUT-OFF BALL VALVE 1.00"NPT
- 090-FOOT VALVE 1.00" NPT
- 093-FUSIBLE LINK VALVE 1.50" NPT
- 110-RELOCATION OF STD PUMP & MOTOR
- 377-ANTI-SIPHON SOLENOID VALVE, N.O. 120VAC



THE INFORMATION HEREON IS THE PROPERTY OF SIMPLEX, INC., AND/OR ITS SUBSIDIARIES. WITHOUT WRITTEN PERMISSION ANY COPYING, TRANSMITTAL TO OTHERS AND USE EXCEPT THAT FOR WHICH IT IS LOANED IS PROHIBITED. DESIGN SUBJECT TO CHANGE WITHOUT NOTICE. ©2010 SIMPLEX, INC. ALL RIGHTS RESERVED.

SIMPLEX SPRINGFIELD, ILLINOIS

SCALE :	APPROVED BY :	DRAWN BY : RER
DATE : 08-10-10		REVISED :
RELIANT 325 FUEL OIL DAY TANK PICTORIAL WITH SIDE BOX		
STANDARD	DRAWING NUMBER 211977	