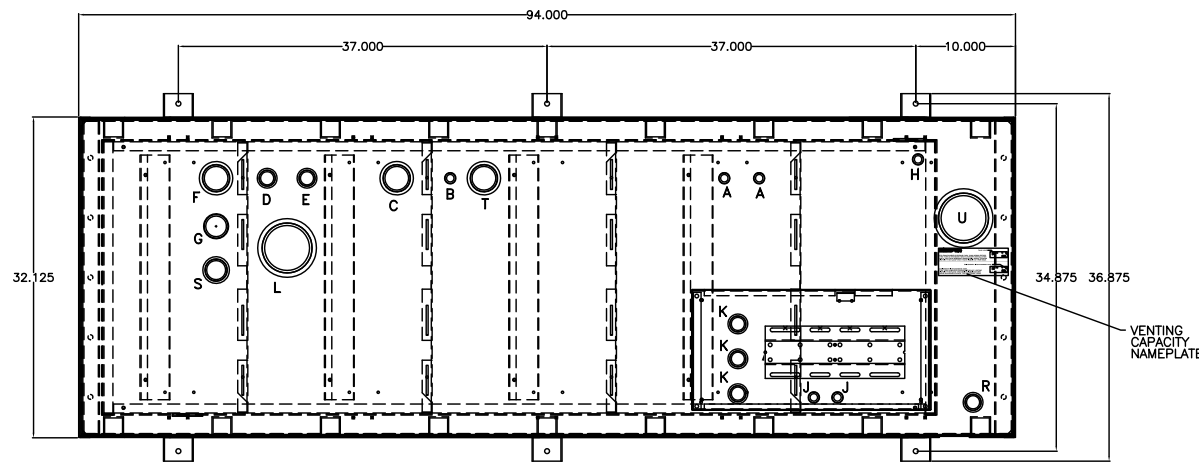
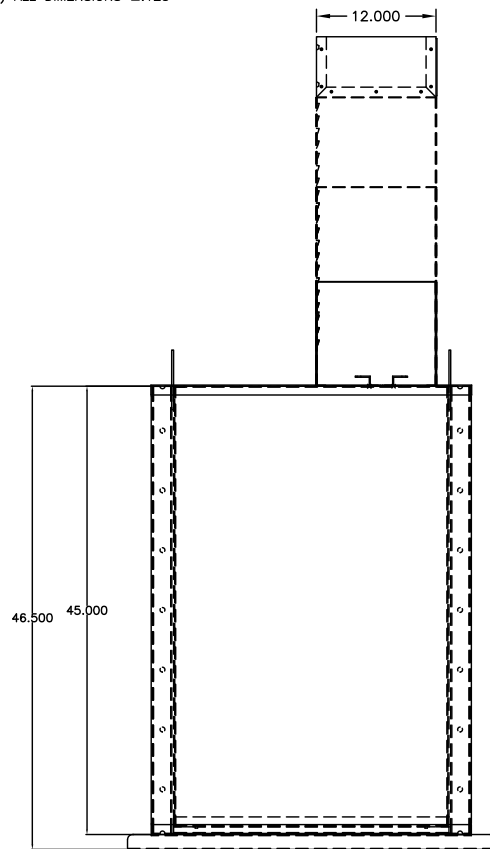


PORT	DESCRIPTION	SIZE
A	ENGINE SUPPLY DROP TUBE (1.000 CLEARANCE TO BOTTOM)	0.75" NPT, MALE
B	SIPHON DRAIN DROP TUBE (.250 CLEARANCE TO BOTTOM)	0.75" NPT, MALE
C	OVERFLOW PORT (NOT USED WITH RETURN PUMP)	2.00" NPT, FEMALE
D	ENGINE RETURN PORT	1.00" NPT, FEMALE
E	EXTRA PIPE FLANGE	1.00" NPT, FEMALE
F	TANK VENT PORT	2.00" NPT, FEMALE
G	MANUAL FILL PORT (6.000 CLEARANCE TO BOTTOM)	2.00" NPT, MALE
J	PUMP DROP TUBE (1.000 CLEARANCE TO BOTTOM)	0.75" NPT, MALE
K	FLOAT SWITCH PORT	1.00" NPT, FEMALE
L	TANK EMERGENCY VENT	4.00" NPT, FEMALE
M	SECONDARY CONTAINMENT DRAIN	0.375" NPT, FEMALE
R	LEAK SENSOR PORT	1.00" NPT, FEMALE
S	SIGHT GAUGE MOUNTING PORT	1.50" NPT, FEMALE
T	EXTRA PORT	2.00" NPT, FEMALE
U	SECONDARY CONTAINMENT EMERGENCY VENT	4.00" NPT, FEMALE

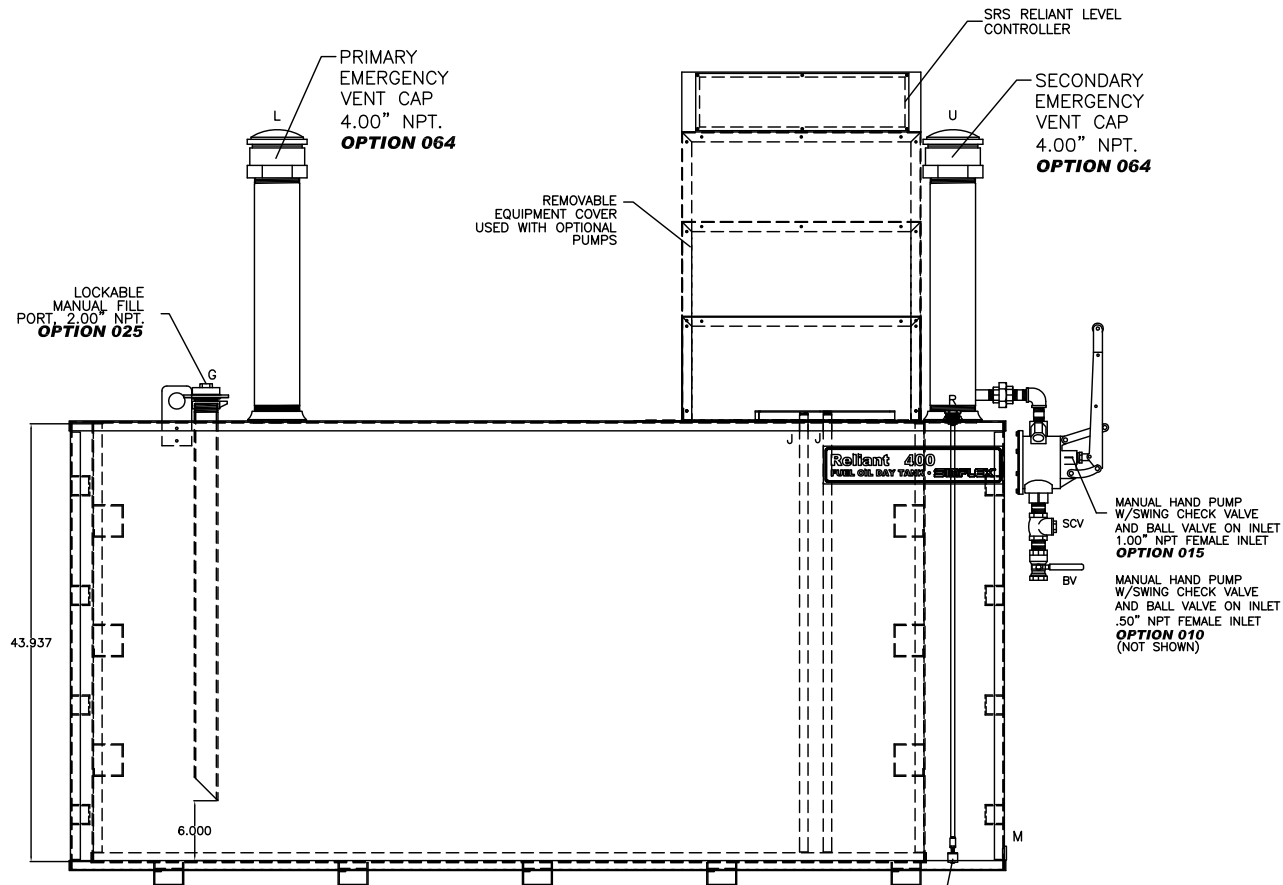


TOP VIEW

- NOTES:
- 1) CONSTRUCTION: 12 GA. H.R.S.
 - 2) LISTING: UL 142
 - 3) RATING: ATMOSPHERIC TANK
TESTED TO 3 PSI
 - 4) FINISH: TANK PRIMED AND FINISHED PAINTED
ASA 61 GRAY
EQUIPMENT COVER
POWDER COATED BONE WHITE
 - 5) DUE TO SYSTEM COMPLEXITY, SOME
COMPONENTS MAY NOT BE VISIBLE IN ALL VIEWS
 - 6) ALL DIMENSIONS ±.125"



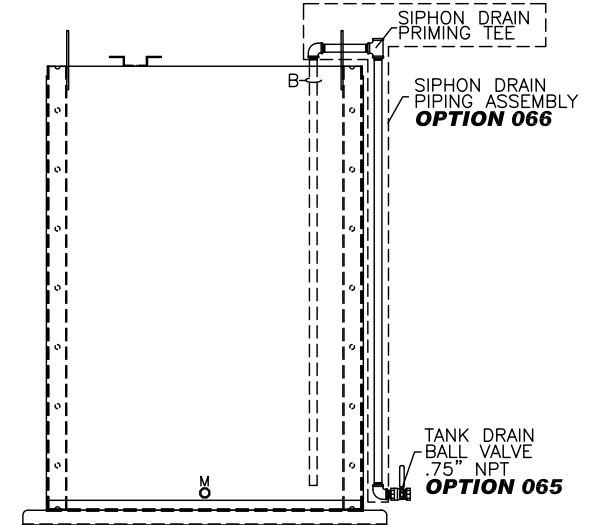
LEFT VIEW



FRONT VIEW

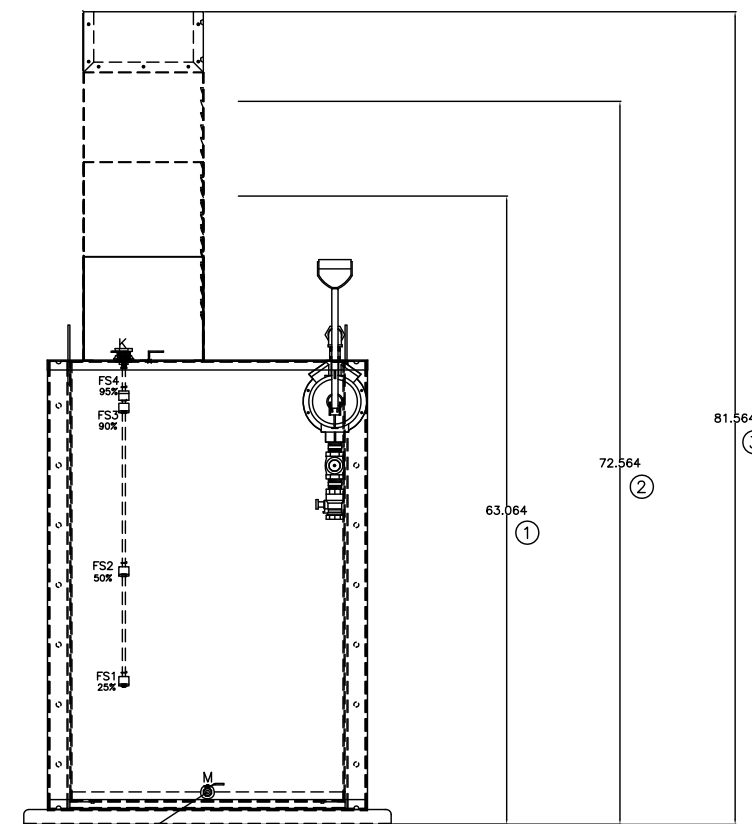
LS
SECONDARY
CONTAINMENT
LEAK SENSOR
OPTION 191

- OPTIONS INSTALLED
- X002-DELETION OF STD PUMP & MOTOR
 - 015-MANUAL HAND PUMP
 - 025-MANUAL FILL PIPE W/LOCKABLE CAP
 - 060-FUEL STRAINER, Y-TYPE, 0.75" NPT., 40 MESH
 - 064-EMERGENCY VENT, 2.5 P.S.I., 4.00" NPT.
 - 065-TANK DRAIN BALL VALVE
 - 066-SIPHON DRAIN PIPING ASSEMBLY
 - 070-PRIMING TEE & CHECK VALVE ASSEMBLY
 - 080-SOLENOID VALVE, N.C. 115VAC
 - 087-MANUAL SHUT-OFF BALL VALVE .75"NPT
 - 125-INLET DROP TUBE, 1.00" NPT.
 - 130-RETURN PORT, 2.00" NPT
 - 191-FLOATSWITCH IN RUPTURE BASIN
 - 192-RUPTURE BASIN DRAIN BALL VALVE
 - 215-MECHANICAL LEVEL GAUGE
 - 270-POWER AVAILABLE PILOT LIGHT
 - 280-PUMP RUN-OFF-AUTO SWITCH
 - 311-LOW FUEL LEVEL ALARM
 - 312-HIGH FUEL LEVEL ALARM
 - 325-HIGH FUEL LEVEL PUMP STOP
 - 333-CRITICAL LOW FUEL ALARM
 - 340-PUMP RUNNING AMBER LIGHT
 - 345-DUPLEX PUMP CONTROLLER
 - 390-RETURN PUMP & CONTROLLER
 - 400-FILL PUMP, 7 G.P.M.
 - 721-FILL PUMP/MOTOR, 0.50 H.P., 460VAC,3#,60HZ
 - 400-RETURN PUMP, 7 G.P.M.
 - 721-RETURN PUMP/MOTOR, 0.50 H.P., 460VAC,3#,60HZ
 - HIGH TOP USED W/ SINGLE PUMP 3/4 H.P. OR
DUPLEX PUMPS/MOTORS



SIPHON DRAIN DETAIL

- OPTIONS SHIPPED LOOSE
- 061-FUEL STRAINER, Y-TYPE, 1.0" NPT, 40 MESH
 - 063-VENT CAP
 - 087-MANUAL SHUT-OFF BALL VALVE .50"NPT
 - 088-MANUAL SHUT-OFF BALL VALVE 1.00"NPT
 - 090-FOOT VALVE 1.00" NPT
 - 093-FUSIBLE LINK VALVE 1.50" NPT
 - 110-RELOCATION OF STD PUMP & MOTOR
 - 377-ANTI-SIPHON SOLENOID VALVE, N.O. 120VAC



RIGHT VIEW

BALL VALVE 0.375" NPT,
SECONDARY
CONTAINMENT DRAIN
OPTION 192

THE INFORMATION HEREON IS THE PROPERTY OF SIMPLEX, INC., AND/OR ITS SUBSIDIARIES. WITHOUT WRITTEN PERMISSION ANY COPYING, TRANSMITTAL TO OTHERS AND USE EXCEPT THAT FOR WHICH IT IS LOANED IS PROHIBITED. DESIGN SUBJECT TO CHANGE WITHOUT NOTICE. ©2010 SIMPLEX, INC. ALL RIGHTS RESERVED.

DAY TANK SHOWN WITH STANDARD CONTROL SECTION AND OPTIONAL DUPLEX PUMP/LARGE PUMP SECTION SEE TANK HEIGHT DETAIL.

SIMPLEX		SPRINGFIELD, ILLINOIS
SCALE :	APPROVED BY :	DRAWN BY : RER
DATE : 08-10-10		REVISED :
RELIANT 400 FUEL OIL DAY TANK PICTORIAL		
STANDARD	DRAWING NUMBER 211978	