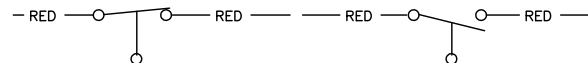
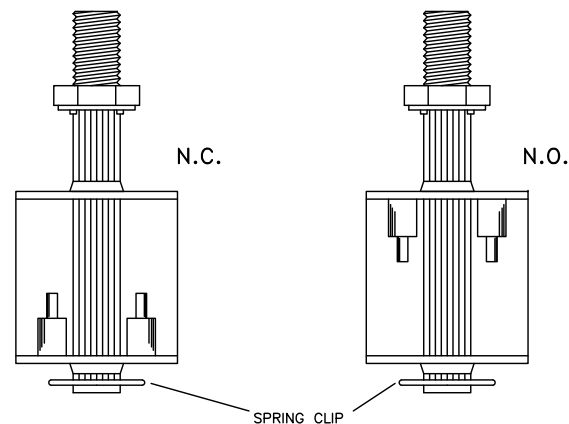


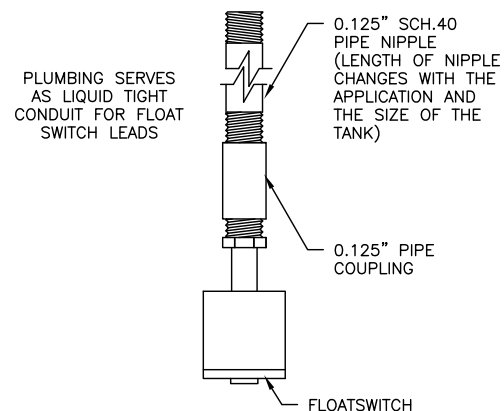
**NOTE:**

SWITCH LOGIC CHANGED BY REVERSING FLOAT.

1. REMOVE SPRING CLIP FROM BOTTOM OF FLOAT.
2. REMOVE FLOAT FROM STEM AND TURN FLOAT UPSIDE-DOWN
3. REINSTALL FLOAT ON STEM AND REPLACE SPRING CLIP.



TYPICAL VERTICAL FLOATSWITCH PLUMBING ASSEMBLY



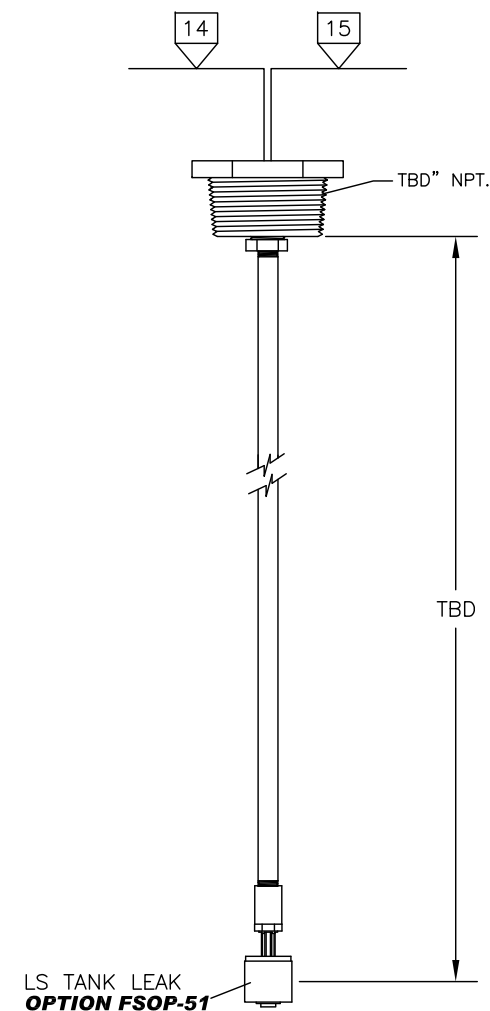
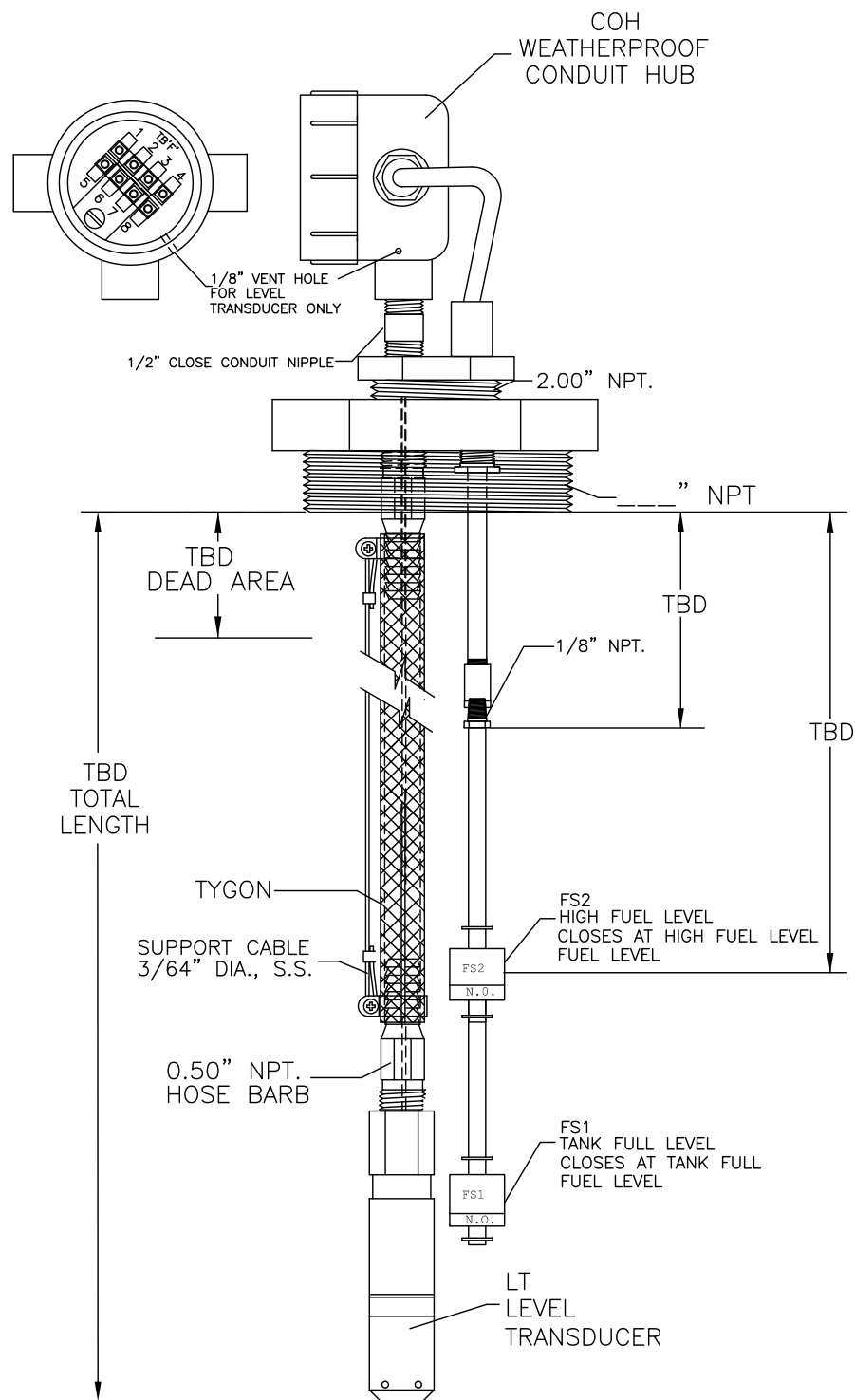
**CALIBRATED FOR PERCENT LEVEL**



**WARNING!!**

FOR USE WITH FUEL OIL, WATER OR OTHER APPROVED CLASS II OR NON-FLAMMABLE LIQUIDS

NOT FOR USE WITH GASOLINE OR ANY CLASS I LIQUID OR ANY LIQUID HAVING A FLASH POINT OF LESS THAN 100°F  
EXPLOSION/FIRE HAZARD  
NOT FOR USE IN A HAZARDOUS ENVIRONMENT



<b>SIMPLEX</b>		SPRINGFIELD, ILLINOIS
SCALE :	APPROVED BY :	DRAWN BY : RER
DATE : 08-10-10		REVISED :
LEVEL TRANSDUCER PICTORIAL		
STANDARD	DRAWING NUMBER 211994	

THE INFORMATION HEREON IS THE PROPERTY OF SIMPLEX, INC., AND/OR ITS SUBSIDIARIES. WITHOUT WRITTEN PERMISSION ANY COPYING, TRANSMITTAL TO OTHERS AND USE EXCEPT THAT FOR WHICH IT IS LOANED IS PROHIBITED. DESIGN SUBJECT TO CHANGE WITHOUT NOTICE.  
©2010 SIMPLEX, INC. ALL RIGHTS RESERVED.