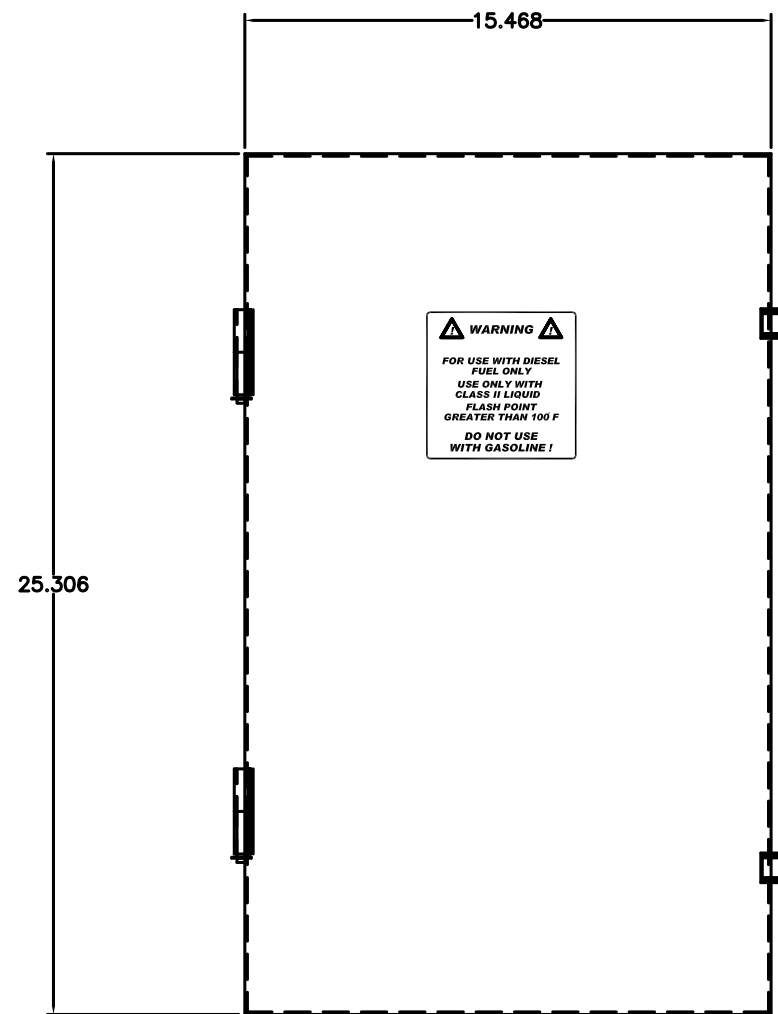
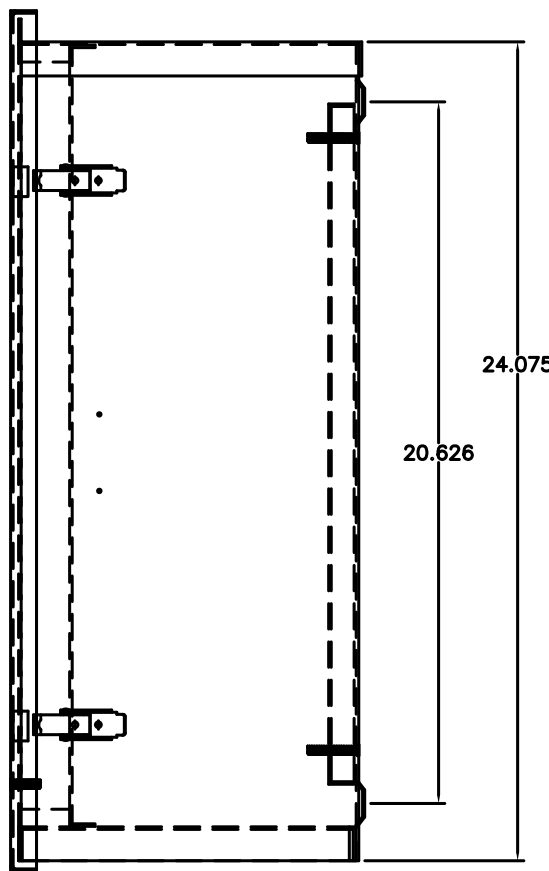


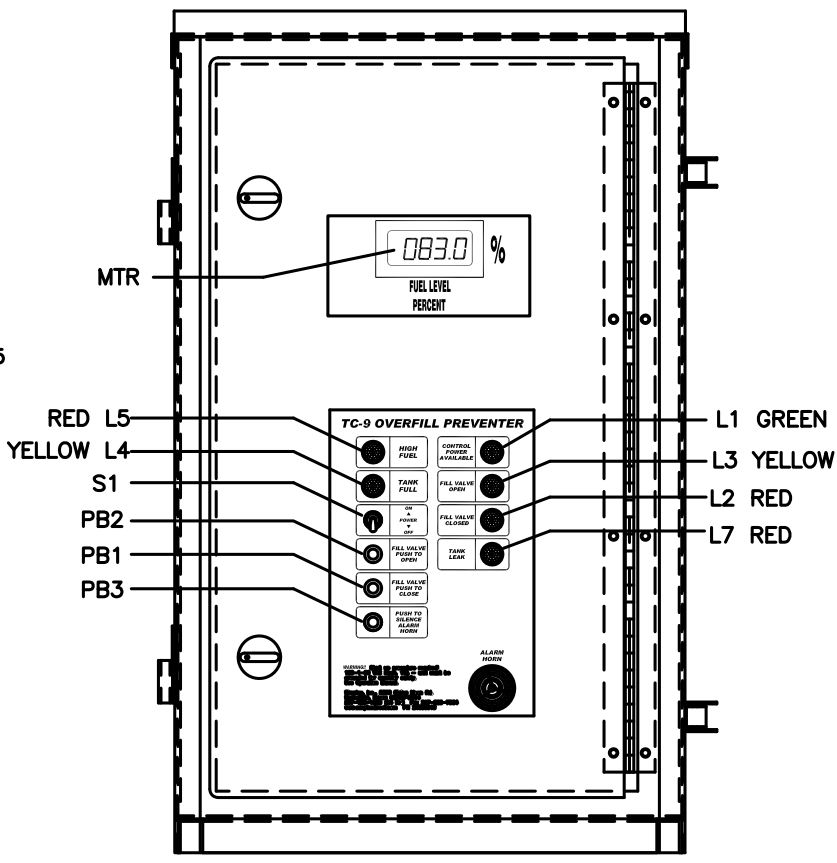
TOP VIEW



FRONT



RIGHT SIDE

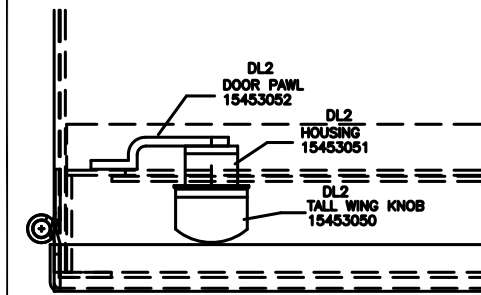


FRONT LESS OUTER DOOR

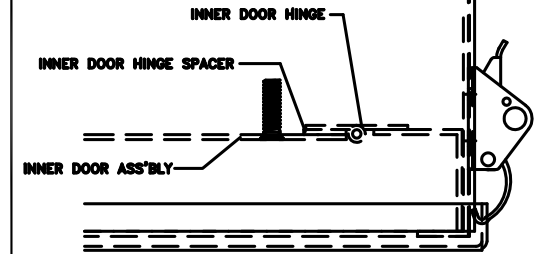
OUTER DOOR

- WS FOAM WEATHERSTRIPPING TOP ONLY 1/4x1.00x12.25 SIMPLEX PART # 21001001
- WS FOAM WEATHERSTRIPPING 1/4x1.00x16.375 (EACH SIDE) PART # 21001001

BACK SIDE DOOR DETAIL



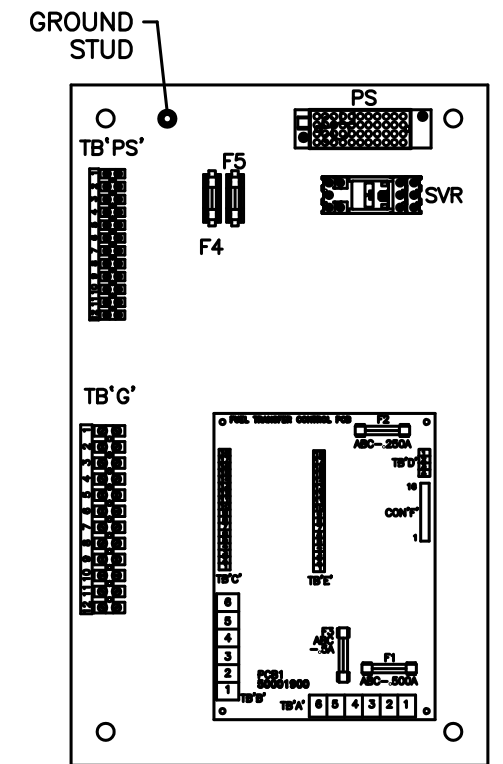
DETAIL A



DETAIL B

NOTES:

1. ENCLOSURE: TYPE 3R, 14 GA. STEEL; PAINTED: ASA 49 GRAY



SUBPANEL

THE INFORMATION HEREON IS THE PROPERTY OF SIMPLEX, INC., AND/OR ITS SUBSIDIARIES. WITHOUT WRITTEN PERMISSION ANY COPYING, TRANSMITTAL TO OTHERS AND USE EXCEPT THAT FOR WHICH IT IS LOANED IS PROHIBITED. DESIGN SUBJECT TO CHANGE WITHOUT NOTICE. ©2010 SIMPLEX, INC. ALL RIGHTS RESERVED.

SIMPLEX		SPRINGFIELD, ILLINOIS
SCALE :	APPROVED BY :	DRAWN BY : RER
DATE : 08-10-10		REVISED :
TC-9 PICTORIAL		
UL508A	STANDARD	DRAWING NUMBER 212476