

4

3

2

1

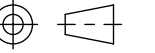
- NOTES: UNLESS OTHERWISE SPECIFIED
1. MATERIAL: SEE SCOPE OF SUPPLY IN SUBMITTAL FOR DETAILS
 2. COATING: SEE SCOPE OF SUPPLY IN SUBMITTAL FOR DETAILS
 3. UL: SPILL CONTAINMENT LISTED TO UL FILE MH17926

SIMPLEX

SIMPLEX, INC.
5300 RISING MOON ROAD
SPRINGFIELD, ILLINOIS 62711-6228

THE INFORMATION HEREON IS THE PROPERTY OF SIMPLEX, INC., AND/OR ITS SUBSIDIARIES. WITHOUT WRITTEN PERMISSION ANY COPYING, TRANSMITTAL TO OTHERS AND USE EXCEPT THAT FOR WHICH IT IS LOANED IS PROHIBITED.
©2014 SIMPLEX, INC.
ALL RIGHTS RESERVED

THIRD ANGLE PROJECTION



D

C

B

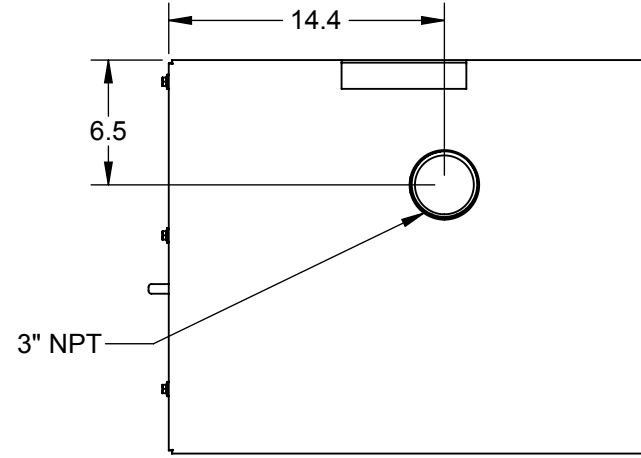
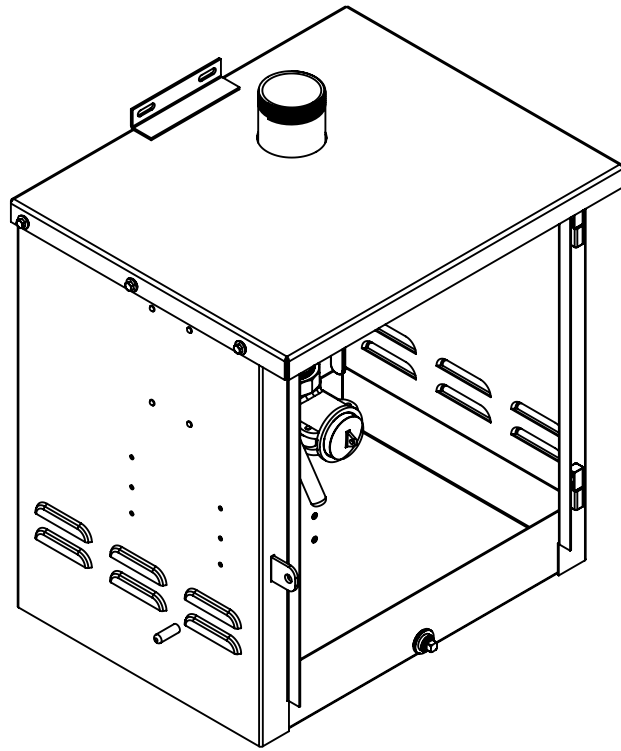
A

D

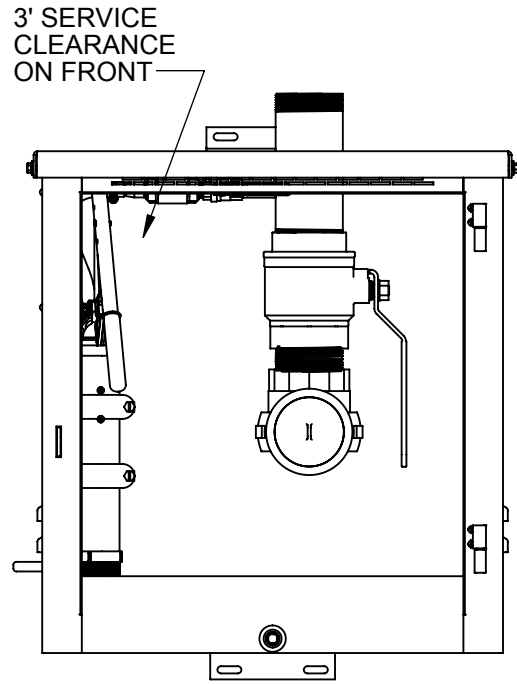
C

B

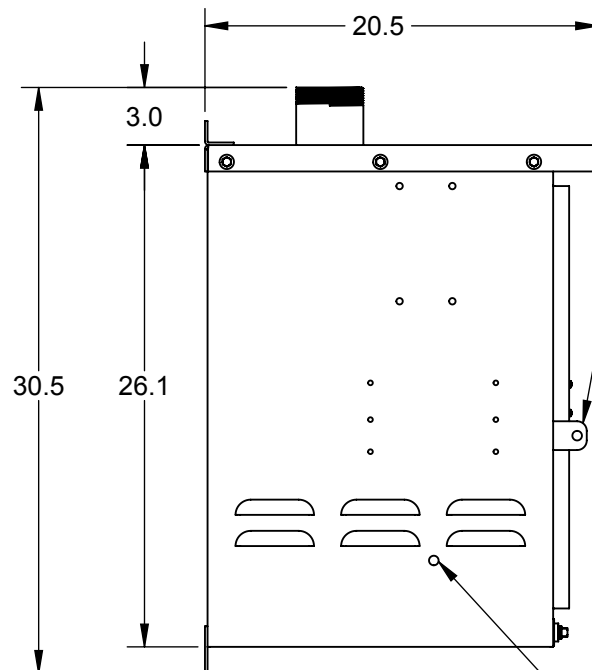
A



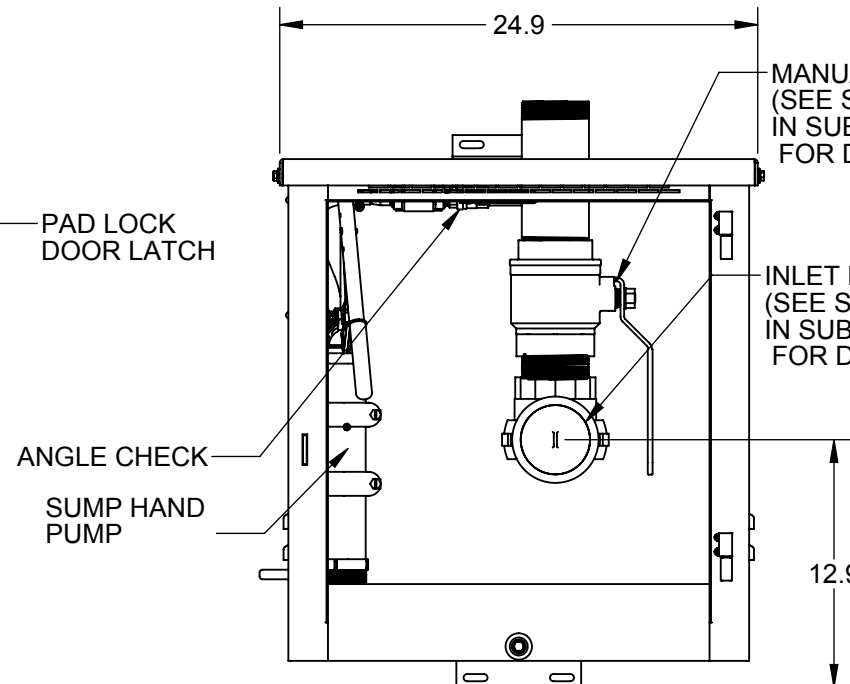
VIEW - TOP



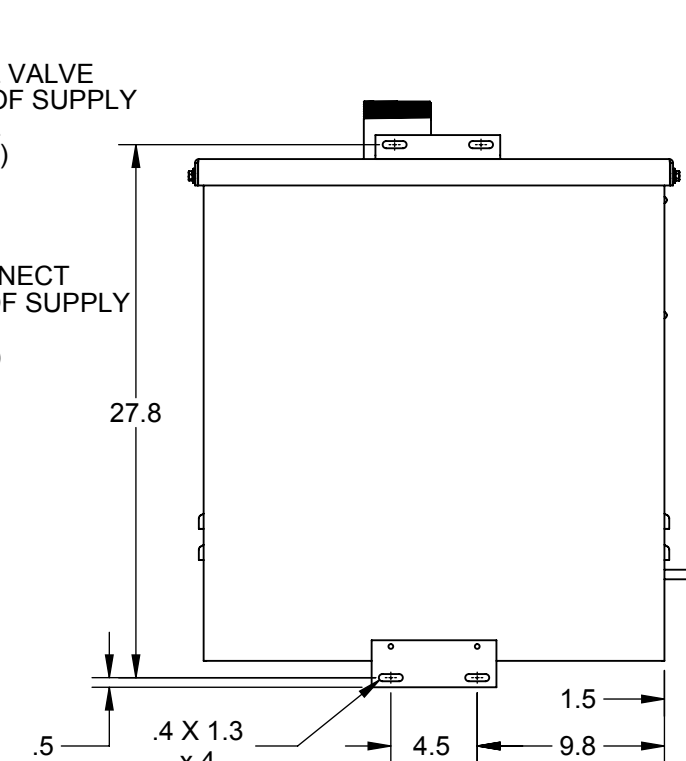
VIEW - FRONT



VIEW - LEFT



VIEW - FRONT (SANS DOORS)



3' SERVICE CLEARANCE ON FRONT

PAD LOCK DOOR LATCH

ANGLE CHECK

SUMP HAND PUMP

GROUND STUD

MANUAL BALL VALVE (SEE SCOPE OF SUPPLY IN SUBMITTAL FOR DETAILS)

INLET DISCONNECT (SEE SCOPE OF SUPPLY IN SUBMITTAL FOR DETAILS)

REVISIONS & UPDATES

REV	DATE	DESCRIPTION
F	04/02/2014	Edited scope of supply note
E	02/03/2014	Changed tolerances and decimal points
D	07/14/2014	Corrected notes and updated views
C	12/18/2013	Updated Notes and Dimensions
B	07/15/2013	Add Florida E.O. Option Note
A	05/22/2013	Drawn for submittal

Approved 04/02/2014

TOLERANCES
X.XXX ± 0.025"
X.XX ± 0.050"
X.X ± 0.100"
FRACTIONAL ± 1/16"
ANGLES ± 2.5°
SURFACES 125

APPROVED BY: PWC
DRAWN BY: MPC
SCALE: 1:10
SHEET SIZE: B-SIZE
SHEET TITLE: SUBMITTAL
W.O. #: NA
WEIGHT: 0.00 lbs

PROJECT
Compact Fuel Port

PART DESCRIPTION
3in Compact Fuel Port Assembly

PART NUMBER
ASM-00004927

PART REVISION: **F**

DRAWING NUMBER
DWG-00007828

SHEET NUMBER 1 / 1
REVISION **F**

