

Options

Dual voltage with reduced overall capacity:

- 240/480v
- 416/480v
- 480/600v
- 480/690v

Addition of capacitive load to 0.90 p.f. leading, with reduced overall capacity

Special use construction

- Marine
- Arctic

Highway trailer and trailer accessories

- Cable reels
- Power cable sets

Infinitely variable load control

Automation software

Windows PC control software

Remote control packages

- Suitcase controller
- Remote control cables/reels

Enclosure options

- Custom paint colors and markings
- Stainless steel construction



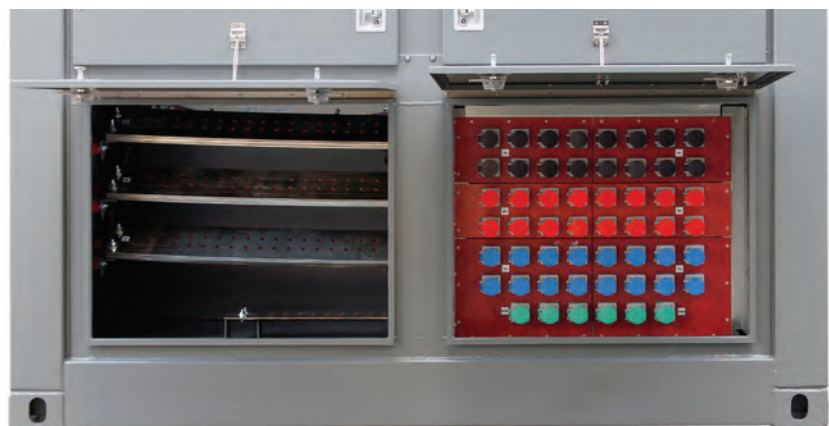
Solar-5 with all ventilation and service doors closed and ready for transport.



Purpose built enclosure insures ample interior space and service access. Shown above are readily accessible inductive elements.



The touchscreen operator interface mounted in a protective enclosure is removable for remote control.



Solar-5 is equipped with two means of power cable connection: copper bus bars for bolted connection of cables and Cam-Lock style connectors.

Digital Control and Data Acquisition System

PLC based digital control with 8-inch color TFT touchscreen operator interface.

Functions

- Control power source and voltage level detection
- Malfunction detection and protection
- Direct access (keypad) load control
- Alternate mimic panel load control
- Basic automation of load control
- Field adjustable exhaust temperature limits with temperature display
- Built-in control from customer supplied computer

Instrumentation

Digital power transducer to digital controller and meter displays on touchscreen:

- 3-phase voltage (each, L-L)
- 3-phase current (each line)
- Frequency
- KW
- KVAR
- Power-factor

Data Acquisition

- Captures and records all electrical values
- Start recording/stop recording screen buttons
- One second sample rate
- Exports text file to detachable flash drive which plugs into USB port

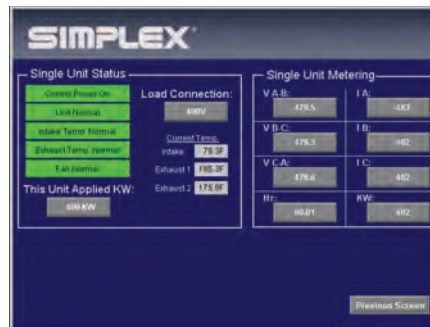
Outputs

MODBUS (standard) or BacNet (optional):

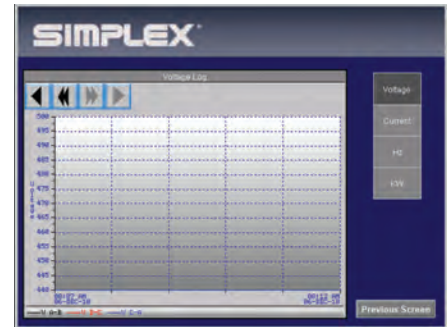
- Load applied
- Each electrical value as above



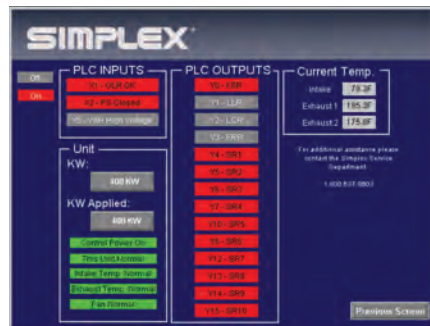
Main Screen



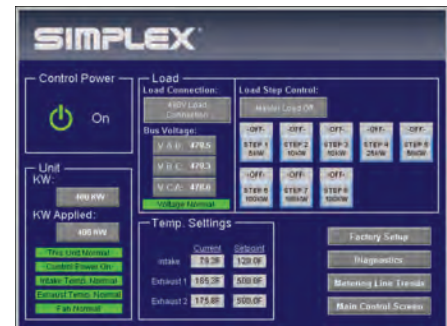
Monitoring Screen



Metering Trends Screen



Diagnostics Screen



Maintenance Screen