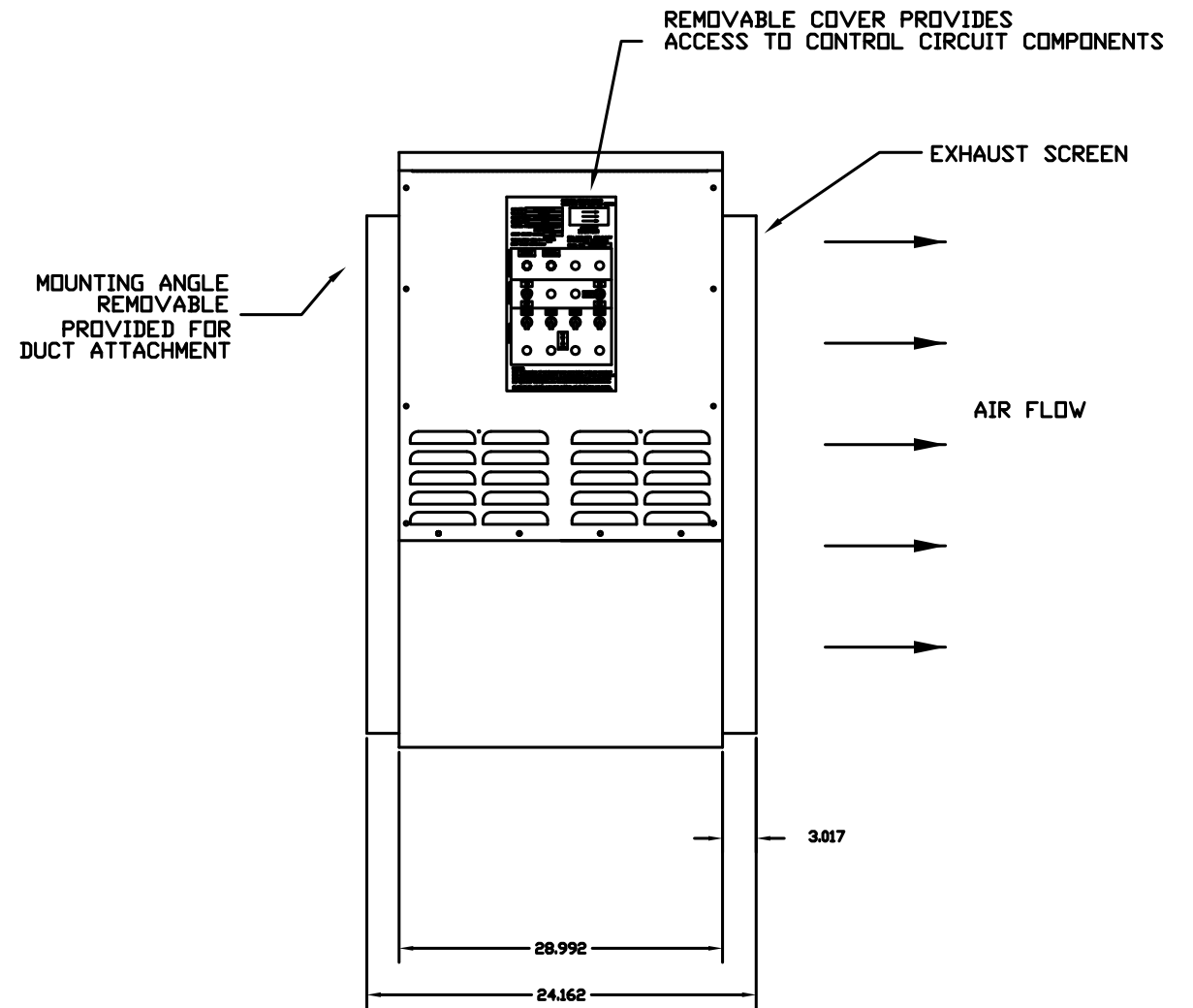
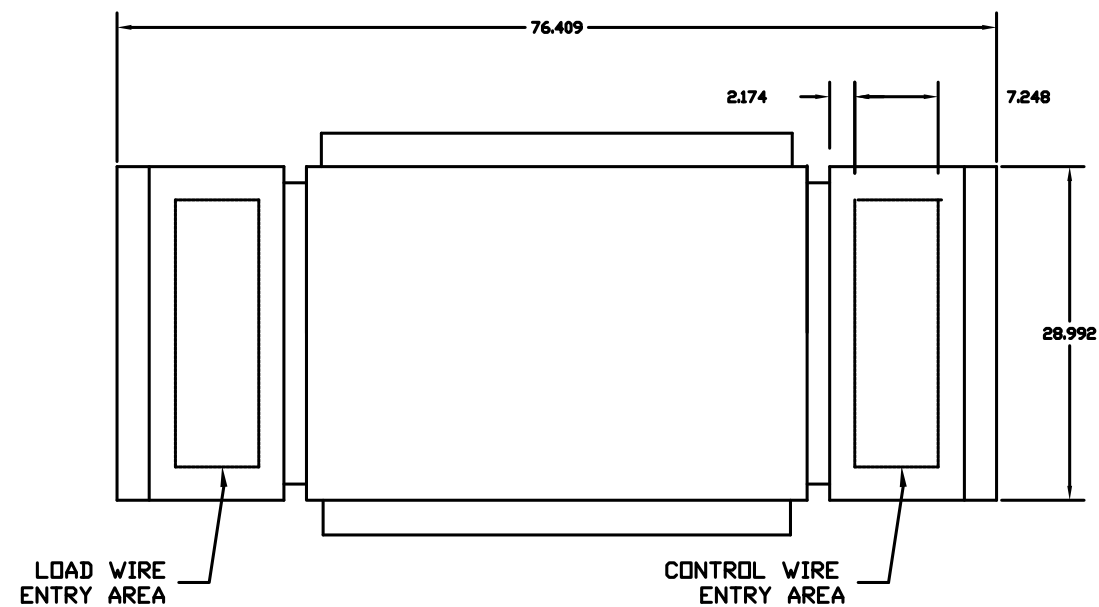


(VIEW SHOWN LESS EXHAUST SCREEN)



THIS IS A SAMPLE DRAWING ONLY. THE DIMENSIONS OF THE LOAD BANK ARE DEPENDENT ON CUSTOMER PROVIDED SPECIFICATIONS.

NOTES:

- 1) CONTROL & ELEMENT BOX
MATERIAL - 14 GA. GALV.
- 2) DUCT FRAME MATERIAL - 12 GA. GALV.
- 3) CONDUIT - 2" ALUMINUM TUBING
- 4) ENVIRONMENTAL TYPE 1.
- 5) LOAD ELEMENTS: 24307510 - 3333W @ 240V (TYP OF 3)
24325558 - 6667W @ 240V (TYP OF 12)

THE INFORMATION HEREON IS THE PROPERTY OF SIMPLEX, INC., AND/OR ITS SUBSIDIARIES. WITHOUT WRITTEN PERMISSION ANY COPYING, TRANSMITTAL TO OTHERS AND USE EXCEPT THAT FOR WHICH IT IS LOANED IS PROHIBITED. DESIGN SUBJECT TO CHANGE WITHOUT NOTICE.
©2011 SIMPLEX, INC. ALL RIGHTS RESERVED.

SIMPLEX			SPRINGFIELD, ILLINOIS
SCALE :	APPROVED BY :	DRAWN BY : RER	
DATE : 05-08-11		REVISED :	
LBD (BOLT-TOGETHER DESIGN) RESISTIVE LOAD BANK PICTORIAL			
SAMPLE ONLY			DRAWING NUMBER 217958