

4

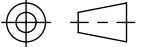
3

2

1

**SIMPLEX**SIMPLEX, INC.  
5300 RISING MOON ROAD  
SPRINGFIELD, ILLINOIS 62711-6228THE INFORMATION HEREON IS THE  
PROPERTY OF SIMPLEX, INC., AND/OR  
ITS SUBSIDIARIES. WITHOUT WRITTEN  
PERMISSION ANY COPYING,  
TRANSMITTAL TO OTHERS AND USE  
EXCEPT THAT FOR WHICH IT IS  
LOANED IS PROHIBITED.  
©2014 SIMPLEX, INC.  
ALL RIGHTS RESERVED

THIRD ANGLE PROJECTION



REVISIONS &amp; UPDATES

REV	DATE	DESCRIPTION	APPR
A	07/01/2014	APPROVED FOR SUBMITTAL	SB
			PWC

Approved 07/01/2014

**TOLERANCES**  
 X.XXX ± 0.025"  
 X.XX ± 0.050"  
 X.X ± 0.100"  
 FRACTIONAL ± 1/16"  
 ANGLES ± 2.5°  
 SURFACES 125/

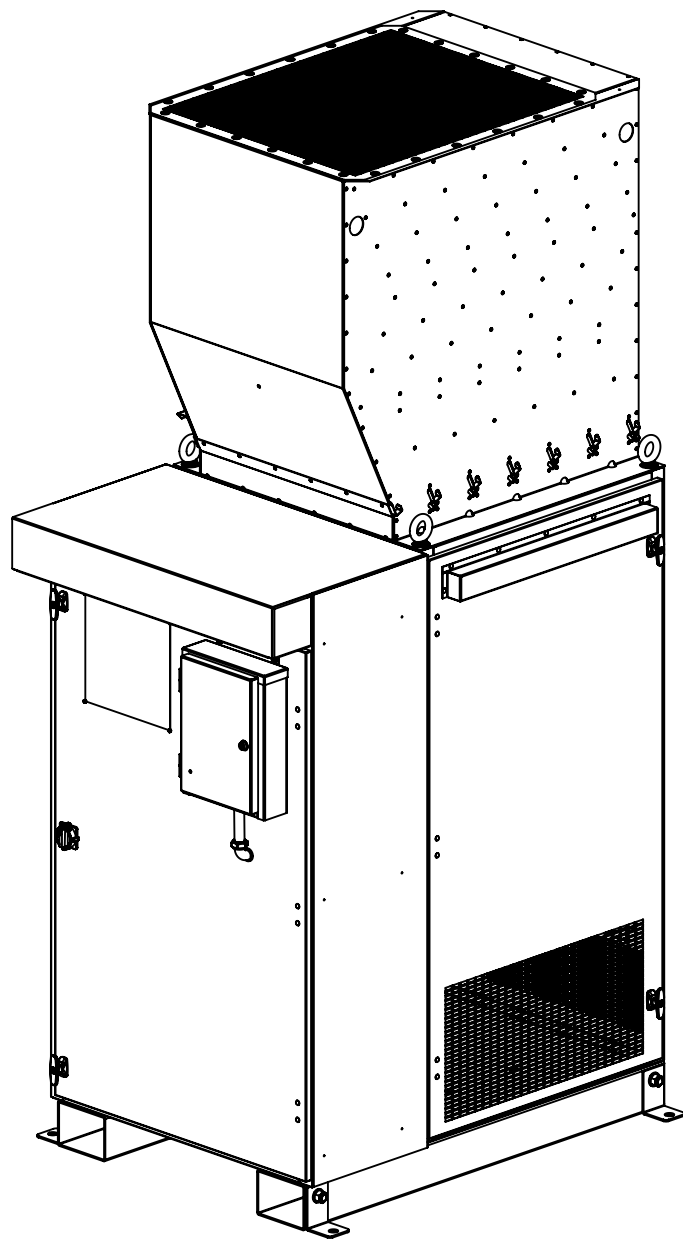
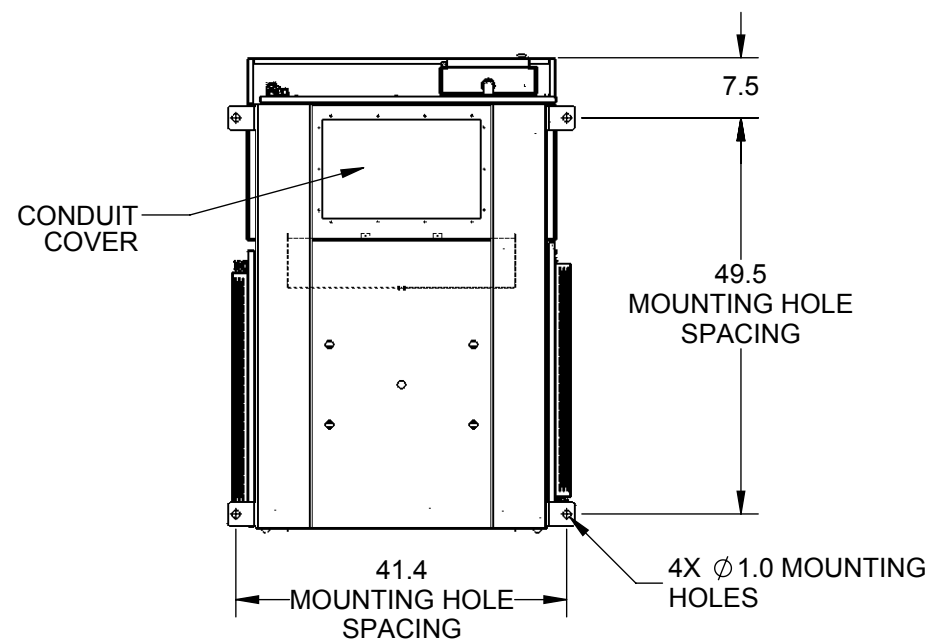
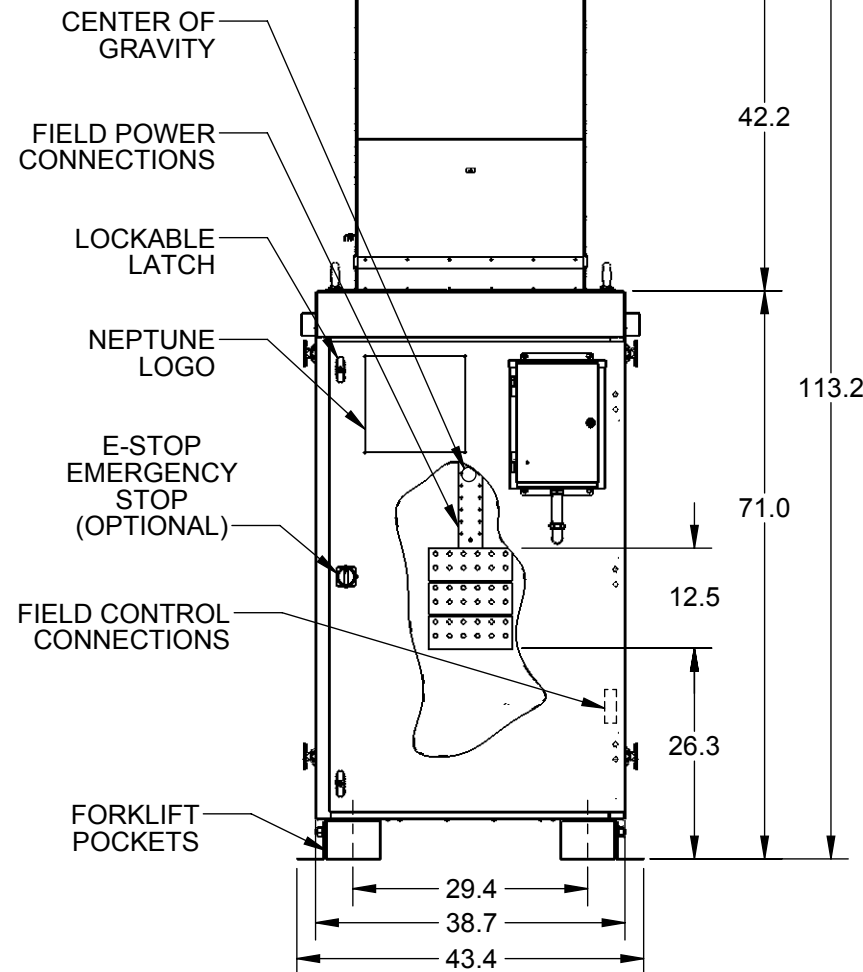
APPROVED BY:	PWC
DRAWN BY:	SB
SCALE:	1:24
SHEET SIZE:	B-SIZE
SHEET TITLE:	Sheet 1
W.O. #:	NA
WEIGHT:	1288.86 lbs

**PROJECT**

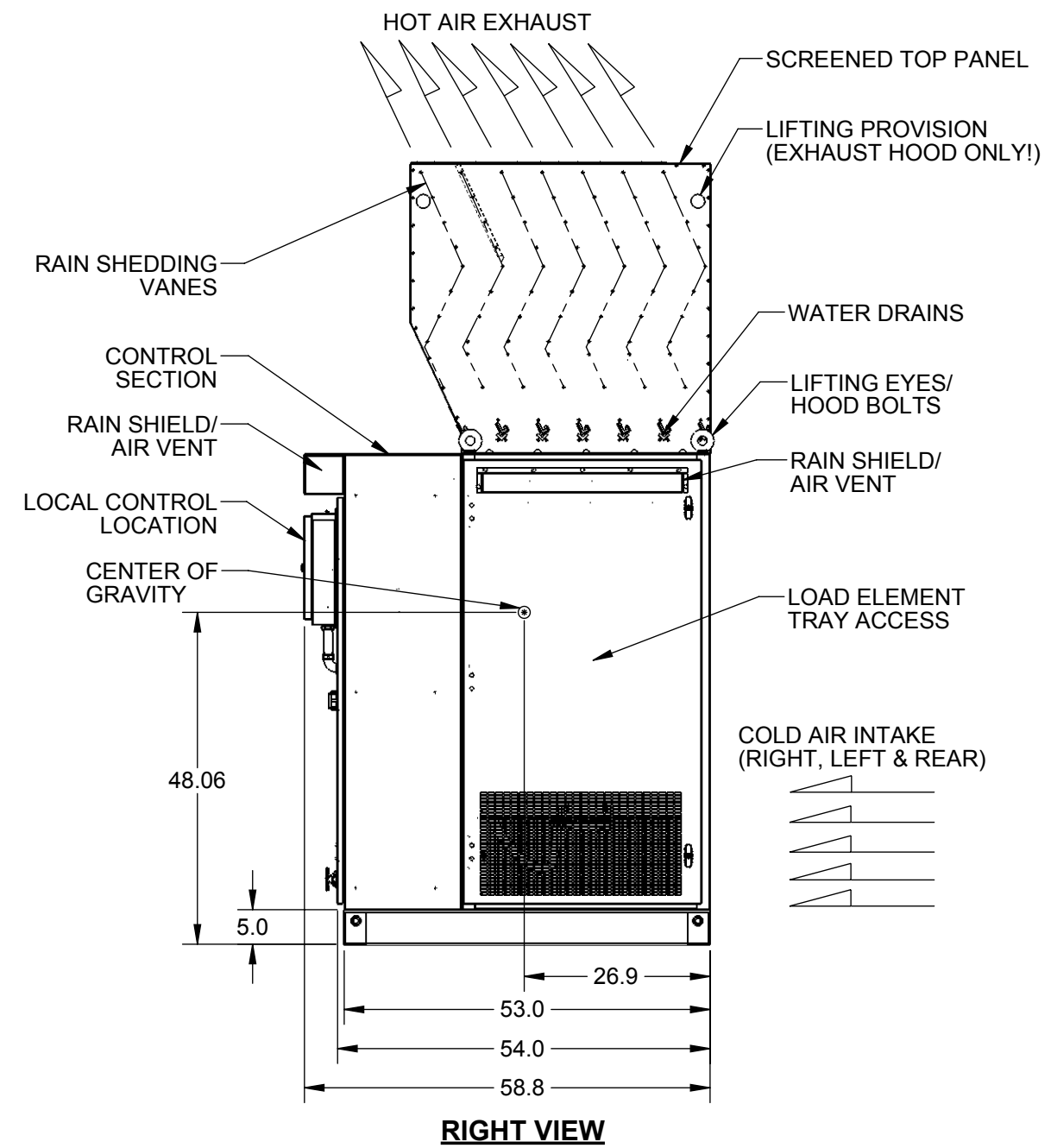
Neptune

**PART DESCRIPTION**Assembly Neptune - Local  
Pictorial**PART NUMBER****ASM-00011915****PART REVISION: B****DRAWING NUMBER****DWG-00016721**

<b>SHEET NUMBER</b>	<b>REVISION</b>
1 / 1	A

ISOMETRIC VIEW  
ENG REF ONLYNOTES:  
(UNLESS OTHERWISE SPECIFIED)

1. ENVIRONMENTAL TYPE - 3R UL APPROVED.
2. FINISH - UL POWDER COAT DARK GRAY CABINETS & HIGH-TEMP BLACK HOOD.
3. CONSTRUCTION: ALL WELDED, FORMED, STEEL FRAME, DOORS, PANELS, AND FORKLIFT TUBES.
4. AIR FLOW - 12,000 CFM
5. MAX INLET TEMP: 125°F
6. MAX  $\Delta T$ : 150°F
7. MAX EXHAUST TEMP: 600°F
8. APPROXIMATE WEIGHT - 1290 LBS, 940 CABINET & 350 EXHAUST HOOD.



4

3

2

1