

FUEL ASSEMBLY PARTS (FS Assy-OPERATION 10)

ITEM	DESCRIPTION	PART NUMBER	QTY.
1B AC	2.00" ANGLE CHECK ELBOW COUPLER, FEMALE NPT. THREAD x COUPLER, ALUMINUM BODY W/ VITON SEAL, PART G		1
2B DP1	DUST PLUG ADAPTER FOR 2.00" COUPLER, ALUMINUM, PART W		1
3B N1	2.00"x6.00" NPT. NIPPLE, SCH. 40, 304 STAINLESS STEEL, TBE		1
4B MHP	MANUAL HAND PUMP, STEEL BODY W/ ALUMINUM HEAD & BASE 1-GAL. PER 9 STROKES DELIVERY RATE		1
5B BV2	2.00" NPT. MANUAL BALL VALVE, FULL PORT, BRASS/BRONZE BODY		1

AVAILABLE PARTS (REFERENCE SALES ORDER FOR OPTIONS)

FUEL ASSEMBLY PARTS (FLOOR STOCK)

ITEM	DESCRIPTION	PART NUMBER	QTY.	OPTION
13 WHP	WEATHERPROOF HOLD PLUG W/ GASKET, TYPE 4X, FOR 0.75" HOLE	17111150	1	
14 RC	3.00"x2.00" REDUCING COUPLER x ADAPTER, 3.00" PART D COUPLER x 2.00" ADAPTER, ALUMINUM BODY W/ VITON GASKET	60000190	1	FSOP-040
14 DP	DUST PLUG ADAPTER FOR 3.00" COUPLER, ALUMINUM, PART W	22440904	1	
15 DL	DIESEL LABEL, 6"x3"H, GREEN/WHITE	24138005	1	FSOP-041
16 GL	GAS LABEL, 6"x3"H, RED/WHITE	24138000	1	FSOP-042
17 EQ	FLORIDA EQ-481 SPILL CONTAINMENT LABEL, 5.25"Lx2.5"H, WHITE/BLACK	24055213	1	FSOP-043

FP-2 COMPACT FUEL PORT 2" (PN. 50002627)

CUSTOMER DRAWING

STD. FILLING SYSTEM DRAWING
 NON-STD. FILLING SYSTEM DRAWING

NOTES

- 1) ALL DIMENSIONS ±.125
- 2) DUE TO SYSTEM COMPLEXITY SOME COMPONENTS MAY NOT BE VISIBLE IN ALL VIEWS
- 3) CONSTRUCTION WELDED 14 GA. H.R.S.
- 4) CABINET COLOR: **WHITE** DOOR COLOR: **BLUE**
- 5) APPROXIMATE WEIGHT: 125lbs.

REFERENCE ASSEMBLY (FOR SIMPLEX USE ONLY)

ITEM	DESCRIPTION	PART NUMBER	QTY.
1A	CFB-2 COMPACT FILL BASE WELDMENT ASSEMBLY	ACD-00053535C	1

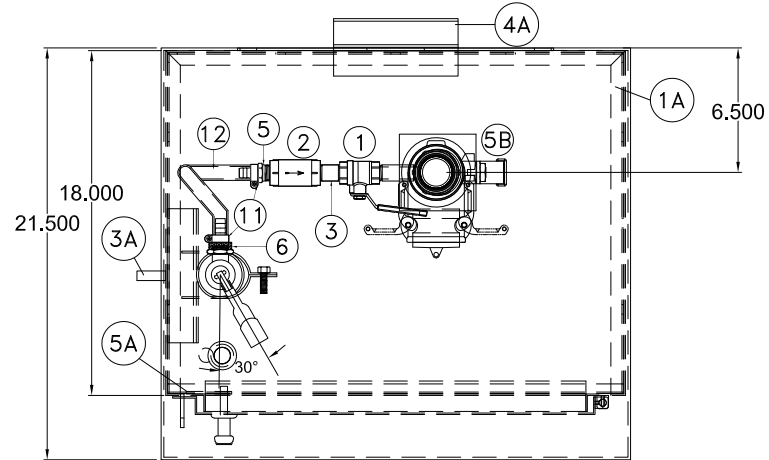
FABRICATED PARTS (Weld-OPERATION 10)

ITEM	DESCRIPTION	PART NUMBER	QTY.
2A	COMPACT FILL BASE PADLOCK SLOT/TAB, 7GA. H.R.S.		1
3A	COMPACT FILL BASE STAINLESS STEEL GROUND STUD		1
4A	COMPACT FILL BASE WALL MOUNTING CHANNEL BRACKET (SHIP LOOSE)		2
5A	COMPACT FILL BASE DOOR PAWL, 2.375", GALVANIZED		1

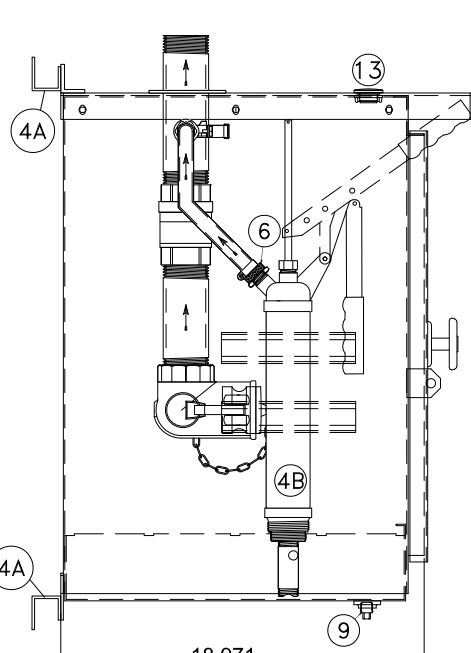
FUEL ASSEMBLY PARTS (FLOOR STOCK)

ITEM	DESCRIPTION	PART NUMBER	QTY.
1 BV1	0.50" NPT. MANUAL BALL VALVE, FULL PORT, BRASS/BRONZE BODY		1
2 CV	0.50" NPT. CHECK VALVE, SPRING TYPE, BRONZE W/ VITON O-RING		1
3 NP2	0.50"x1.50" NPT. NIPPLE, SCH. 40, 304 STAINLESS STEEL, TBE		1
4 NP3	0.75"x3.00" NPT. NIPPLE, SCH. 40, 304 STAINLESS STEEL, TBE		1
5 HB1	HOSE BARB 0.50" ID BARB x 0.50" NPT. MALE THREADS, BRASS		1
6 HB2	HOSE BARB 0.50" ID BARB x GHT FEMALE THREADS, BRASS		1
7 DLN	DOOR LATCH, NON-LOCKING T-HANDLE, BLACK W/ GASKET		1
8 DH	DOOR HINGE 2-1/4"x19/32" #10 W/ UL GREEN SEALING WASHERS		2
9 SP	SUMP PLUG, 0.375" NPT. HEX HEAD, 316 STAINLESS STEEL		1
10 PC1	2.00" PIPE CLAMP, GALVANIZED FOR MOUNTING MANUAL HAND PUMP		2
11 HC	HOSE CLAMP W/ STAINLESS STEEL BAND		2
12 H	PCV CLEAR BRAIDED HOSE, 0.50" I.D. x 0.75" O.D.		-

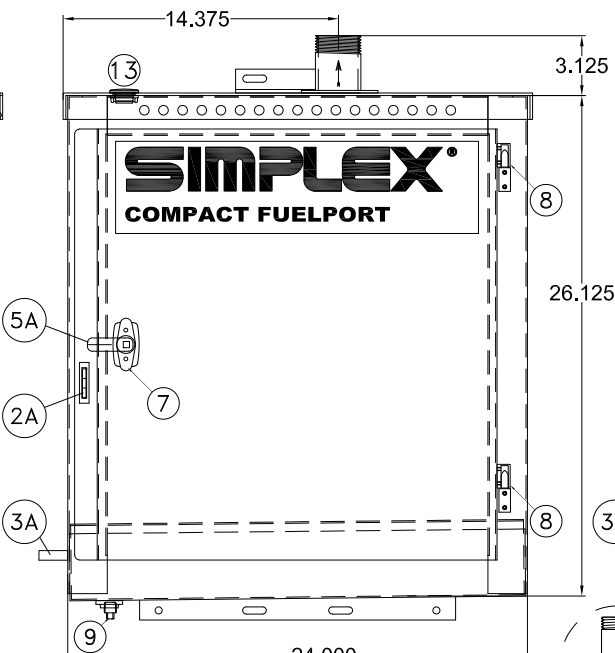
- DIESEL** 15
- GAS** 16
- Florida EQ-481** 17



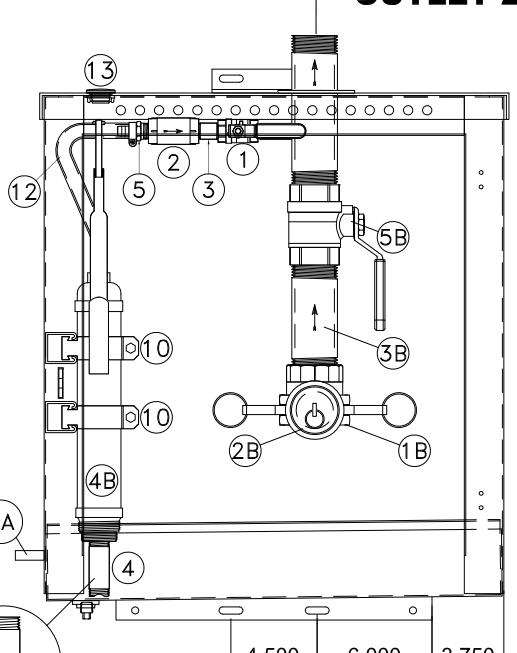
TOP VIEW



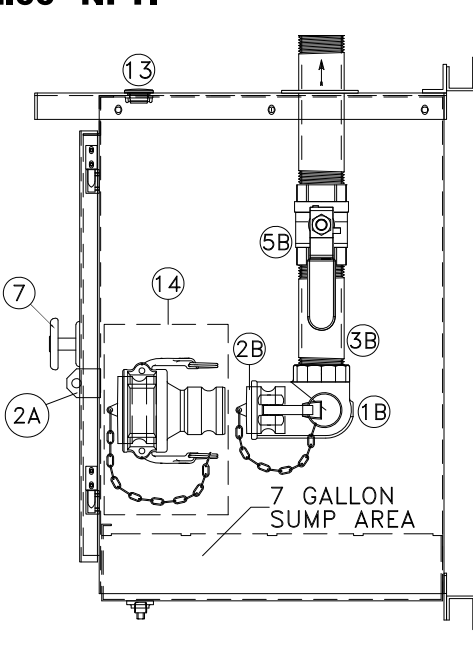
LEFT SIDE VIEW



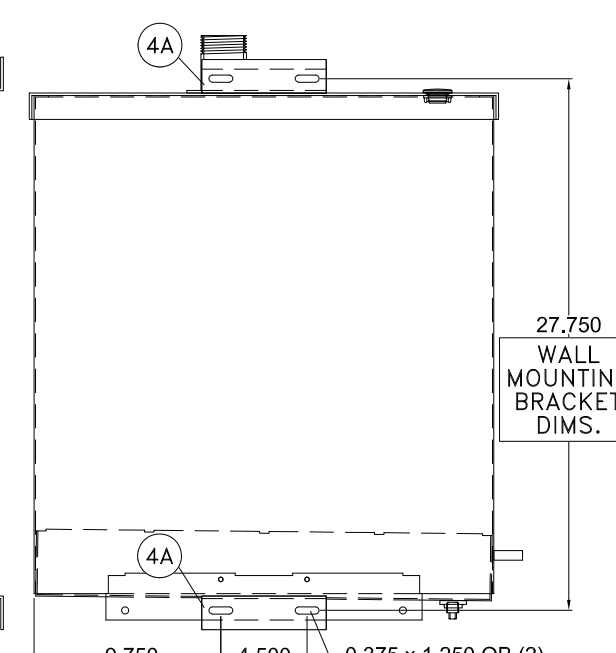
FRONT VIEW



FRONT VIEW LESS DOOR



RIGHT SIDE VIEW



REAR VIEW

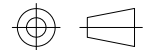
OUTLET 2.00" NPT.



SIMPLEX, INC. 5300 RISING MOON ROAD SPRINGFIELD, ILLINOIS 62711-6228

THE INFORMATION HEREON IS THE PROPERTY OF SIMPLEX, INC. AND/OR ITS SUBSIDIARIES. WITHOUT WRITTEN PERMISSION ANY COPYING, TRANSMITTAL TO OTHERS AND USE EXCEPT THAT FOR WHICH IT IS LOANED IS PROHIBITED. © 2019 SIMPLEX, INC. ALL RIGHTS RESERVED.

THIRD ANGLE PROJECTION



REV	DATE	DESCRIPTION
B	09/05/2019	UPDATED NUMBERING & DOOR HOLES
A	08/01/2019	ORIGINAL DESIGN

TOLERANCES
 X.XXX ± 0.005"
 X.XX ± 0.010"
 X.X ± 0.020"
 FRACTIONAL ± 1/32"
 ANGLES ± 1°
 SURFACES 125

APPROVED BY: AA
 DRAWN BY: AA
 SCALE: 1:9.8716
 SHEET SIZE: ANSI B
 JOB NUMBER: NA

DESCRIPTION
 COMPACT FUEL PORT
 FP-2 PICTORIAL
 (PN. 50002627)

Approved 09/05/2019

DRAWING NUMBER
ACD-00060595

SHEET NUMBER 1/1
 REVISION B